



Principal Particulars

Length overall	25.3	metres
Length waterline	23.9	metres
Moulded beam	8.5	metres
Design draught	1.8	metres

Deadweight

Technicians	12	
Crew	3	
Cargo	10	tonnes
Fuel	8,400	litres
Fresh water	600	litres
Black water	600	litres
Maximum deadweight	22.3	tonnes

Performance & Range

Speed	27.5	knots
-------	------	-------

Machinery

Main engines	2 x MTU 12V2000M72 (1080 kW)	
Propulsors	2 x MJP 550DRB Waterjets	

Construction

Aluminium

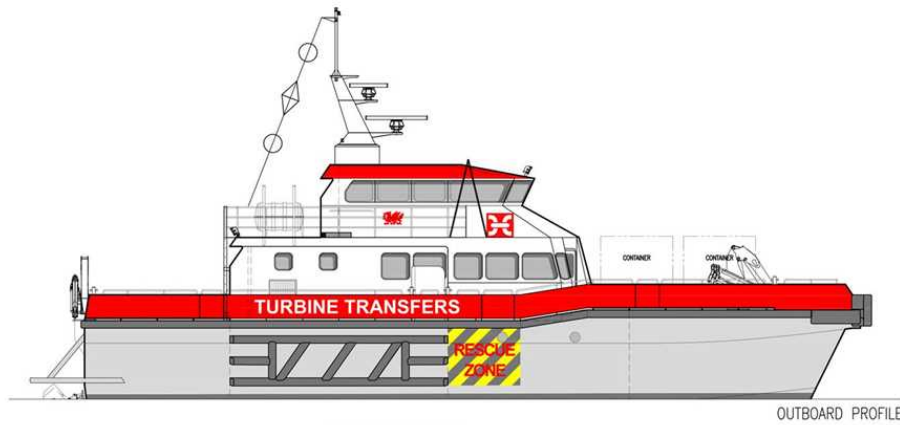
Design Standard

Class DNV 1A1 HSLC R2 Windfarm Service 1
BV Hull •Mach "Wind Farm Service Ship
-S1" sea area 3

Flag MCA Workboat Code CAT1



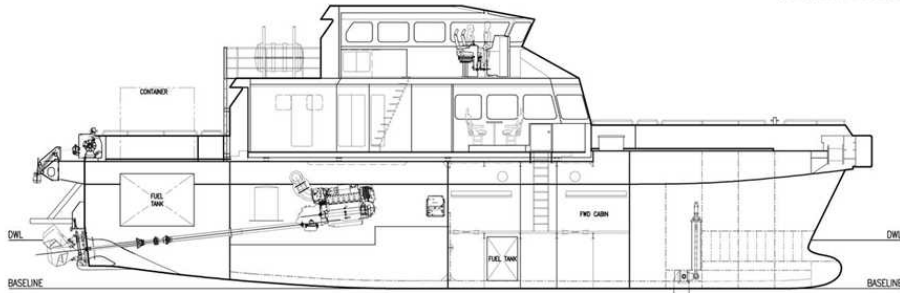
Year launched	Number built	Owner	Project No	Builder
2012/2014	2	Turbine Transfers	NG806	Sepers BV / Neptune



OUTBOARD PROFILE

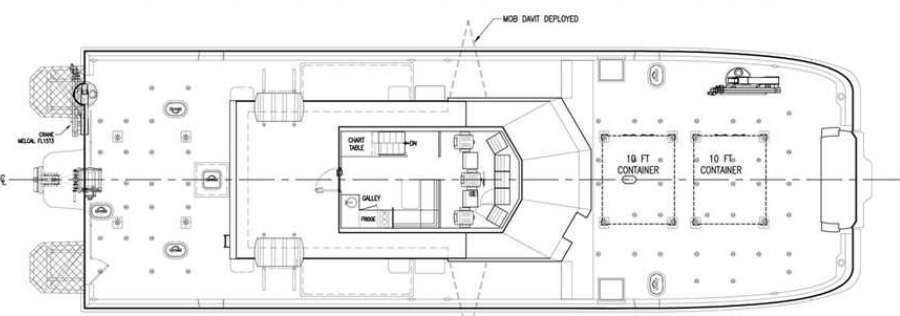


FRONT VIEW



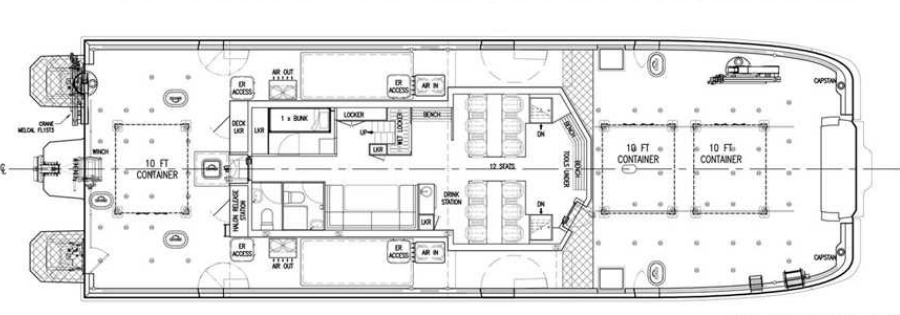
INBOARD PROFILE

TRANSOM	WTB										NON-WTB	WTB									
FR.0	FR.1	FR.2	FR.3	FR.4	FR.5	FR.6	FR.7	FR.8	FR.9	FR.10	FR.11	FR.12	FR.13	FR.14	FR.15	FR.16	FR.17	FR.18	FR.19	FR.20	FR.21
1200	2400	3600	4800	6000	7200	8400	9600	10800	12000	13200	14400	15600	16800	18000	19200	20400	21600	22800	24000	25200	



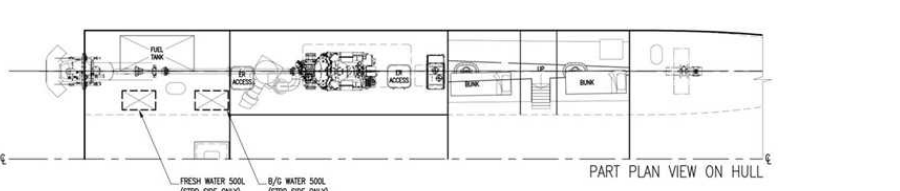
PLAN VIEW BRIDGE

TRANSOM	WTB										NON-WTB	WTB									
FR.0	FR.1	FR.2	FR.3	FR.4	FR.5	FR.6	FR.7	FR.8	FR.9	FR.10	FR.11	FR.12	FR.13	FR.14	FR.15	FR.16	FR.17	FR.18	FR.19	FR.20	FR.21
1200	2400	3600	4800	6000	7200	8400	9600	10800	12000	13200	14400	15600	16800	18000	19200	20400	21600	22800	24000	25200	



PLAN VIEW ON MAIN DECK

TRANSOM	WTB										NON-WTB	WTB									
FR.0	FR.1	FR.2	FR.3	FR.4	FR.5	FR.6	FR.7	FR.8	FR.9	FR.10	FR.11	FR.12	FR.13	FR.14	FR.15	FR.16	FR.17	FR.18	FR.19	FR.20	FR.21
1200	2400	3600	4800	6000	7200	8400	9600	10800	12000	13200	14400	15600	16800	18000	19200	20400	21600	22800	24000	25200	



PART PLAN VIEW ON HULL