

# 45m High Speed Pax Ferry



## Principal Particulars

Length overall	45.6	metres
Length waterline	40.2	metres
Moulded beam	11.8	metres
Design draught	1.5	metres

## Deadweight

Passengers	296	
Crew	5	
Fuel	24,000	litres
Fresh water	1,510	litres
Maximum deadweight	39	tonnes

## Performance & Range

Speed	57	knots
Service speed	53	knots

## Machinery

Main engines	2 x TF80 Gas Turbines @ 5810 kW
Propulsors	2 x MJP 950

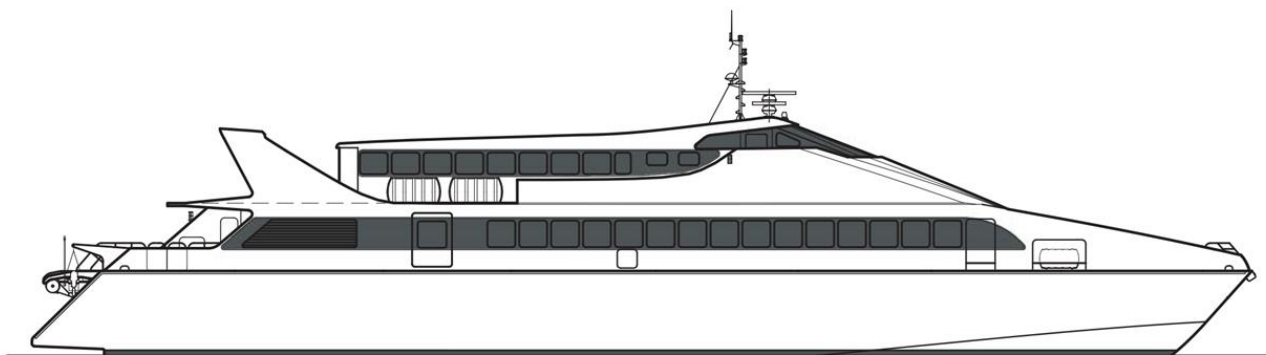
## Construction

Aluminium

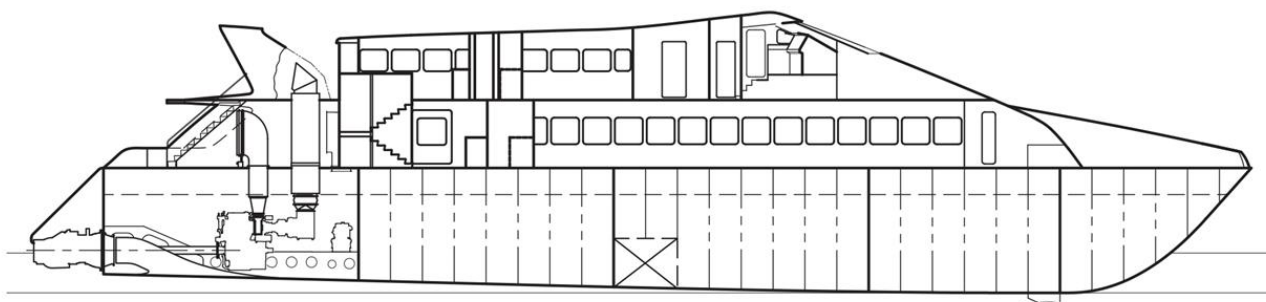
## Design Standard

Class	American Bureau of Shipping, USCG
Flag	USCG

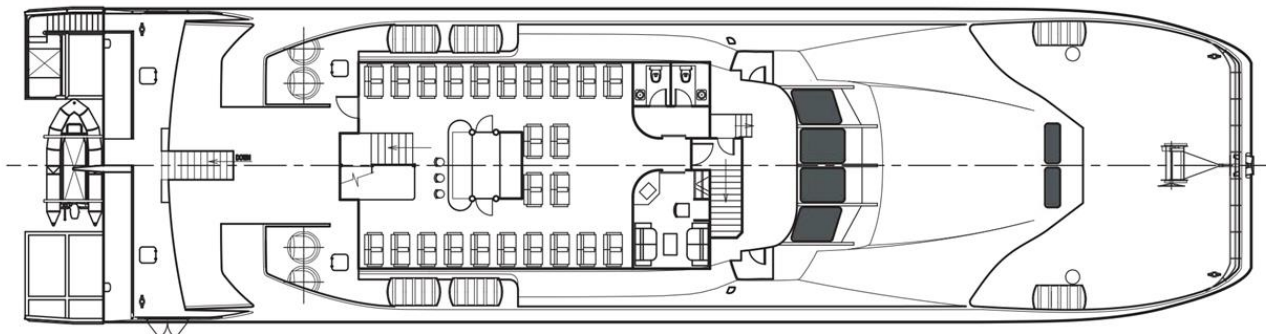




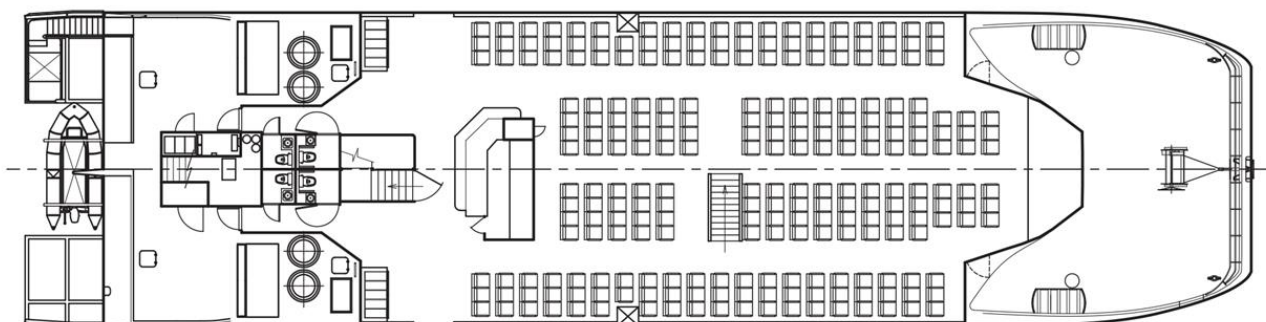
**Outboard Profile**



**Inboard Profile**



**Upper Deck Plan**



**Lower Deck Plan**