



## Principal Particulars

|                  |     |        |
|------------------|-----|--------|
| Length overall   | 26  | metres |
| Length waterline | 25  | metres |
| Moulded beam     | 7.1 | metres |
| Design draught   | 1.3 | metres |

## Deadweight

|                    |       |        |
|--------------------|-------|--------|
| Passengers         | 12    |        |
| Crew               | 3     |        |
| Fuel               | 5,675 | litres |
| Fresh water        | 1,000 | litres |
| Maximum deadweight | 43    | tonnes |

## Performance & Range

|               |    |       |
|---------------|----|-------|
| Speed         | 13 | knots |
| Service speed | 12 | knots |

## Machinery

|              |                                 |
|--------------|---------------------------------|
| Main engines | 2 x Detroit Diesel S60 @ 280 kW |
| Propulsors   | 2 x 36" Fixed Pitch Propeller   |

## Construction

Aluminium

## Design Standard

|       |                   |
|-------|-------------------|
| Class | USCG Subchapter T |
| Flag  | USCG              |



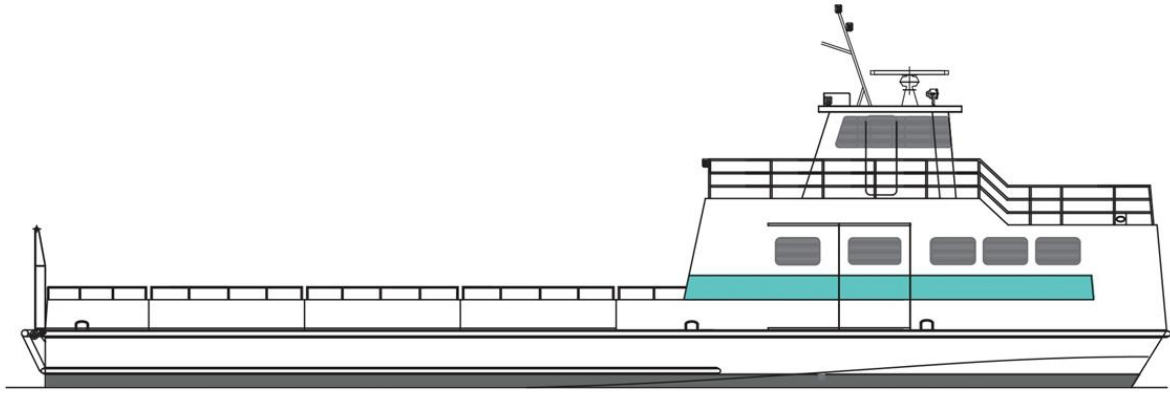
Year launched  
2002

Number built  
1

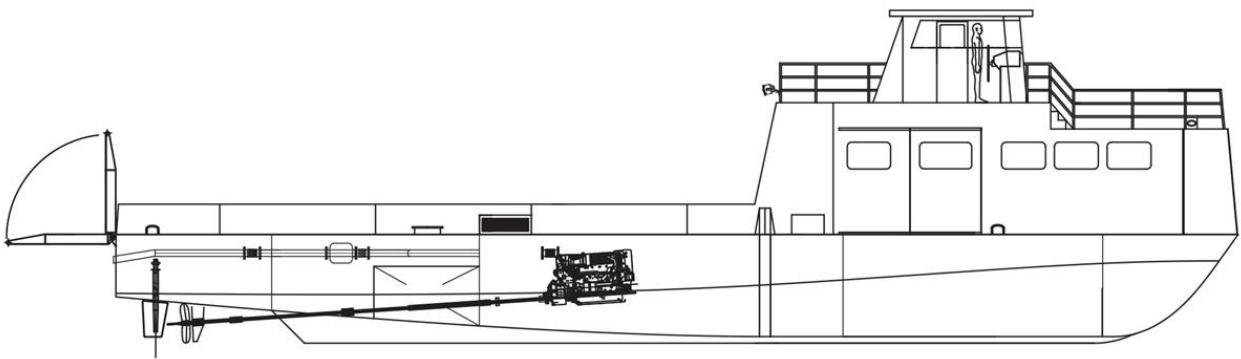
Owner  
Fire Island

Project No  
NG397

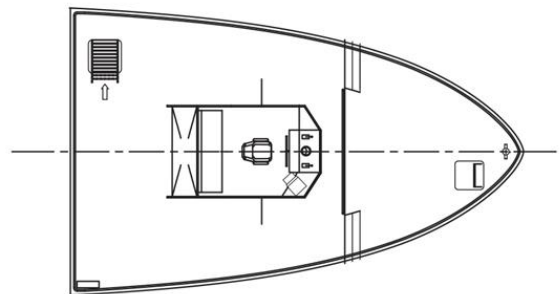
Builder  
Derecktor Shipyards



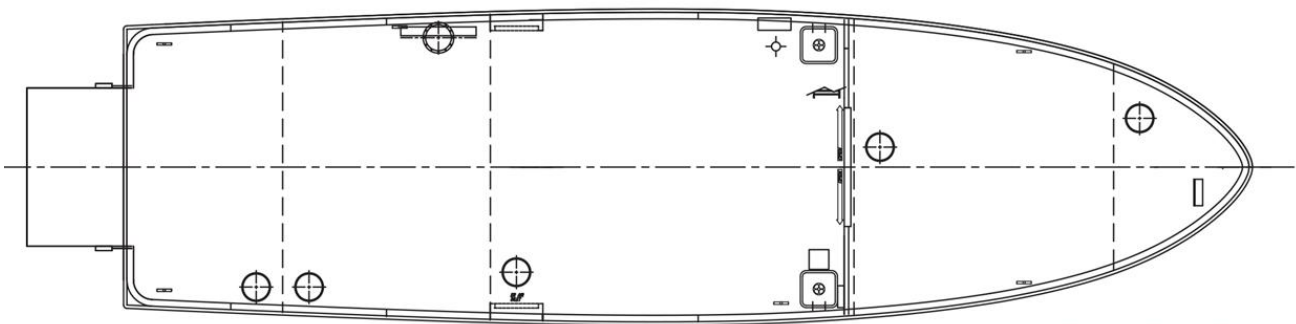
**Outboard Profile**



**Inboard Profile**



**Wheelhouse Deck Plan**



**Cargo Deck Plan**