



## Principal Particulars

Length overall	31.2	metres
Length waterline	30.5	metres
Moulded beam	7.5	metres
Design draught	1.3	metres

## Deadweight

Passengers	130	
Vehicles (bicycles)	60	
Crew	2	
Fuel	1,700	litres
Fresh water	200	litres
Black water	200	litres
Maximum deadweight	13.3	tonnes

## Performance & Range

Speed	24	knots
Service speed	22	knots

## Machinery

Main engines	2 x CAT 3196
Propulsors	2 x Fixed Pitch Popellers

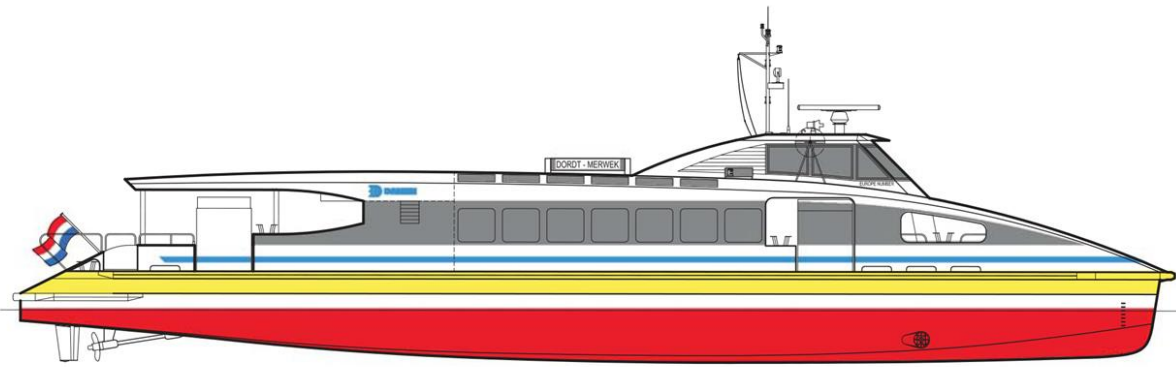
## Construction

Aluminium

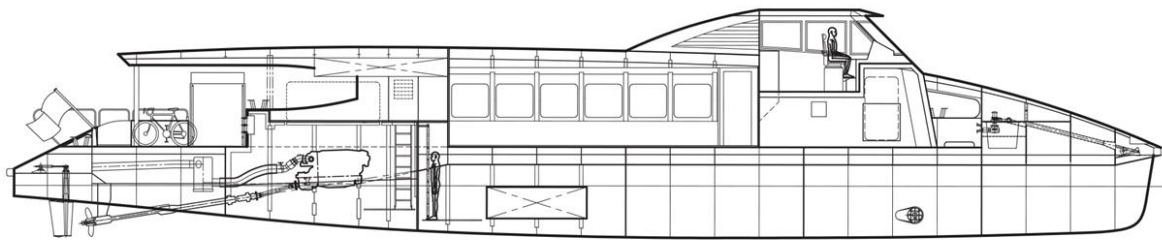
## Design Standard

Class	Bureau Veritas, Dutch Shipping Inspectorate
-------	--

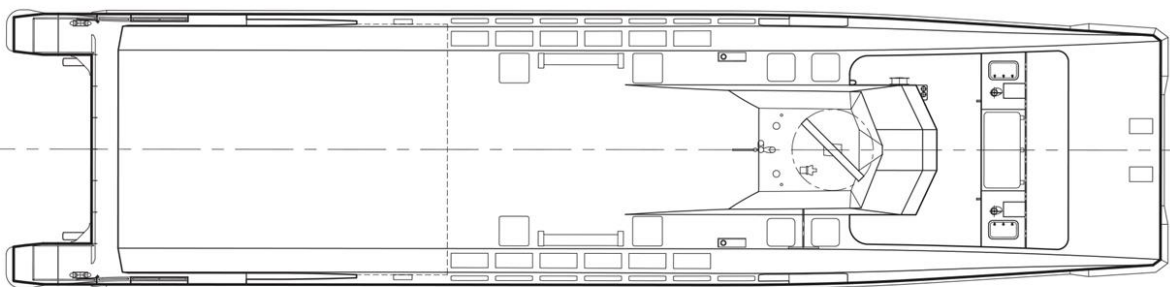




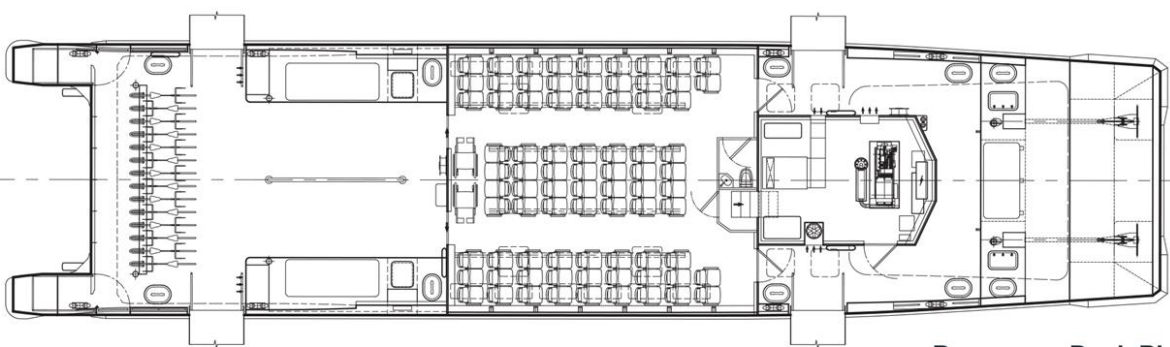
**Outboard Profile**



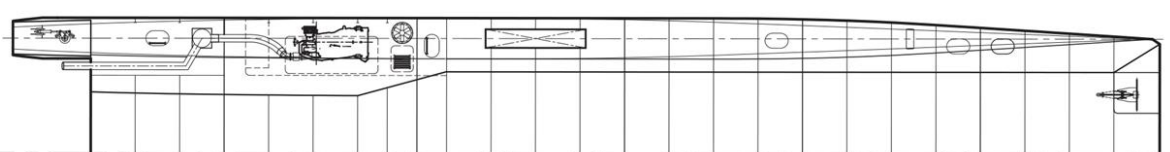
**Inboard Profile**



**Plan View**



**Passenger Deck Plan**



**Machinery Spaces**