

35m High Speed Pax Ferry



Principal Particulars

Length overall	35	metres
Length waterline	33.4	metres
Moulded beam	9.6	metres
Design draught	1.3	metres

Deadweight

Passengers	154	
Crew	10	
Fuel	28,500	litres
Fresh water	3,000	litres
Maximum deadweight	42.9	tonnes

Performance & Range

Speed	30	knots
Service speed	25	knots

Machinery

Main engines
2 x Cummins KTA50 M2 @ 1342 kW

Propulsors
2 x Hamilton HM 721

Construction

Aluminium

Design Standard

Class
INIDAN REGISTER OF SHIPPING IMO HSC
2000 CATEGORY B

Owner

Shipping Corporation of India

Project No

NG513

Builder

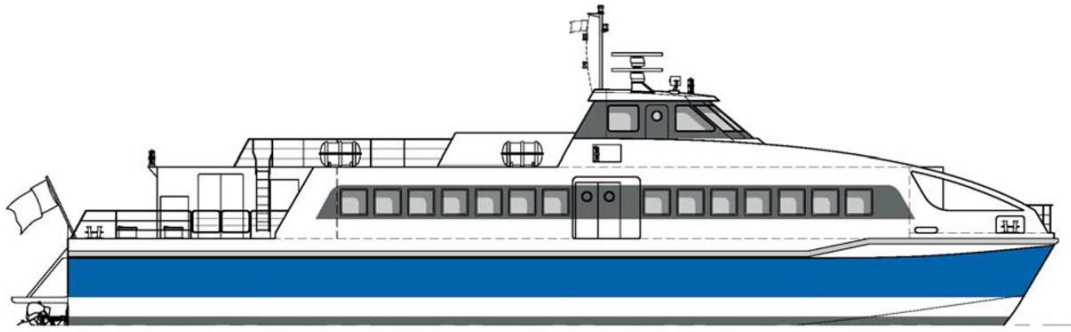
Penguin Shipyard

Year Launched

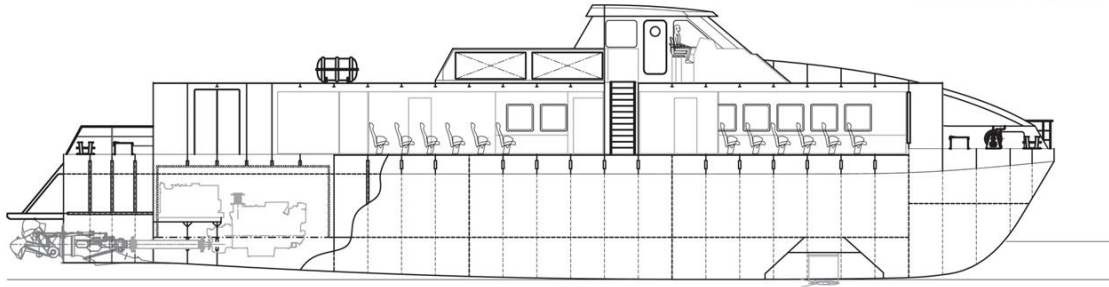
2006

No Built

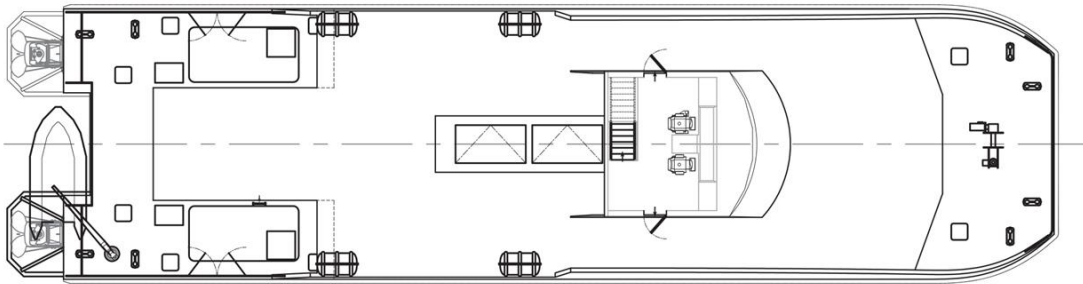
3



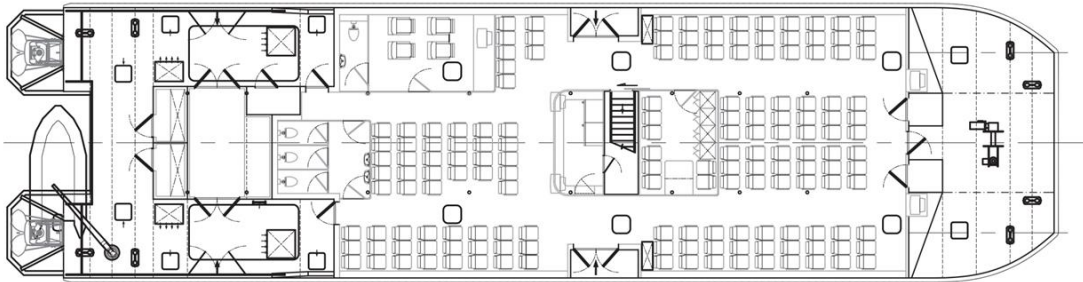
Outboard Profile



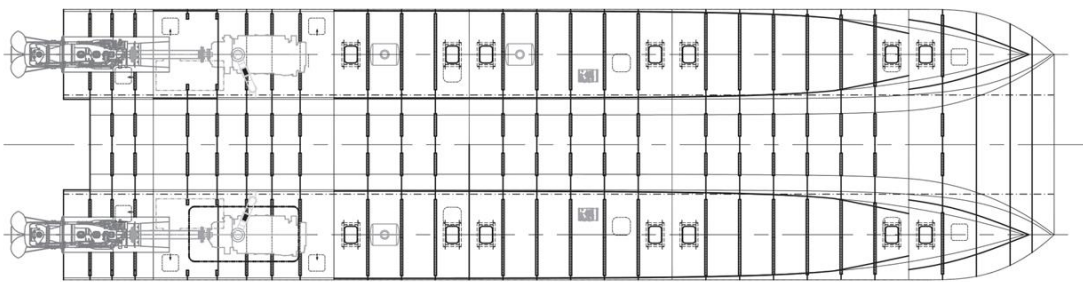
Inboard Profile



External Plan View



Passenger Deck Plan



Tank Deck Plan