



Principal Particulars

| | | |
|------------------|-----|--------|
| Length overall | 9.9 | metres |
| Length waterline | 7.8 | metres |
| Moulded beam | 3.6 | metres |
| Design draught | 0.6 | metres |

Deadweight

| | | |
|--------------------|-----|--------|
| Crew | 5 | |
| Fuel | 200 | litres |
| Maximum deadweight | 1.9 | tonnes |

Performance & Range

| | | |
|-------|----|-------|
| Speed | 40 | knots |
|-------|----|-------|

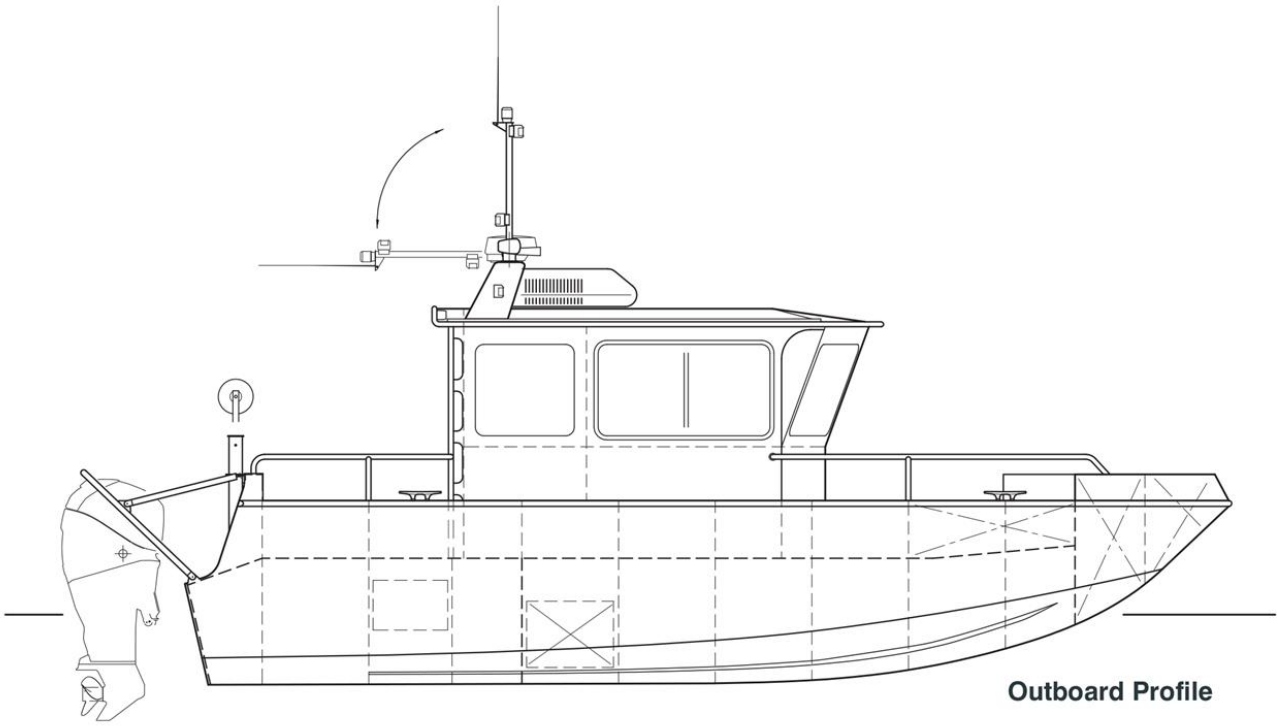
Machinery

Main engines 2 x Mercury Verado @ 275 BHP

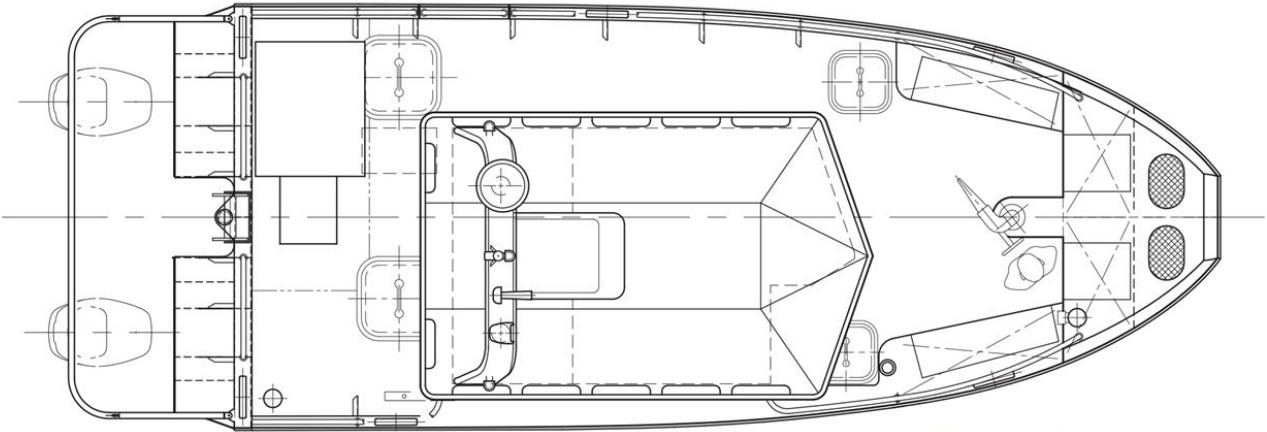
Construction

Aluminium

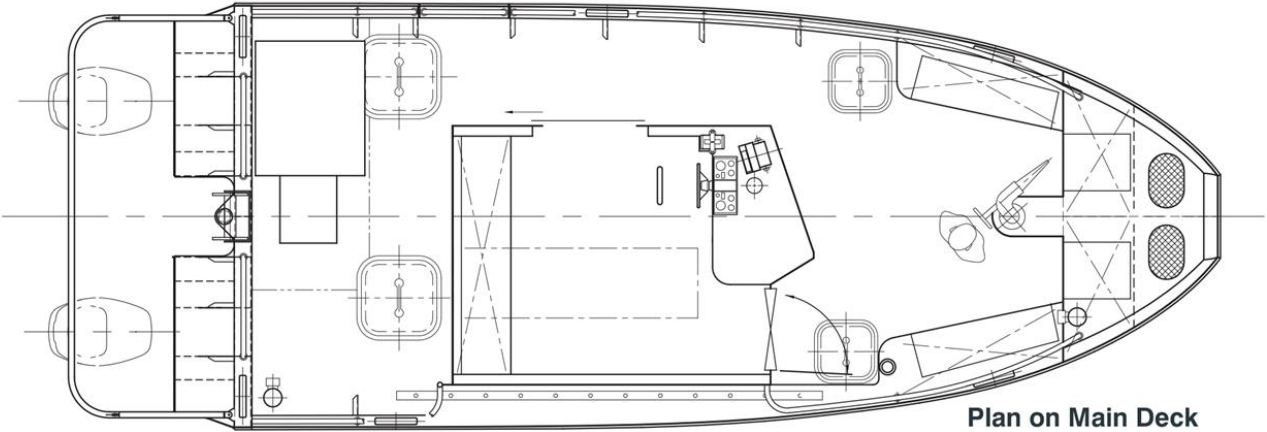




Outboard Profile



Plan on Wheelhouse



Plan on Main Deck