



Principal Particulars

Length overall	40.9	metres
Length waterline	38.6	metres
Moulded beam	12	metres
Design draught	1.7	metres

Deadweight

Passengers	260	
Vehicles (bicycles)	20	
Crew	3	
Cargo	3	tonnes
Fuel	5,530	litres
Fresh water	1,400	litres
Black water	1,000	litres
Maximum deadweight	29.1	tonnes

Performance & Range

Speed	25	knots
Service speed	21	knots

Machinery

Main engines	2 x CAT C32 970kW @ 2100
Propulsors	2 x Fixed Pitch Propellers

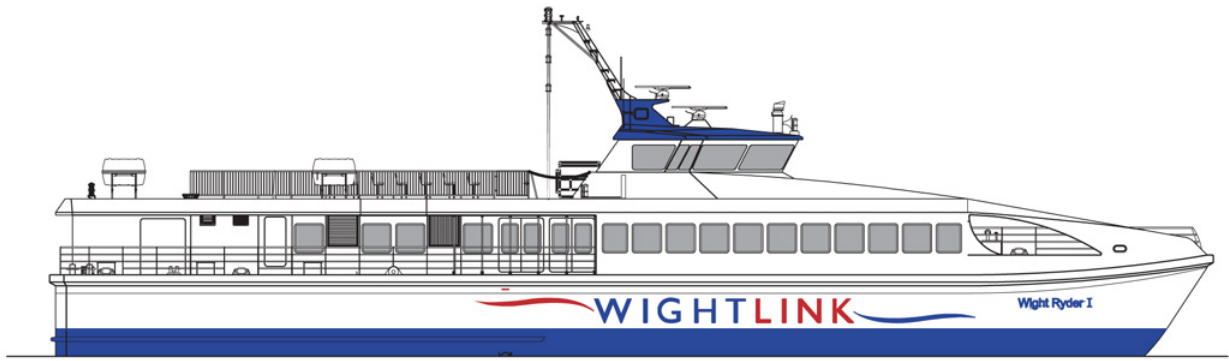
Construction

Aluminium

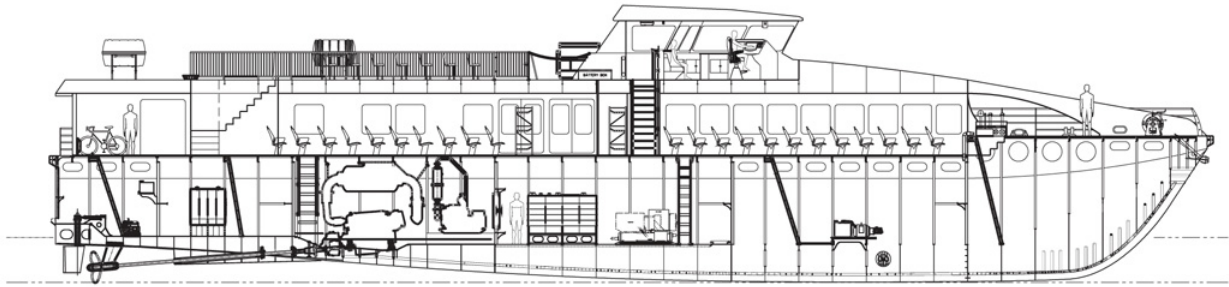
Design Standard

Class	Lloyds Register LR100 A1 SSC G3 MCA / HSC2000 CAT A
Flag	MCA IMO HSC

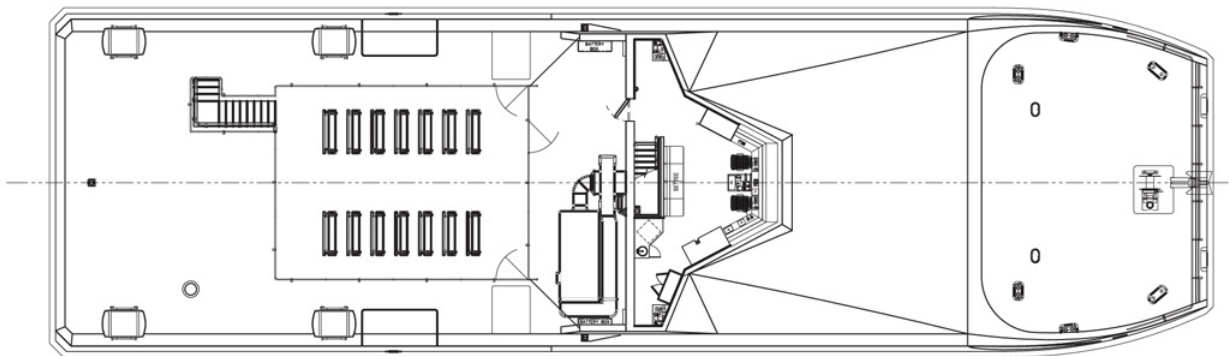




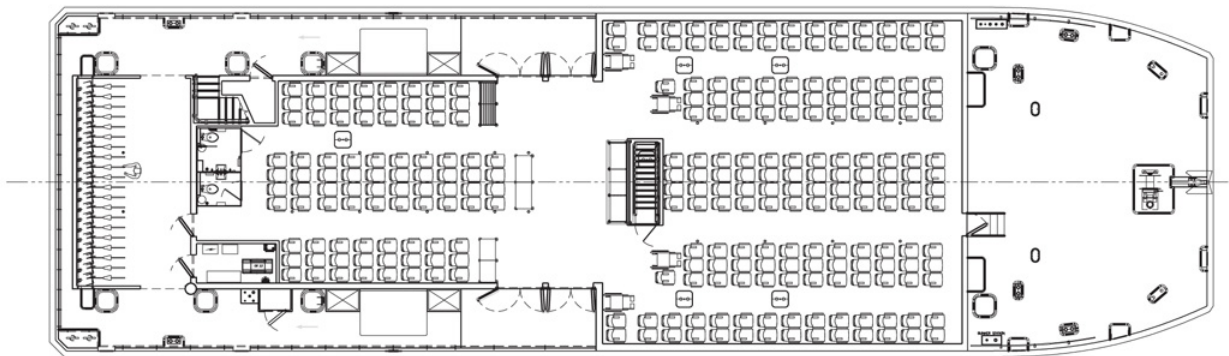
Outboard Profile



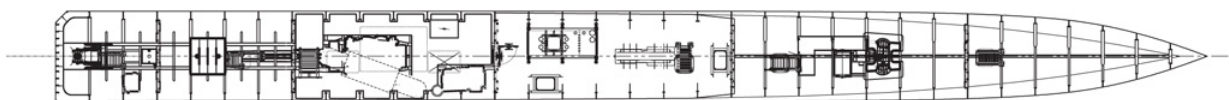
Inboard Profile



Upper Deck



Main Deck



Below Deck