

58m High Speed Ro Pax Ferry



Principal Particulars

Length overall	57.8	metres
Length waterline	51.9	metres
Moulded beam	14	metres
Design draught	2.1	metres

Deadweight

Passengers	358	
Vehicles (cars)	10	
Crew	12	
Fuel	40,000	litres
Fresh water	3,000	litres
Black water	3,000	litres
Maximum deadweight	90.9	tonnes

Performance & Range

Speed	32	knots
-------	----	-------

Machinery

Main engines	4 x MTU 12V 4000 M71, 1850 kW at 2000 rpm
Propulsors	4 x Kamewa 71 SII

Construction

Aluminium

Design Standard

Class	Bureau Veritas
Flag	French Marine Marchande (IMO HSC 2000 CAT B)



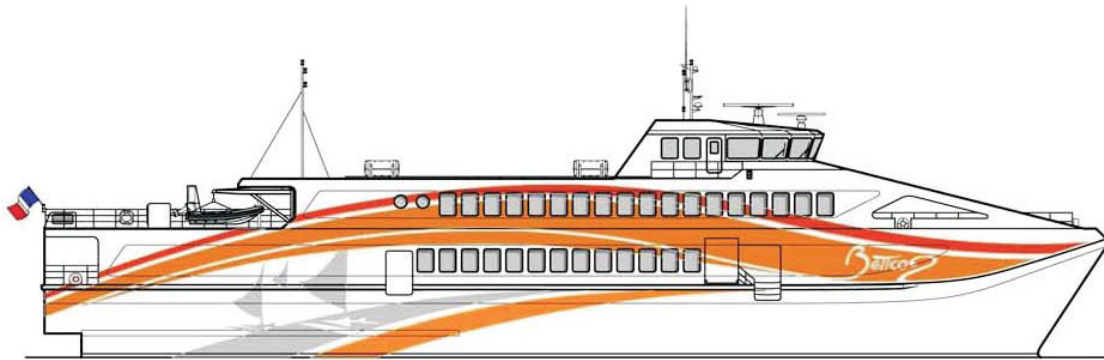
Year launched
2008

Number built
1

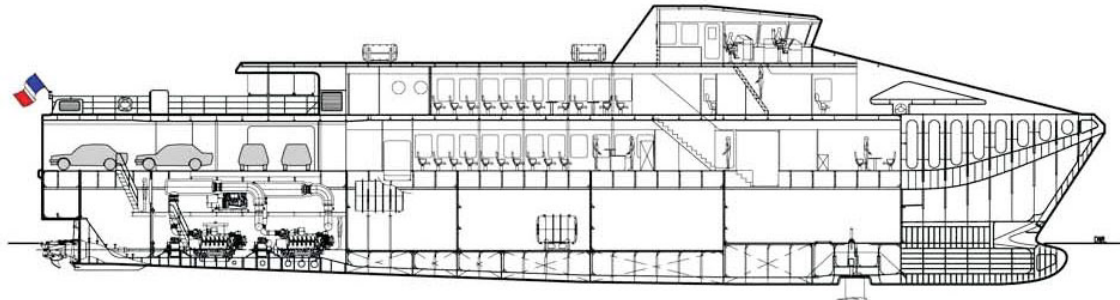
Owner
Sudiles

Project No
NG586

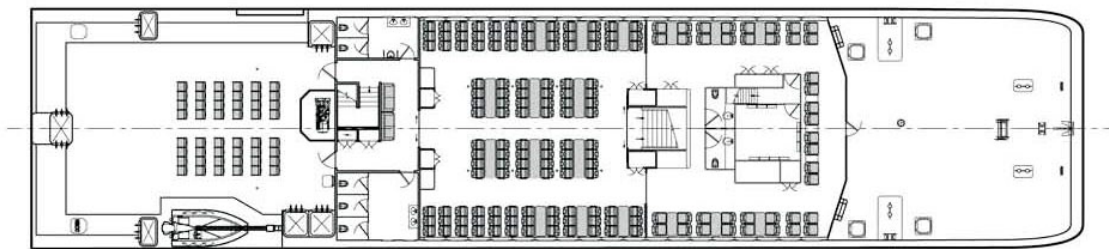
Builder
FBMA



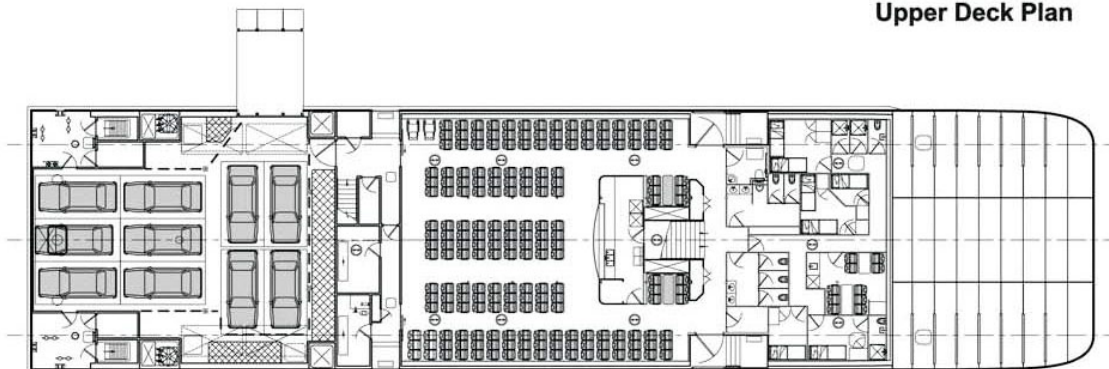
Outboard Profile



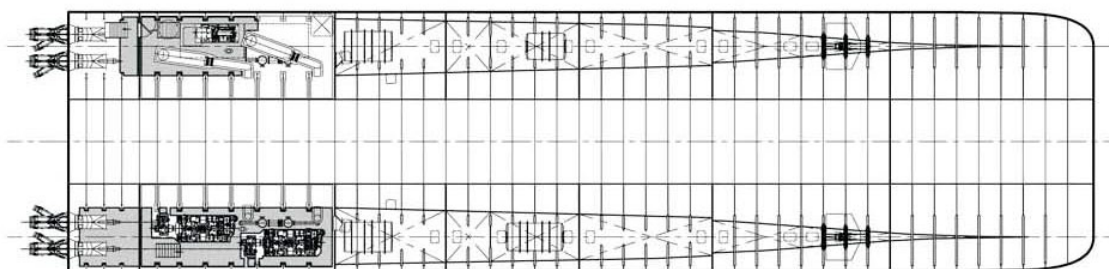
Inboard Profile



Upper Deck Plan



Lower Deck Plan



Plan View on Hulls