



## Principal Particulars

Length overall	34.3	metres
Length waterline	29.4	metres
Moulded beam	7.4	metres
Design draught	1.4	metres

## Deadweight

Officers	7	
Crew	16	
Fuel	23,000	litres
Fresh water	3,100	litres
Maximum deadweight	26.3	tonnes

## Performance & Range

Speed	30.5	knots
-------	------	-------

## Machinery

Main engines	3 x MTU 12V 2000 M84 (3x1220kw)	
Propulsors	3 x Rolls Royce 50A3 waterjets	

## Construction

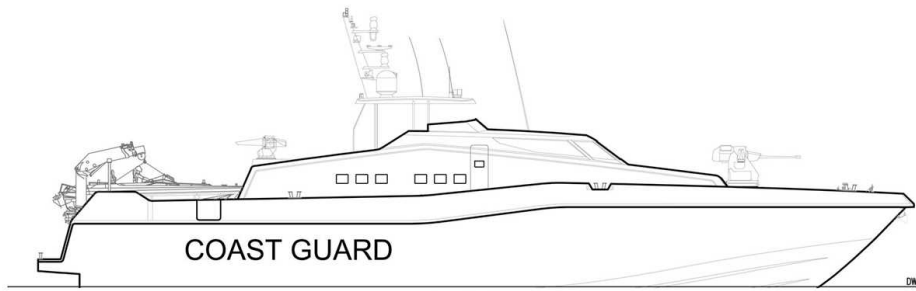
Composite

## Design Standard

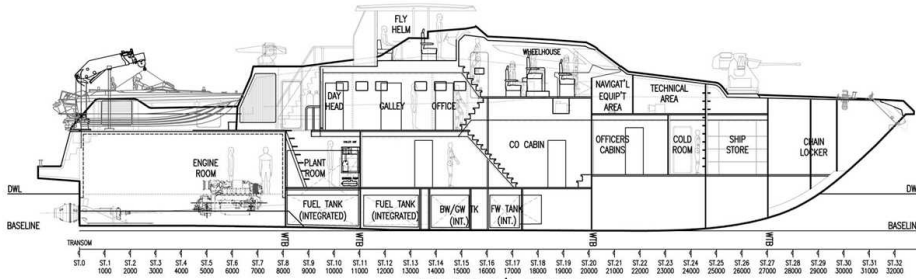
Class	Turk Loydu
Flag	Qatar Flag



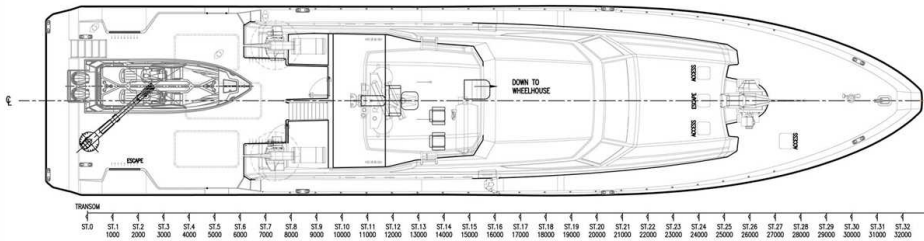
Year launched	Number built	Owner	Project No	Builder
2016	10	Qatar Coastguard	NG956	Ares Shipyard Ltd



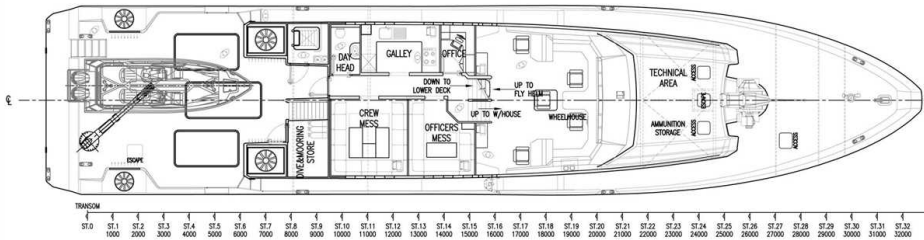
OUTBOARD PROFILE  
LOOKING TO PORT



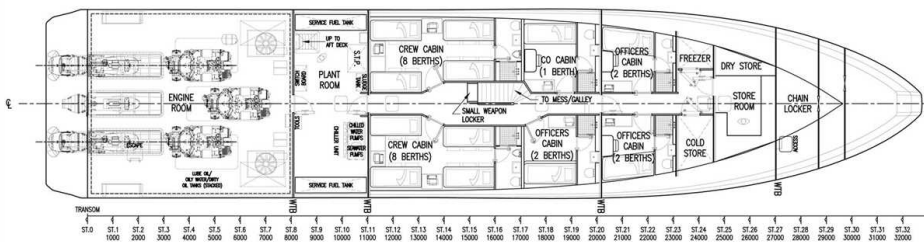
INBOARD C/L PROFILE  
LOOKING TO PORT



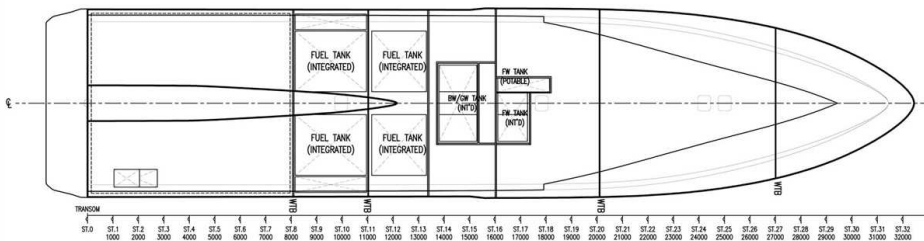
TOP VIEW



MAIN DECK



LOWER DECK



TANK DECK