



Principal Particulars

Length overall	26.2	metres
Length waterline	24.3	metres
Moulded beam	8.9	metres
Design draught	1.5	metres

Deadweight

Passengers	24	
Crew	3	
Cargo	15	tonnes
Fuel	35,000	litres
Fresh water	3,000	litres
Black water	500	litres
Maximum deadweight	30	tonnes

Performance & Range

Speed	27	knots
Service speed	25	knots

Machinery

Main engines	4 x Volvo Penta D13
Propulsors	4 x Volvo Penta IPS 900

Construction

Hull	Aluminium
Superstructure	Aluminium

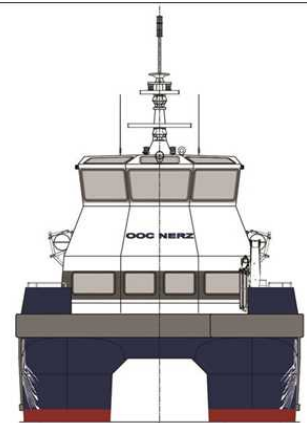
Design Standard

Class	LRS 100A1, SSC, WORKBOAT, CATAMARAN, HSC, G3 MCH
Flag	BG VERKEHR for Offshore Service Craft

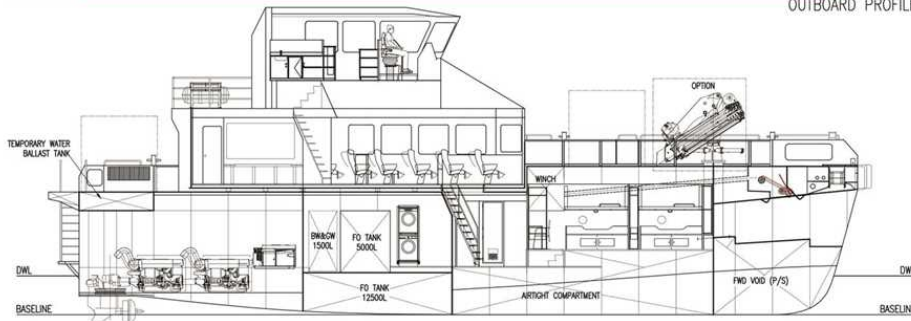




OUTBOARD PROFILE

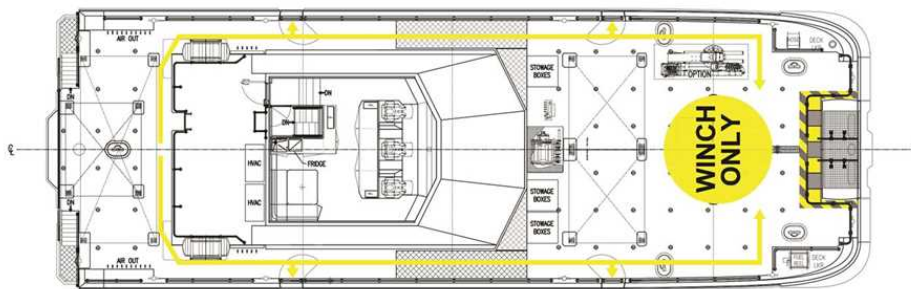


VIEW ON BOW



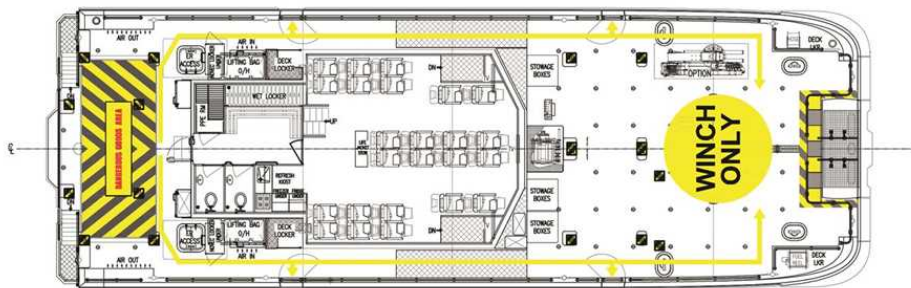
INBOARD PROFILE

FR.0	FR.1	FR.2	FR.3	FR.4	FR.5	FR.6	FR.7	FR.8	FR.9	FR.10	FR.11	FR.12	FR.13	FR.14	FR.15	FR.16	FR.17	FR.18	FR.19	FR.20	FR.21
TRANSOM	1200	2400	3600	4800	6000	7200	8400	9600	10800	12000	13200	14400	15600	16800	18000	19200	20400	21100	22300	23500	24700



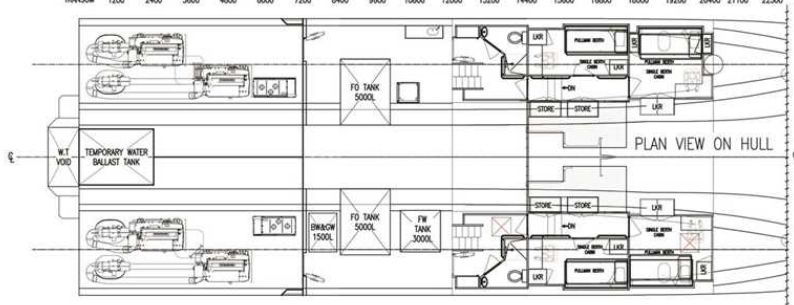
PLAN VIEW BRIDGE

FR.0	FR.1	FR.2	FR.3	FR.4	FR.5	FR.6	FR.7	FR.8	FR.9	FR.10	FR.11	FR.12	FR.13	FR.14	FR.15	FR.16	FR.17	FR.18	FR.19	FR.20	FR.21
TRANSOM	1200	2400	3600	4800	6000	7200	8400	9600	10800	12000	13200	14400	15600	16800	18000	19200	20400	21100	22300	23500	24700



PLAN VIEW ON MAIN DECK

FR.0	FR.1	FR.2	FR.3	FR.4	FR.5	FR.6	FR.7	FR.8	FR.9	FR.10	FR.11	FR.12	FR.13	FR.14	FR.15	FR.16	FR.17	FR.18	FR.19	FR.20	FR.21
TRANSOM	1200	2400	3600	4800	6000	7200	8400	9600	10800	12000	13200	14400	15600	16800	18000	19200	20400	21100	22300	23500	24700



PLAN VIEW ON HULL