

26m Windfarm Support Vessel



Principal Particulars

Length overall	27.5	metres
Length waterline	24.3	metres
Moulded beam	8.9	metres
Design draught	1.5	metres

Deadweight

Passengers	12	
Crew	4	
Cargo	20	tonnes
Fuel	30,000	litres
Fresh water	3,000	litres
Black water	1,500	litres
Maximum deadweight	33.3	tonnes

Performance & Range

Speed	28	knots
Service speed	26	knots

Machinery

Main engines
4 x CAT C18 ACERT 651 kW

Propulsors
4 x HAMILTON HM521 Waterjets

Construction

Aluminium

Design Standard

Class
LRS100A1, SSC, WORKBOAT, CATAMARAN, HSC, G3 MCH

Owner

Windea Offshore

Project No

NG995

Builder

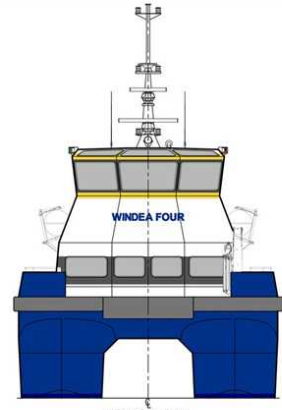
Strategic Marine

Year Launched

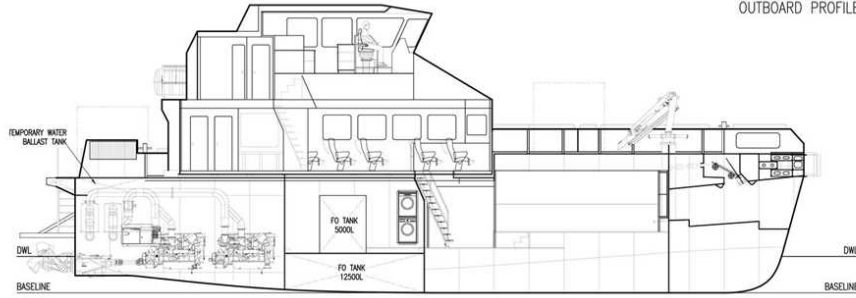
2016



OUTBOARD PROFILE

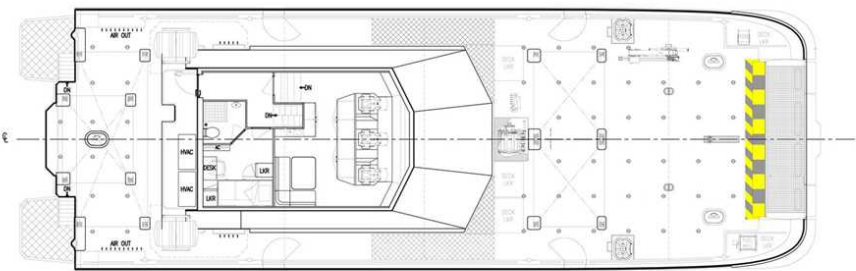


VIEW ON BOW



INBOARD PROFILE

FR.0	FR.1	FR.2	FR.3	FR.4	FR.5	FR.6	FR.7	FR.8	FR.9	FR.10	FR.11	FR.12	FR.13	FR.14	FR.15	FR.16	FR.17	FR.18	FR.19	FR.20	FR.21
TRANSOM	1200	2400	3600	4800	6000	7200	8400	9600	10800	12000	13200	14400	15600	16800	18000	19200	20400	21100	22300	23500	24700



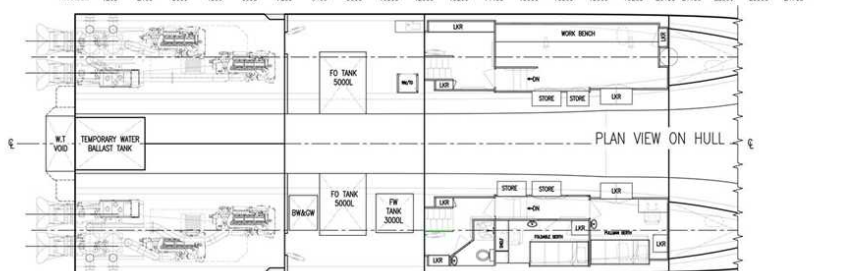
PLAN VIEW BRIDGE

FR.0	FR.1	FR.2	FR.3	FR.4	FR.5	FR.6	FR.7	FR.8	FR.9	FR.10	FR.11	FR.12	FR.13	FR.14	FR.15	FR.16	FR.17	FR.18	FR.19	FR.20	FR.21
TRANSOM	1200	2400	3600	4800	6000	7200	8400	9600	10800	12000	13200	14400	15600	16800	18000	19200	20400	21100	22300	23500	24700



PLAN VIEW ON MAIN DECK

FR.0	FR.1	FR.2	FR.3	FR.4	FR.5	FR.6	FR.7	FR.8	FR.9	FR.10	FR.11	FR.12	FR.13	FR.14	FR.15	FR.16	FR.17	FR.18	FR.19	FR.20	FR.21
TRANSOM	1200	2400	3600	4800	6000	7200	8400	9600	10800	12000	13200	14400	15600	16800	18000	19200	20400	21100	22300	23500	24700



PLAN VIEW ON HULL

FR.0	FR.1	FR.2	FR.3	FR.4	FR.5	FR.6	FR.7	FR.8	FR.9	FR.10	FR.11	FR.12	FR.13	FR.14	FR.15	FR.16	FR.17	FR.18	FR.19	FR.20	FR.21
TRANSOM	1200	2400	3600	4800	6000	7200	8400	9600	10800	12000	13200	14400	15600	16800	18000	19200	20400	21100	22300	23500	24700

Building 14, Shamrock Quay, William Street,
Southampton, Hampshire, SO14 5QL, United
Kingdom

Tel: +44 (0)23 8022 6655
E-mail: shipdesign.cs@bmtglobal.com
Web: www.bmt.org