



## Principal Particulars

Length overall	26.3	metres
Length waterline	26.2	metres
Moulded beam	6.5	metres
Design draught	1.3	metres



## Deadweight

Passengers	149	
Crew	3	
Fuel	3,200	litres
Fresh water	200	litres
Maximum deadweight	10	tonnes

## Performance & Range

Speed	24	knots
Service speed	22	knots

## Machinery

Main engines	2 x John Deere 6135SFM85 M2 (373 kW)
Propulsors	2 x FP propellers



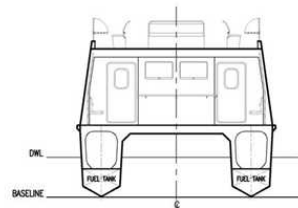
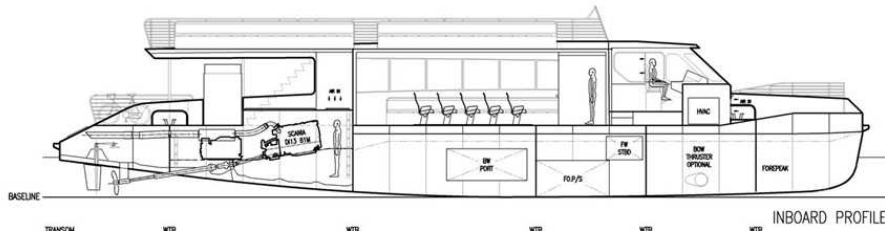
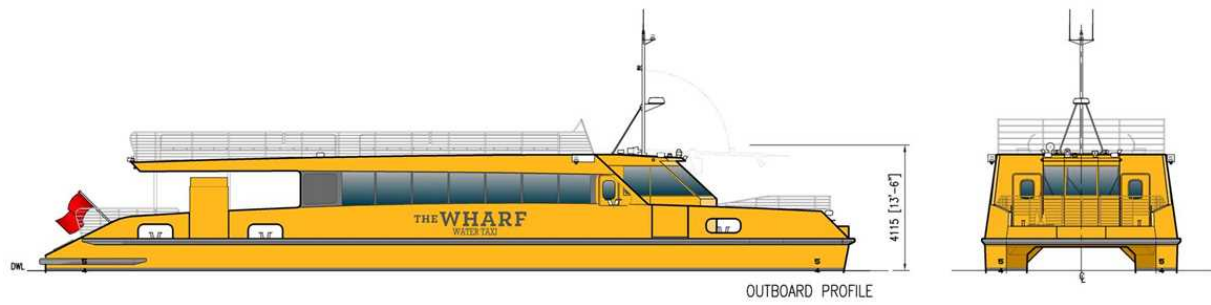
## Construction

aluminium	
Hull	aluminium
Superstructure	aluminium

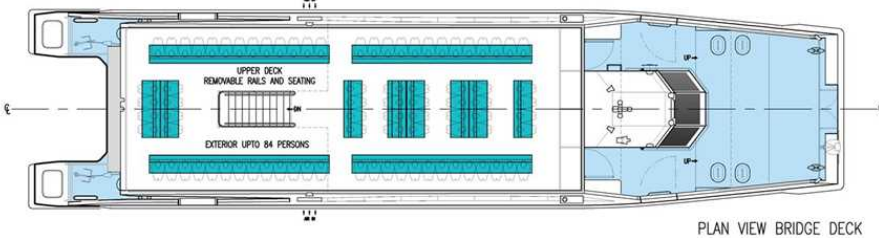
## Design Standard

Class	USCG 46 CFR Subchapter T, Small Passenger Vessels
Flag	USCG

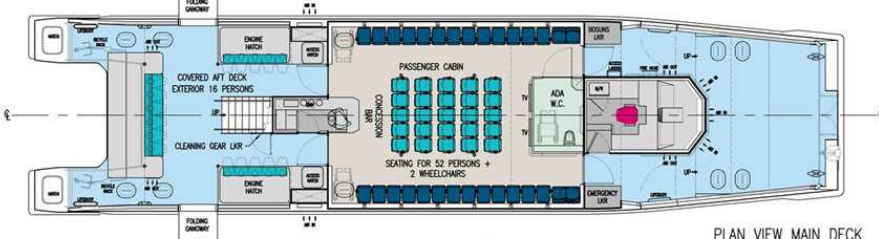
Year launched	Number built	Owner	Project No	Builder
2017	2	Potomac Riverboat	NG1039	Metal Shark



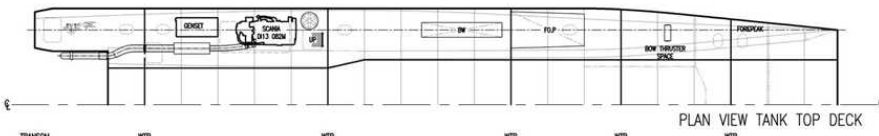
TRANSOM	FR.0	FR.1	FR.2	FR.3	FR.4	FR.5	FR.6	FR.7	FR.8	FR.9	FR.10	FR.11	FR.12	FR.13	FR.14	FR.15	FR.16	FR.17	FR.18	FR.19	FR.20	FR.21
WTB	1200	2400	3600	4800	6000	7200	8400	9600	10800	12000	13200	14400	15600	16800	18000	19200	20400	21600	22800	24000	25200	



TRANSOM	FR.0	FR.1	FR.2	FR.3	FR.4	FR.5	FR.6	FR.7	FR.8	FR.9	FR.10	FR.11	FR.12	FR.13	FR.14	FR.15	FR.16	FR.17	FR.18	FR.19	FR.20	FR.21
WTB	1200	2400	3600	4800	6000	7200	8400	9600	10800	12000	13200	14400	15600	16800	18000	19200	20400	21600	22800	24000	25200	



TRANSOM	FR.0	FR.1	FR.2	FR.3	FR.4	FR.5	FR.6	FR.7	FR.8	FR.9	FR.10	FR.11	FR.12	FR.13	FR.14	FR.15	FR.16	FR.17	FR.18	FR.19	FR.20	FR.21
WTB	1200	2400	3600	4800	6000	7200	8400	9600	10800	12000	13200	14400	15600	16800	18000	19200	20400	21600	22800	24000	25200	



TRANSOM	FR.0	FR.1	FR.2	FR.3	FR.4	FR.5	FR.6	FR.7	FR.8	FR.9	FR.10	FR.11	FR.12	FR.13	FR.14	FR.15	FR.16	FR.17	FR.18	FR.19	FR.20	FR.21
WTB	1200	2400	3600	4800	6000	7200	8400	9600	10800	12000	13200	14400	15600	16800	18000	19200	20400	21600	22800	24000	25200	