



Principal Particulars

Length overall	32	metres
Length waterline	31.7	metres
Moulded beam	7.7	metres
Design draught	1.3	metres

Deadweight

Passengers	149	
Fuel	1,057	litres
Fresh water	132	litres
Black water	132	litres

Performance & Range

Speed	22.5	knots
Range	20	NM

Machinery

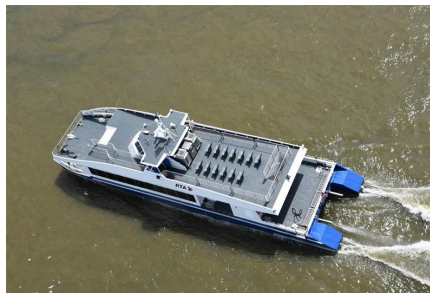
Main engines	2 x CAT C18 500kW
Propulsors	2 x FPP Ø900mm

Construction

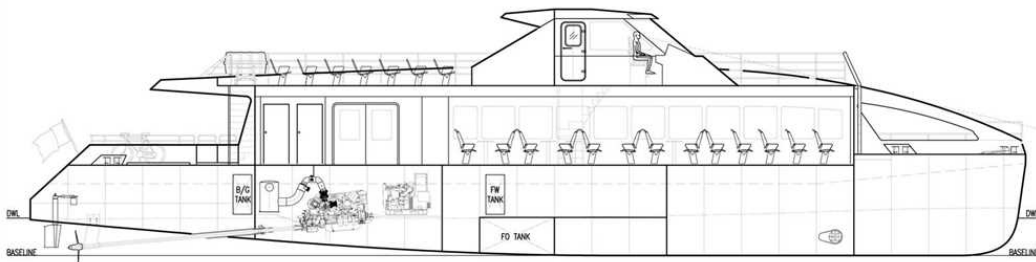
Hull	Aluminium
Superstructure	Aluminium

Design Standard

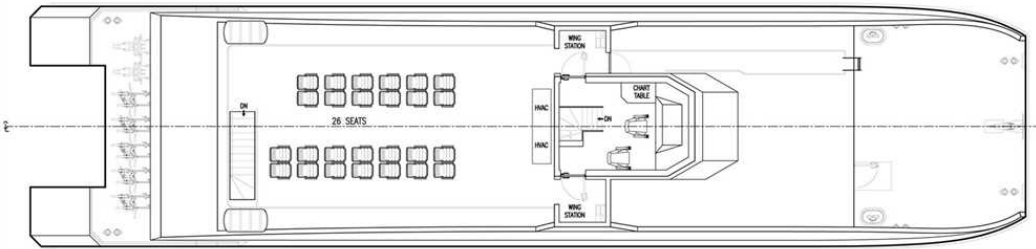
Class	USCG 46 CFR Subchapter T, Small Passenger Vessels
Flag	USCG



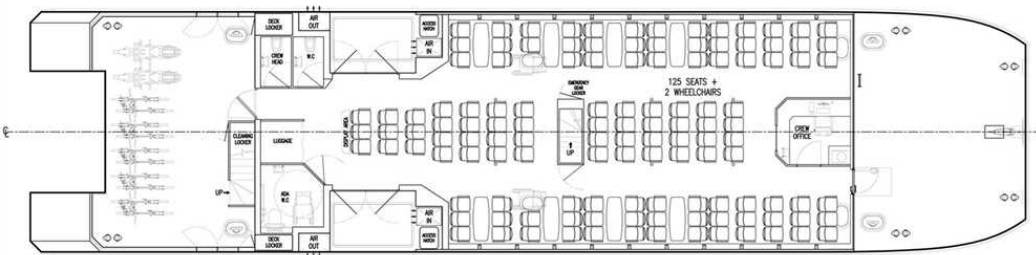
Year launched	Number built	Owner	Project No	Builder
2018	2	New Orleans Regional Transit Authority	NG1068	Metal Shark



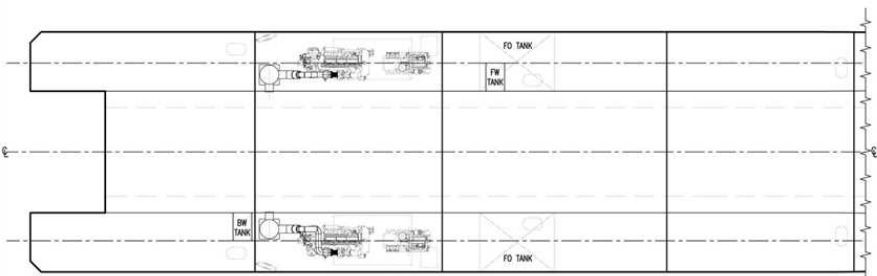
TRANSOM	FR.0	FR.1	FR.2	FR.3	FR.4	FR.5	FR.6	FR.7	FR.8	FR.9	FR.10	FR.11	FR.12	FR.13	FR.14	FR.15	FR.16	FR.17	FR.18	FR.19	FR.20	FR.21	FR.22	FR.23	FR.24	FR.25	FR.26
	1200	2400	3600	4800	6000	7200	8400	9600	10800	12000	13200	14400	15600	16800	18000	19200	20400	21600	22800	24000	25200	26400	27600	28800	30000	31200	



TRANSOM	FR.0	FR.1	FR.2	FR.3	FR.4	FR.5	FR.6	FR.7	FR.8	FR.9	FR.10	FR.11	FR.12	FR.13	FR.14	FR.15	FR.16	FR.17	FR.18	FR.19	FR.20	FR.21	FR.22	FR.23	FR.24	FR.25	FR.26
	1200	2400	3600	4800	6000	7200	8400	9600	10800	12000	13200	14400	15600	16800	18000	19200	20400	21600	22800	24000	25200	26400	27600	28800	30000	31200	



TRANSOM	FR.0	FR.1	FR.2	FR.3	FR.4	FR.5	FR.6	FR.7	FR.8	FR.9	FR.10	FR.11	FR.12	FR.13	FR.14	FR.15	FR.16	FR.17	FR.18	FR.19	FR.20	FR.21	FR.22	FR.23	FR.24	FR.25	FR.26
	1200	2400	3600	4800	6000	7200	8400	9600	10800	12000	13200	14400	15600	16800	18000	19200	20400	21600	22800	24000	25200	26400	27600	28800	30000	31200	



TRANSOM	FR.0	FR.1	FR.2	FR.3	FR.4	FR.5	FR.6	FR.7	FR.8	FR.9	FR.10	FR.11	FR.12	FR.13	FR.14	FR.15	FR.16	FR.17	FR.18	FR.19	FR.20	FR.21	FR.22
	1200	2400	3600	4800	6000	7200	8400	9600	10800	12000	13200	14400	15600	16800	18000	19200	20400	21600	22800	24000	25200	26400	