



Principal Particulars

Length overall	19.4	metres
Length waterline	18.8	metres
Moulded beam	7	metres
Design draught	1.1	metres

Deadweight

Technicians	12	
Crew	3	
Cargo	7.5	tonnes
Fuel	5,500	litres
Fresh water	500	litres
Black water	125	litres
Maximum deadweight	8.9	tonnes

Performance & Range

Speed	28	knots
Service speed	25	knots

Machinery

Main engines	2 x MTU8V2000M72 (720 kW)
Propulsors	2 x Hamilton HM571 Waterjets

Construction

Aluminium

Design Standard

Class	GL +100 A5 II HSDE Work Boat / (+) MC
Flag	Dutch Flag



Year launched
2012

Number built
2 + 3 in build

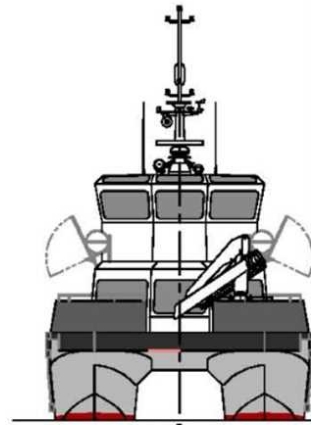
Owner
Royal Wagenborg

Project No
NG781

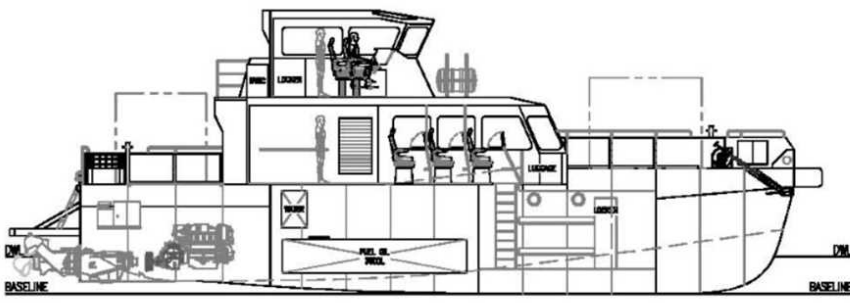
Builder
Veka Shipyard BV



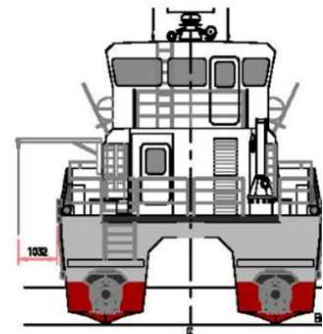
OUTBOARD PROFILE



VIEW ON BOW

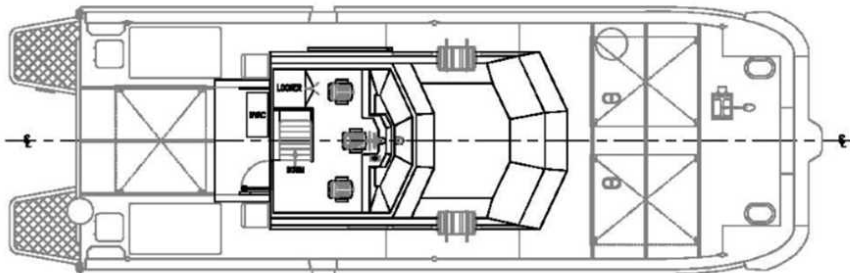


INBOARD PROFILE



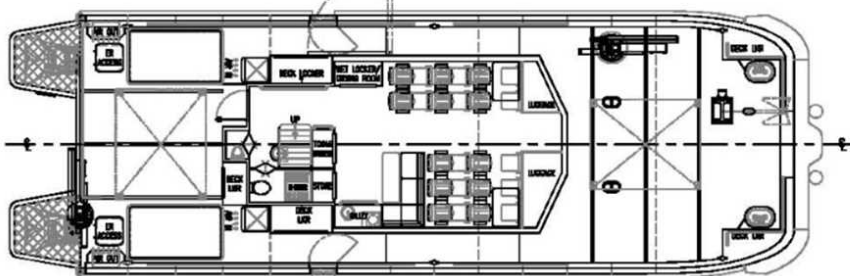
VIEW ON TRANSOM

TRANSOM	WB														
FR.0	FR.1	FR.2	FR.3	FR.4	FR.5	FR.6	FR.7	FR.8	FR.9	FR.10	FR.11	FR.12	FR.13	FR.14	FR.15
	1280	2580	3670	5180	6000	7200	8400	9600	10800	12000	13200	14400	15600	16800	18000



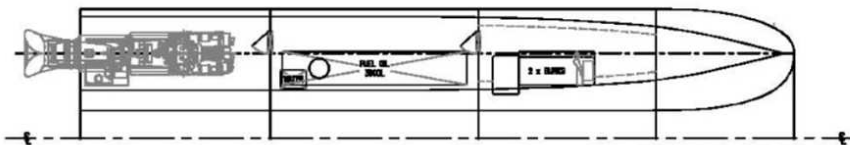
PLAN VIEW BRIDGE

TRANSOM	WB														
FR.0	FR.1	FR.2	FR.3	FR.4	FR.5	FR.6	FR.7	FR.8	FR.9	FR.10	FR.11	FR.12	FR.13	FR.14	FR.15
	1280	2580	3670	5180	6000	7200	8400	9600	10800	12000	13200	14400	15600	16800	18000



PLAN VIEW ON MAIN DECK

TRANSOM	WB														
FR.0	FR.1	FR.2	FR.3	FR.4	FR.5	FR.6	FR.7	FR.8	FR.9	FR.10	FR.11	FR.12	FR.13	FR.14	FR.15
	1280	2580	3670	5180	6000	7200	8400	9600	10800	12000	13200	14400	15600	16800	18000



HALF PLAN VIEW ON HULL