



Principal Particulars

Length overall	21.8	metres
Length waterline	18.8	metres
Moulded beam	7	metres
Design draught	1.2	metres

Deadweight

Technicians	12	
Crew	3	
Cargo	15	tonnes
Fuel	10,000	litres
Fresh water	500	litres
Black water	500	litres
Maximum deadweight	16.7	tonnes

Performance & Range

Speed	25	knots
Service speed	23	knots

Machinery

Main engines	2 x MAN D2842 LE405	662kW
Propulsors	2 x HAMILTON HM571	Waterjets

Construction

Aluminium

Design Standard

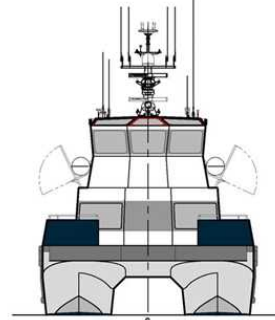
Class	BV Hull •Mach "Wind Farm Service Ship -S1" sea area 1	
Flag	UK Flag MGN 280 Cat 2	



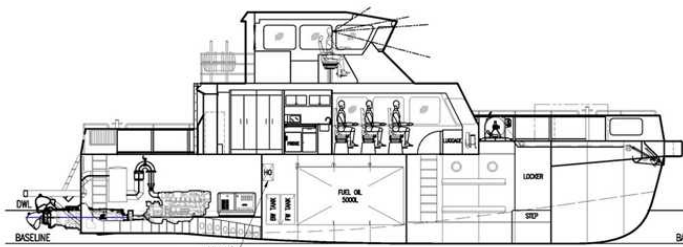
Year launched	Number built	Owner	Project No	Builder
2013	4	MPI Offshore /North Sea Logistics	NG883	Piriou / SEAS



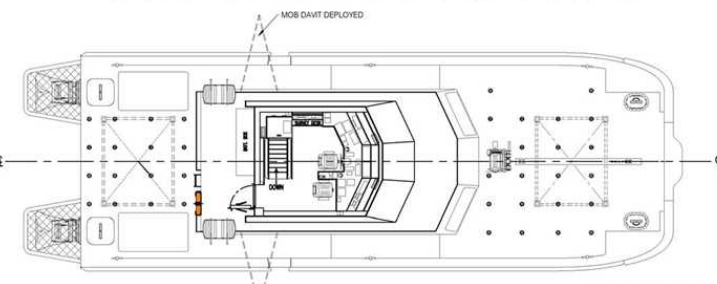
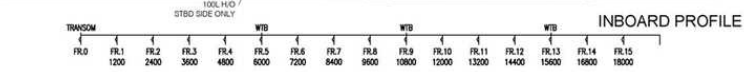
OUTBOARD PROFILE



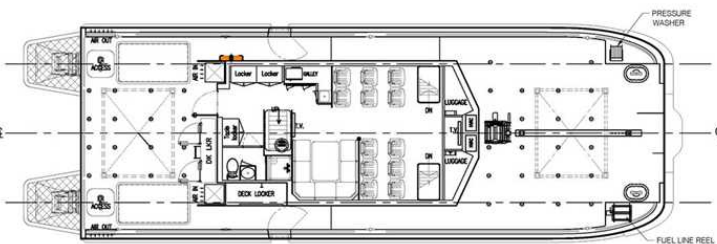
VIEW ON BOW



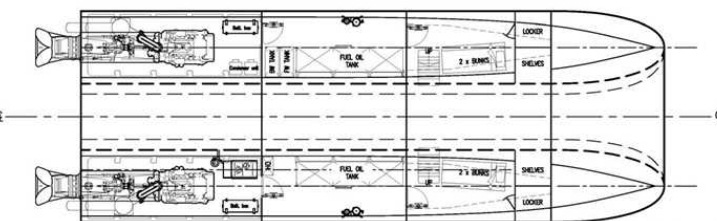
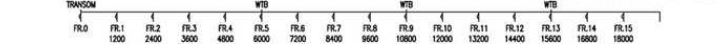
INBOARD PROFILE



PLAN VIEW BRIDGE



PLAN VIEW ON MAIN DECK



PLAN VIEW ON HULL