



## Principal Particulars

Length overall	21.8	metres
Length waterline	18.8	metres
Moulded beam	7	metres
Design draught	1.2	metres

## Deadweight

Technicians	12	
Crew	3	
Cargo	15	tonnes
Fuel	10,000	litres
Fresh water	500	litres
Black water	500	litres
Maximum deadweight	16.7	tonnes

## Performance & Range

Speed	25	knots
Service speed	23	knots

## Machinery

Main engines	2 x MAN D2842 LE405 662kW
Propulsors	2 x HAMILTON HM571 Waterjets

## Construction

Aluminium

## Design Standard

Class	BV Hull •Mach "Wind Farm Service Ship -S1" sea area 1
Flag	UK Flag MGN 280 Cat 2



Year launched  
2013

Number built  
4

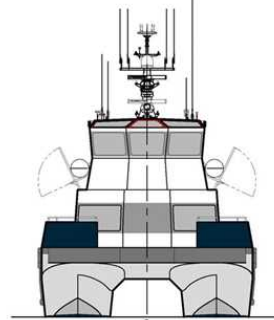
Owner  
MPI Offshore /North Sea  
Logistics

Project No  
NG883

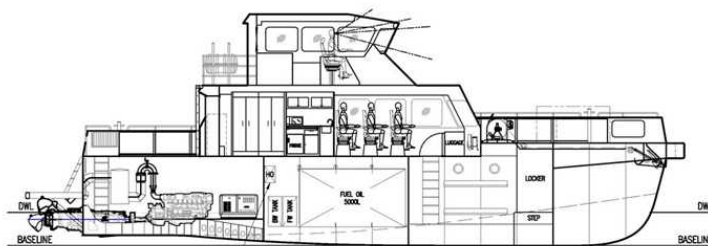
Builder  
Piriou /SEAS



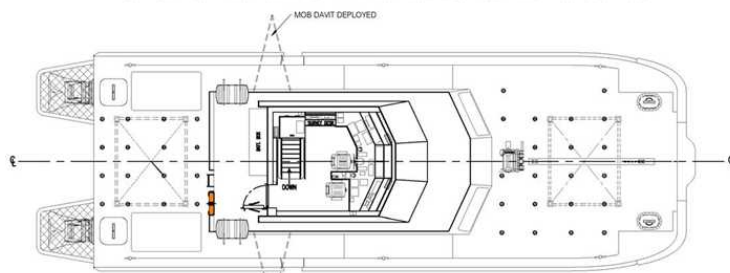
OUTBOARD PROFILE



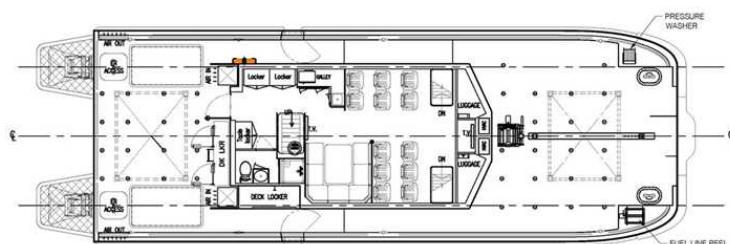
VIEW ON BOW



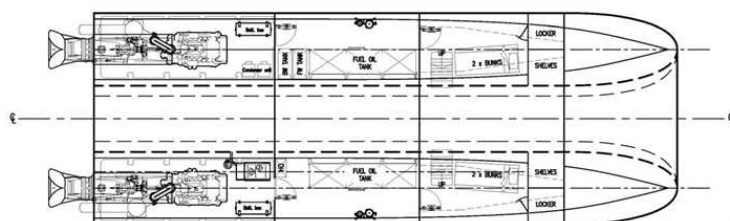
INBOARD PROFILE



PLAN VIEW BRIDGE



PLAN VIEW ON MAIN DECK



PLAN VIEW ON HULL