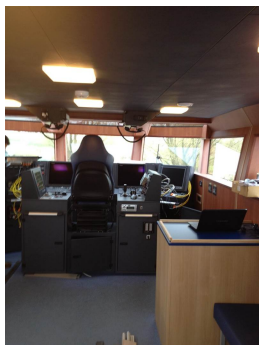


24m XSS Windfarm Support Vessel



Principal Particulars

Length overall	25.3	metres
Length waterline	23.9	metres
Moulded beam	8.5	metres
Design draught	1.8	metres

Deadweight

Technicians	12	
Crew	3	
Cargo	10	tonnes
Fuel	8,400	litres
Fresh water	600	litres
Black water	600	litres
Maximum deadweight	22.3	tonnes

Performance & Range

Speed	27.5	knots
-------	------	-------

Machinery

Main engines
2 x MTU 12V2000M72 (1080 kW)

Propulsors
2 x MJP 550DRB Waterjets

Construction

Aluminium

Design Standard

Class
DNV ✖ 1A1 HSLC R2 Windfarm Service 1 BV
✖Hull ✖Mach "Wind Farm Service Ship -S1"
sea area 3

Flag

MCA Workboat Code CAT1

Owner

Turbine Transfers

Builder

Sepers BV / Neptune

No Built

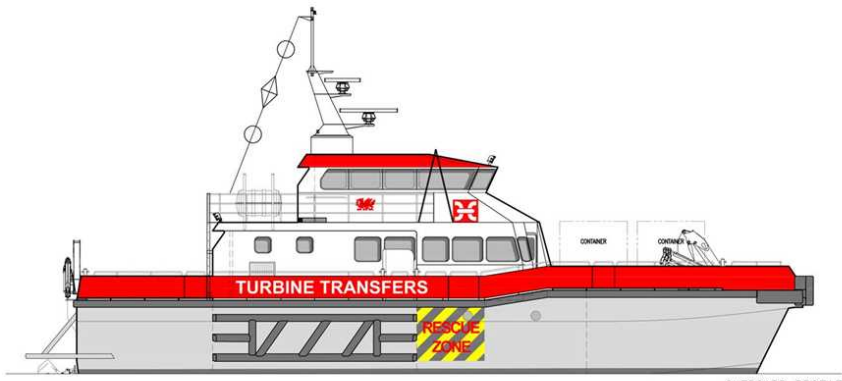
2

Project No

NG806

Year Launched

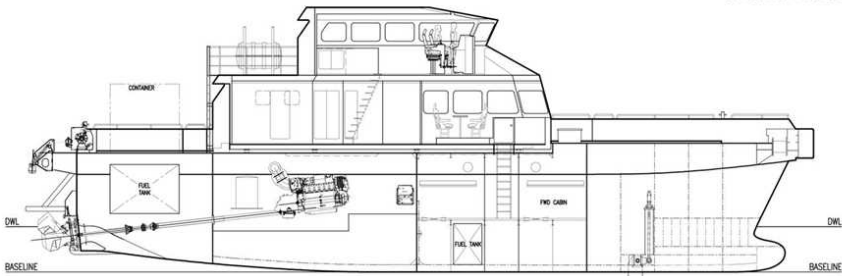
2012/2014



OUTBOARD PROFILE

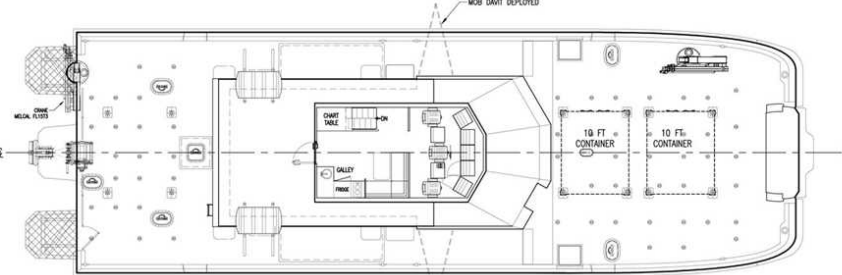


FRONT VIEW



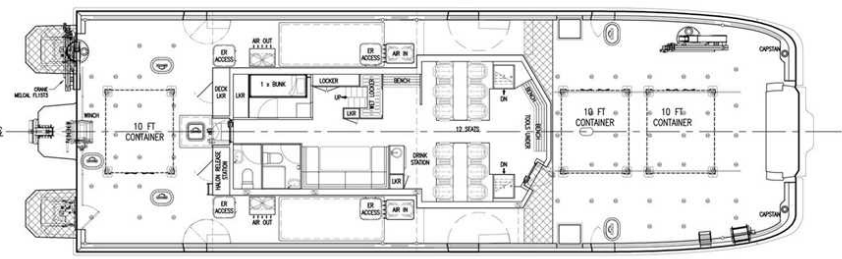
INBOARD PROFILE

TRANSOM	WTB			NON-WTB			WTB			NON-WTB			WTB			NON-WTB			WTB		
FR.0	FR.1	FR.2	FR.3	FR.4	FR.5	FR.6	FR.7	FR.8	FR.9	FR.10	FR.11	FR.12	FR.13	FR.14	FR.15	FR.16	FR.17	FR.18	FR.19	FR.20	FR.21
1200	2400	3600	4800	6000	7200	8400	9600	10800	12000	13200	14400	15600	16800	18000	19200	20400	21600	22800	24000	24000	25200



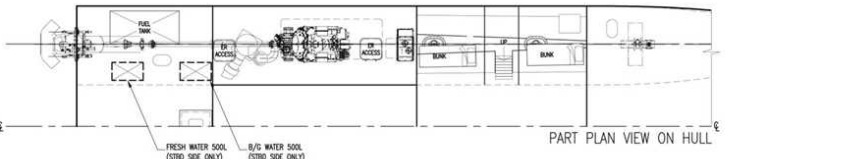
PLAN VIEW BRIDGE

TRANSOM	WTB			NON-WTB			WTB			NON-WTB			WTB			NON-WTB			WTB		
FR.0	FR.1	FR.2	FR.3	FR.4	FR.5	FR.6	FR.7	FR.8	FR.9	FR.10	FR.11	FR.12	FR.13	FR.14	FR.15	FR.16	FR.17	FR.18	FR.19	FR.20	FR.21
1200	2400	3600	4800	6000	7200	8400	9600	10800	12000	13200	14400	15600	16800	18000	19200	20400	21600	22800	24000	24000	25200



PLAN VIEW ON MAIN DECK

TRANSOM	WTB			NON-WTB			WTB			NON-WTB			WTB			NON-WTB			WTB		
FR.0	FR.1	FR.2	FR.3	FR.4	FR.5	FR.6	FR.7	FR.8	FR.9	FR.10	FR.11	FR.12	FR.13	FR.14	FR.15	FR.16	FR.17	FR.18	FR.19	FR.20	FR.21
1200	2400	3600	4800	6000	7200	8400	9600	10800	12000	13200	14400	15600	16800	18000	19200	20400	21600	22800	24000	24000	25200



PART PLAN VIEW ON HULL

Building 14, Shamrock Quay, William Street,
Southampton, Hampshire, SO14 5QL, United
Kingdom

Tel: +44 (0)23 8022 6655
E-mail: shipdesign.cs@bmtglobal.com
Web: www.bmt.org