

20m Windfarm Support Vessel



Principal Particulars

Length overall	20.2	metres
Length waterline	18.8	metres
Moulded beam	7.3	metres
Design draught	1.3	metres

Deadweight

Technicians	12	
Crew	3	
Cargo	11	tonnes
Fuel	4,800	litres
Fresh water	500	litres
Black water	500	litres
Maximum deadweight	17.9	tonnes

Performance & Range

Speed	28	knots
Service speed	25	knots

Machinery

Main engines
2 x CAT C18 ACERT 651kW

Propulsors
2 x Fixed Pitch Propellers

Construction

Aluminium

Design Standard

Class
BV *Hull *Mach "Wind Farm Service Ship - S1" sea area 3

Flag
MCA MGN280 Cat 2

Owner

Turbine Transfers

Project No

NG898

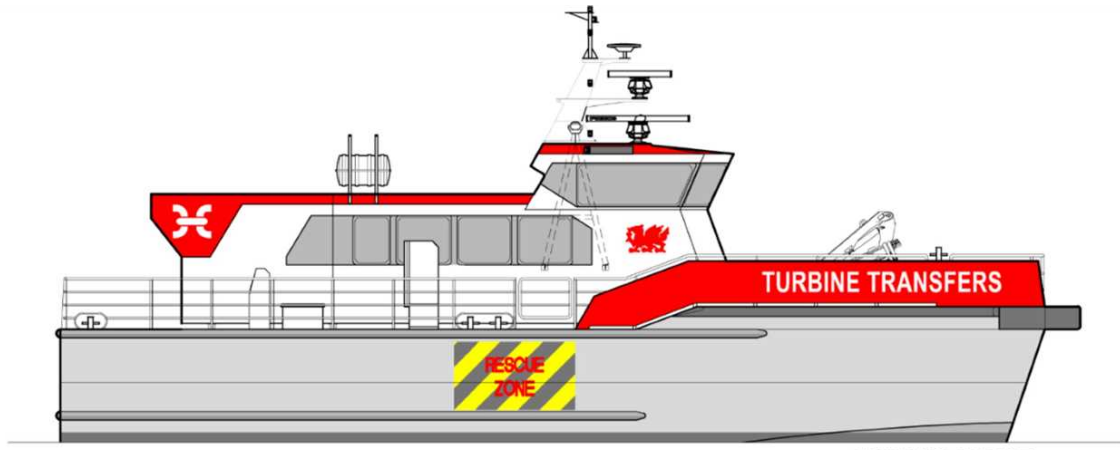
Builder

Mustang Marine

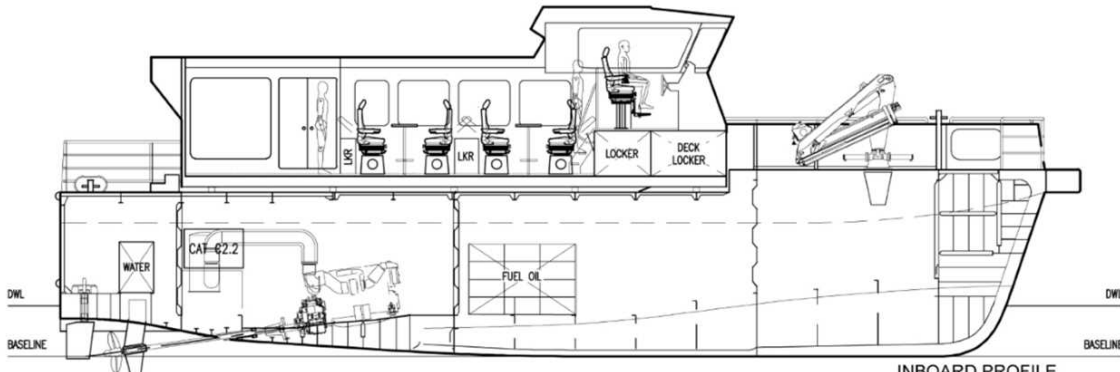
Year Launched

2014

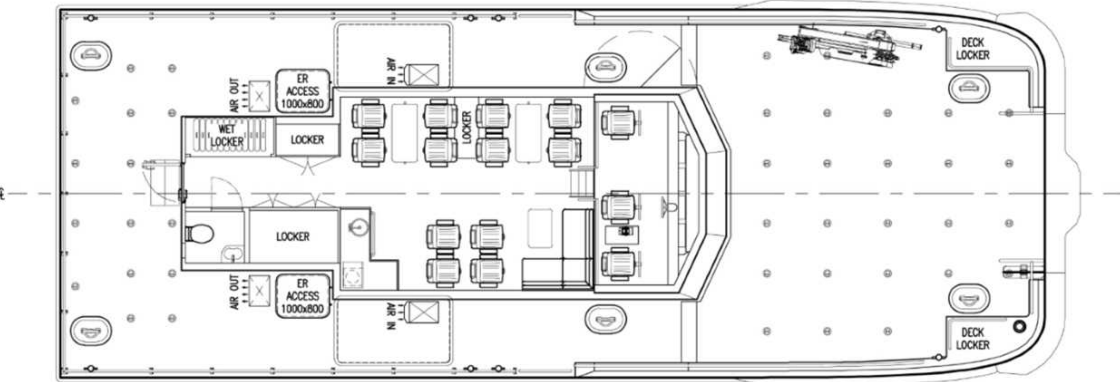
No Built



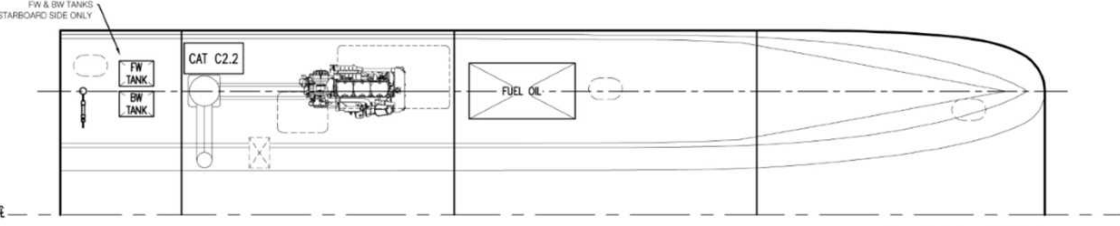
OUTBOARD PROFILE



INBOARD PROFILE



PLAN VIEW ON MAIN DECK



HALF PLAN VIEW ON HULL

Building 14, Shamrock Quay, William Street,
Southampton, Hampshire, SO14 5QL, United
Kingdom

Tel: +44 (0)23 8022 6655
E-mail: shipdesign.cs@bmtglobal.com
Web: www.bmt.org