



Principal Particulars

Length overall	38.5	metres
Length waterline	36.3	metres
Moulded beam	8.7	metres
Design draught	1.4	metres

Deadweight

Passengers	238	
Crew	8	
Fuel	7,100	litres
Fresh water	1,500	litres
Black water	1,500	litres
Maximum deadweight	34.5	tonnes

Performance & Range

Speed	27	knots
Service speed	25.5	knots

Machinery

Main engines	3 x CAT C32 ACERT 970W
Propulsors	3 x Fixed Pitch Propellers

Construction

Aluminium

Design Standard

Class Bureau Veritas Hull, Mach, High, Speed Craft – CAT A, Sea Area 2

Flag Singapore Flag & 2000 HSC CODE



Year launched
2014/2015

Number built
4

Owner
Horizon

Project No
NG922

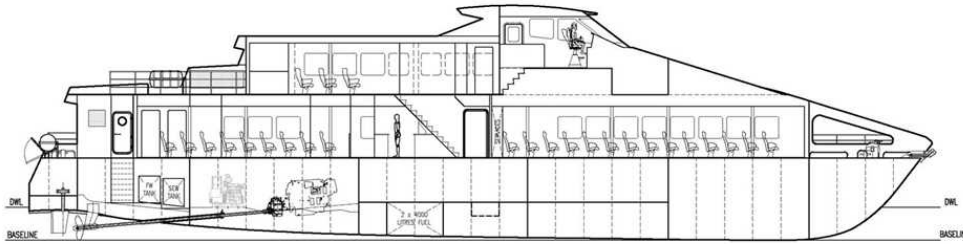
Builder
Penguin



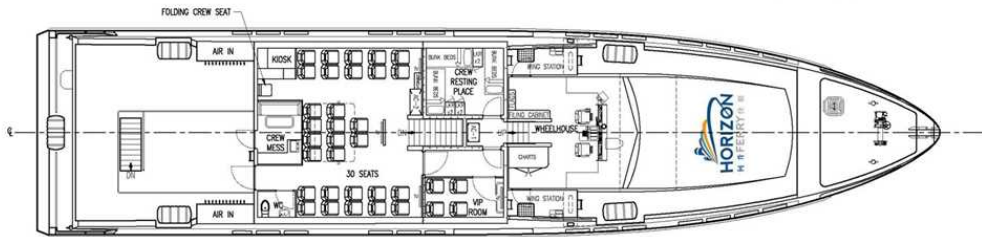
OUTBOARD PROFILE



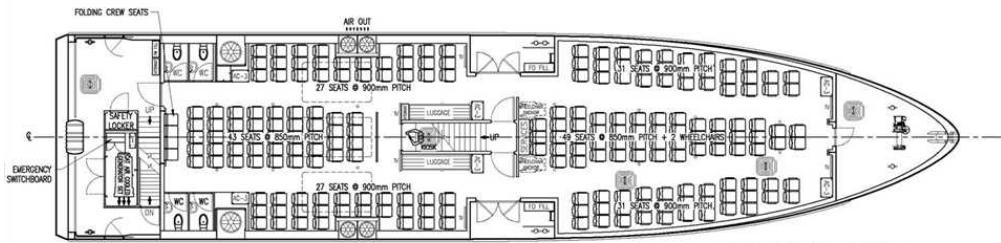
VIEW ON BOW



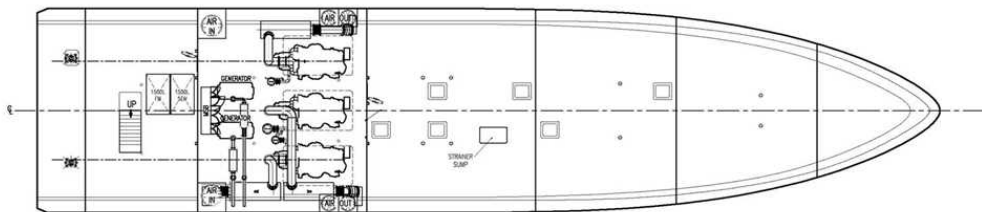
INBOARD PROFILE



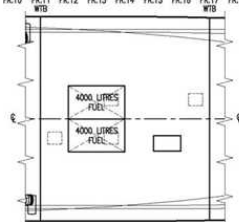
PLAN VIEW ON UPPER DECK



PLAN VIEW ON MAIN DECK



PLAN VIEW ON HULL



PLAN VIEW ON TANKS