



Principal Particulars

Length overall	26.3	metres
Length waterline	24.3	metres
Moulded beam	8.9	metres
Design draught	1.4	metres

Deadweight

Technicians	12	
Crew	4	
Cargo	17.5	tonnes
Fuel	29,000	litres
Fresh water	3,100	litres
Black water	500	litres
Maximum deadweight	30	tonnes

Performance & Range

Speed	27	knots
Service speed	25	knots

Machinery

Main engines	4 x Penta D13
Propulsors	4 x Volvo IPS 900

Construction

Aluminium

Design Standard

Class	DNV 1A1 HSLC, R1 Windfarm Service 1
Flag	JERSEY FLAG CAT 1, MCA Workboat Code



Year launched
2014

Number built
4

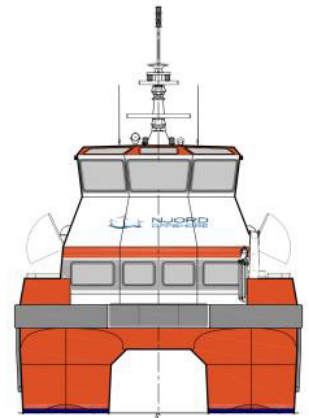
Owner
Njord Offshore

Project No
NG959

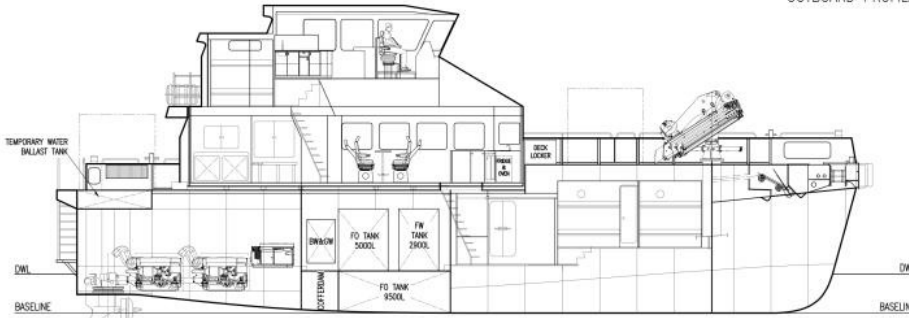
Builder
Strategic Marine



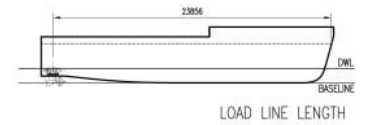
OUTBOARD PROFILE



VIEW ON BOW

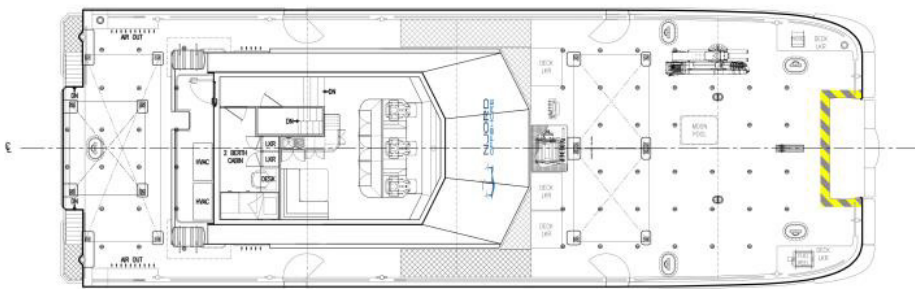


INBOARD PROFILE



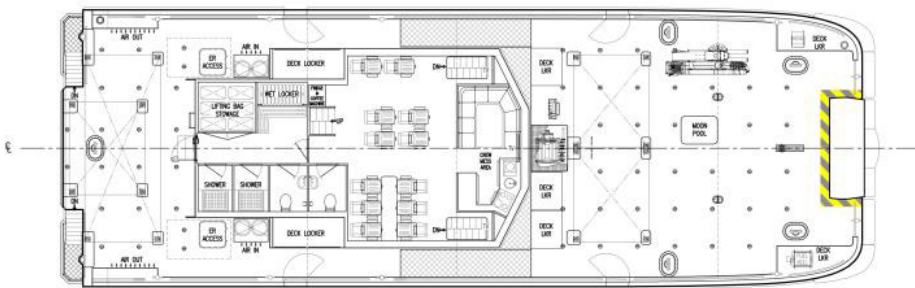
LOAD LINE LENGTH

FR.0	FR.1	FR.2	FR.3	FR.4	FR.5	FR.6	FR.7	FR.8	FR.9	FR.10	FR.11	FR.12	FR.13	FR.14	FR.15	FR.16	FR.17	FR.18	FR.19	FR.20	FR.21
TRANSOM	1200	2400	3600	4800	6000	7200	8400	9600	10800	12000	13200	14400	15600	16800	18000	19200	20400	21100	22300	23500	24700



PLAN VIEW BRIDGE

FR.0	FR.1	FR.2	FR.3	FR.4	FR.5	FR.6	FR.7	FR.8	FR.9	FR.10	FR.11	FR.12	FR.13	FR.14	FR.15	FR.16	FR.17	FR.18	FR.19	FR.20	FR.21
TRANSOM	1200	2400	3600	4800	6000	7200	8400	9600	10800	12000	13200	14400	15600	16800	18000	19200	20400	21100	22300	23500	24700



PLAN VIEW ON MAIN DECK

FR.0	FR.1	FR.2	FR.3	FR.4	FR.5	FR.6	FR.7	FR.8	FR.9	FR.10	FR.11	FR.12	FR.13	FR.14	FR.15	FR.16	FR.17	FR.18	FR.19	FR.20	FR.21
TRANSOM	1200	2400	3600	4800	6000	7200	8400	9600	10800	12000	13200	14400	15600	16800	18000	19200	20400	21100	22300	23500	24700



PLAN VIEW ON HULL