



## Principal Particulars

Length overall	217.1	metres
Length waterline	198.7	metres
Moulded beam	26.7	metres
Design draught	9	metres

## Deadweight

Crew	25	
Containers	1,430	TEU
Fuel	200,000	litres
Fresh water	10,000	litres
Maximum deadweight	14,800	tonnes

## Performance & Range

Speed	27	knots
Service speed	25	knots

## Machinery

Main engines	2 x Sulzer 16VZAV40S @ 12 MW	
Propulsors	LIPS Propeller	
Bow thruster	1x Ulstein@1x1000 kW	

## Construction

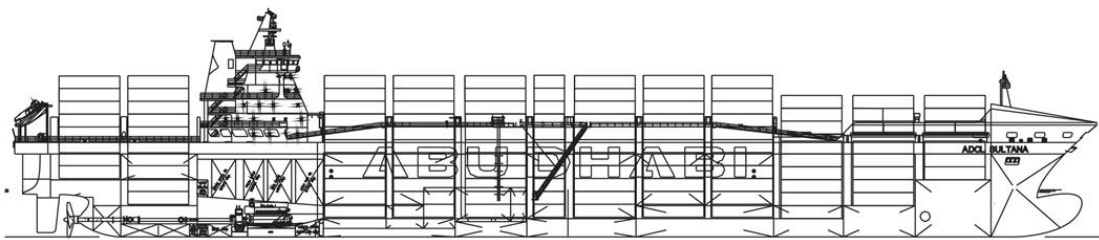
Steel

## Design Standard

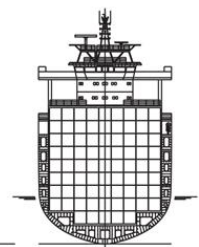
Class LR 100A1 Containership, IMO MSC / Circ.608 / Rev.1



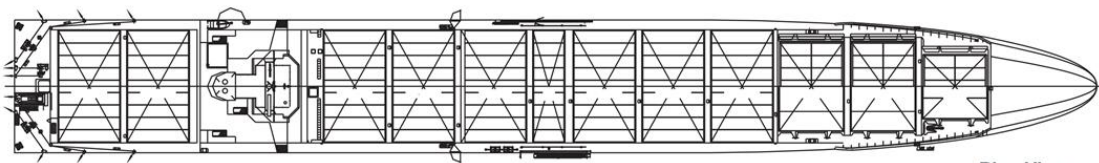
Year launched	Number built	Owner	Project No	Builder
1998	10	NORASIA	NG254	HDW / Jiangnan Shipyard



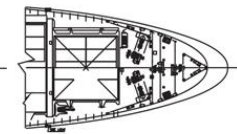
Inboard Profile



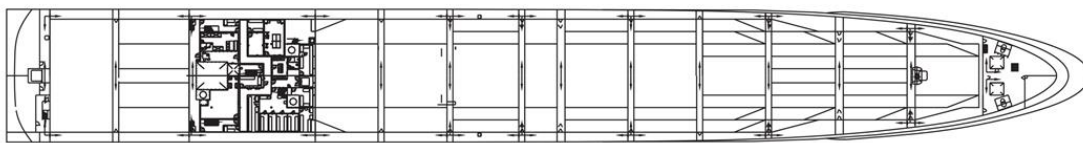
Midships Section



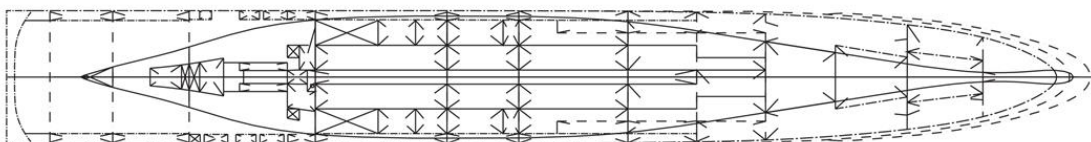
Plan View



Fore Mooring Deck



Walkway Plan View



Inner Plan View