

35m Ro-Ro Ferry



Principal Particulars

Length overall	35	metres
Length waterline	31.7	metres
Moulded beam	10.2	metres
Design draught	2.6	metres

Deadweight

Passengers	100	
Vehicles (cars)	16	
Crew	5	
Fuel	28,000	litres
Fresh water	6,000	litres
Maximum deadweight	160	tonnes

Performance & Range

Speed	12	knots
Service speed	11	knots

Machinery

Main engines	3 x MITSUBISHI 56R2 @ 630 kW
Propulsors	2 x Aquamaster Azimuthing Thrusters

Construction

Hull	Steel
Superstructure	Aluminium

Design Standard

Class	Lloyds Register of Shipping, MCA
--------------	----------------------------------

Owner

Shetland Island Council

Project No

NG355

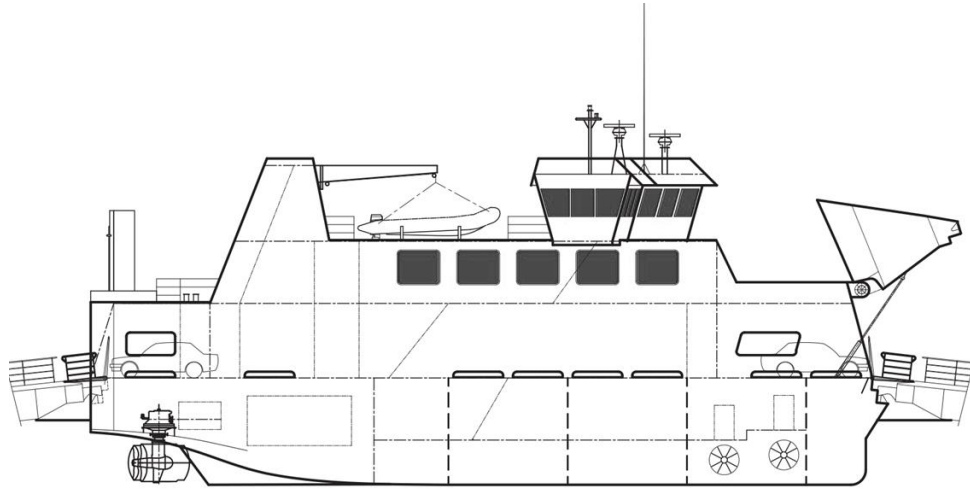
Builder

Northern Shipyard

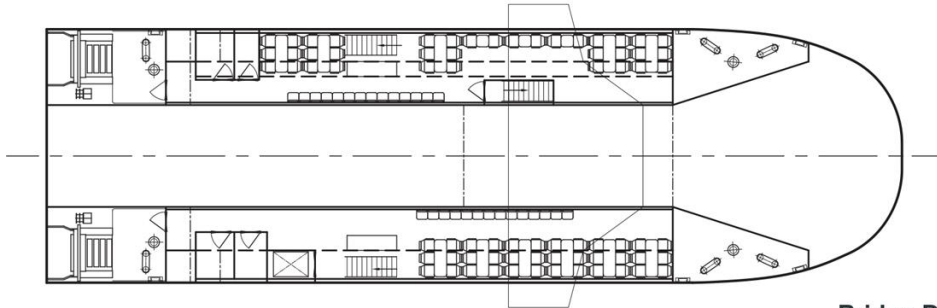
Year Launched

2001

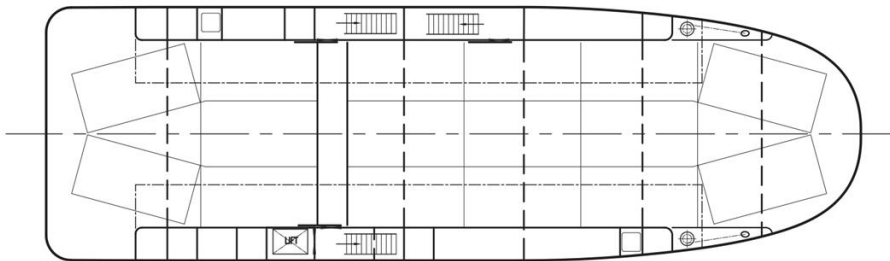
No Built



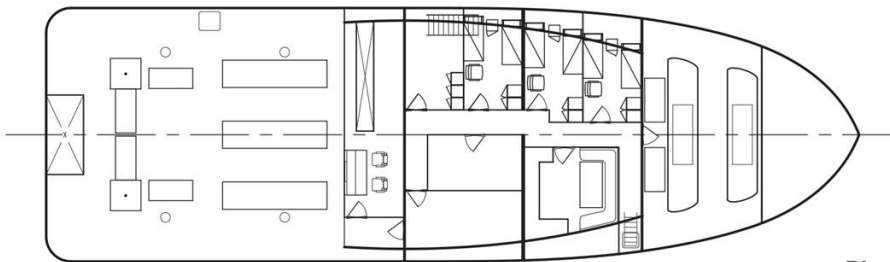
Outboard Profile



Bridge Deck Plan



Passenger Deck Plan



Plan on Waterline