



## Principal Particulars

Length overall	26	metres
Length waterline	25	metres
Moulded beam	7.1	metres
Design draught	1.3	metres

## Deadweight

Passengers	12	
Crew	3	
Fuel	5,675	litres
Fresh water	1,000	litres
Maximum deadweight	43	tonnes

## Performance & Range

Speed	13	knots
Service speed	12	knots

## Machinery

Main engines	2 x Detroit Diesel S60 @ 280 kW
Propulsors	2 x 36" Fixed Pitch Propeller

## Construction

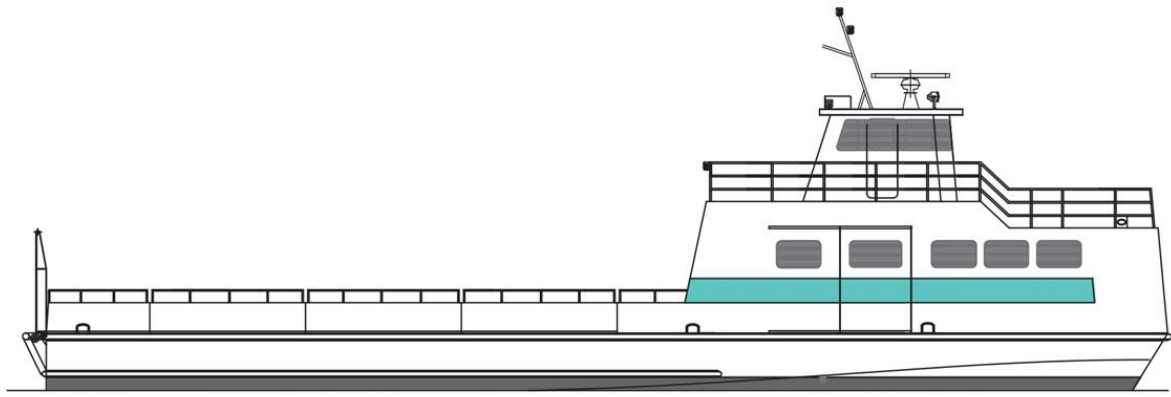
Aluminium

## Design Standard

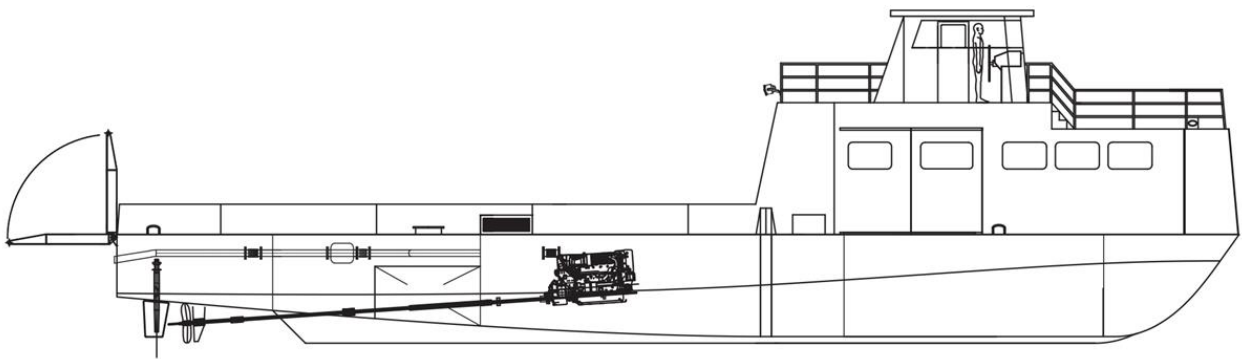
Class	USCG Subchapter T
Flag	USCG



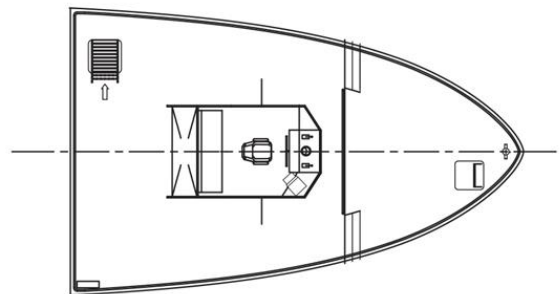
Year launched	Number built	Owner	Project No	Builder
2002	1	Fire Island	NG397	Derecktor Shipyards



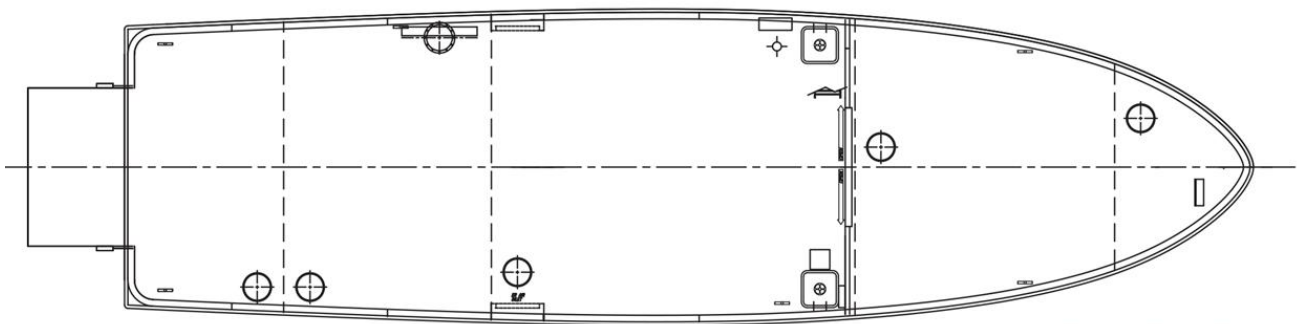
**Outboard Profile**



**Inboard Profile**



**Wheelhouse Deck Plan**



**Cargo Deck Plan**