



Principal Particulars

Length overall	35	metres
Length waterline	33.4	metres
Moulded beam	9.6	metres
Design draught	1.3	metres

Deadweight

Passengers	154	
Crew	10	
Fuel	28,500	litres
Fresh water	3,000	litres
Maximum deadweight	42.9	tonnes

Performance & Range

Speed	30	knots
Service speed	25	knots

Machinery

Main engines	2 x Cummins KTA50 M2 @ 1342 kW
Propulsors	2 x Hamilton HM 721

Construction

Aluminium

Design Standard

Class	INDIAN REGISTER OF SHIPPING IMO HSC 2000 CATEGORY B
-------	--



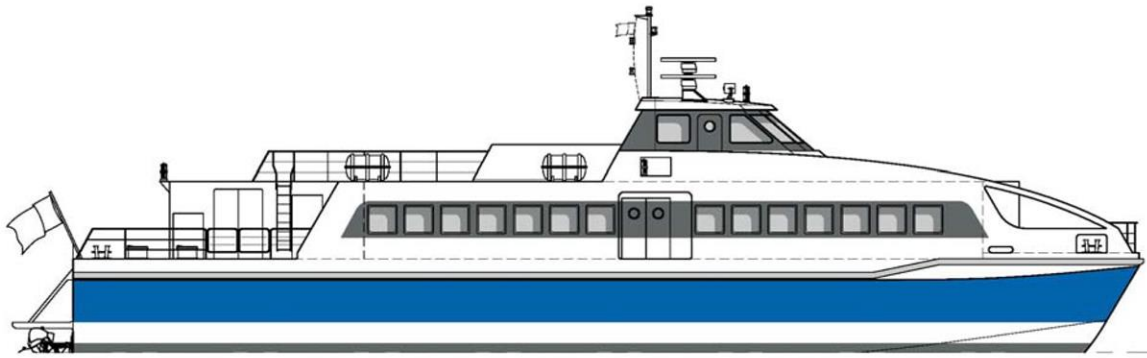
Year launched
2006

Number built
3

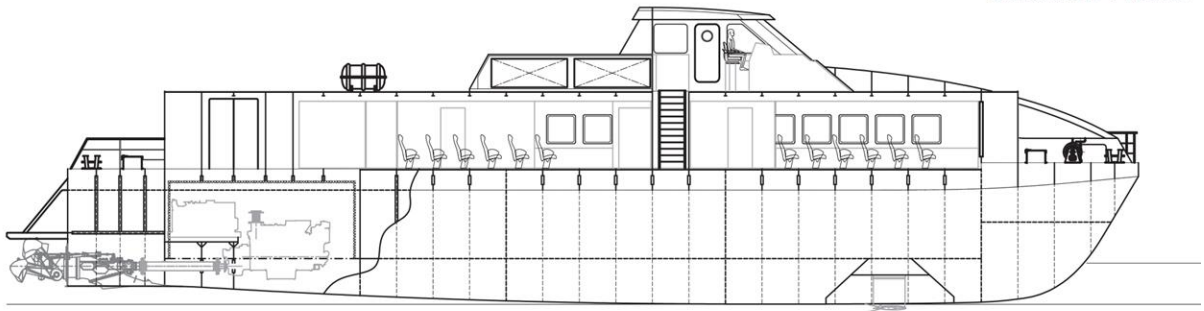
Owner
Shipping Corporation of
India

Project No
NG513

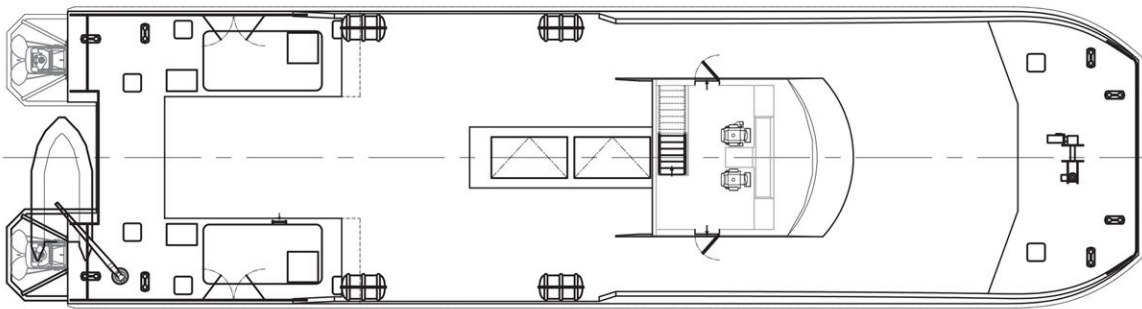
Builder
Penguin Shipyard



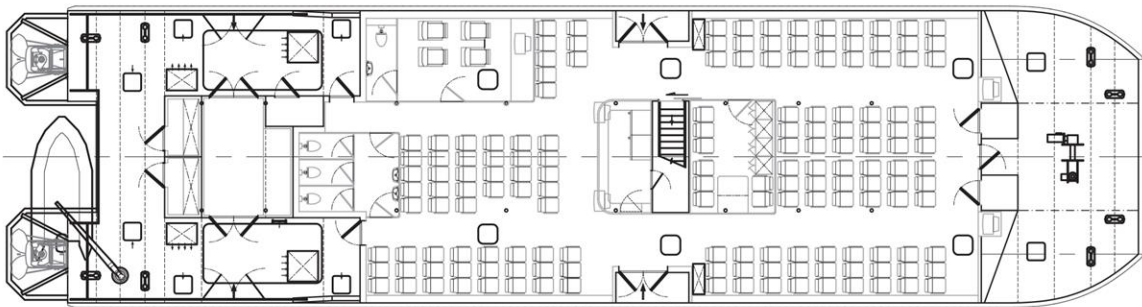
Outboard Profile



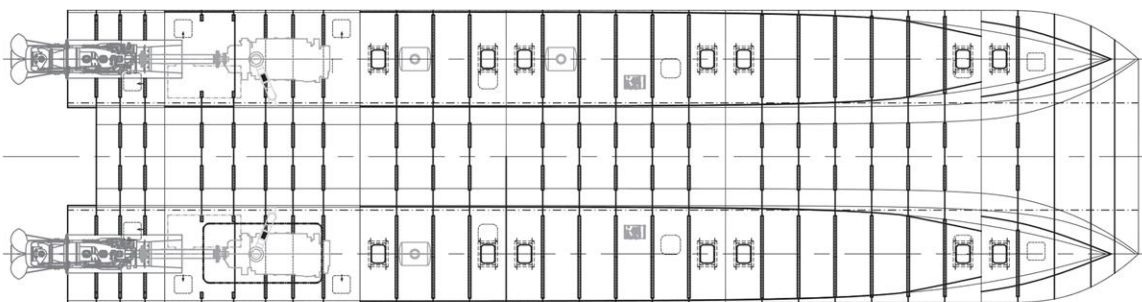
Inboard Profile



External Plan View



Passenger Deck Plan



Tank Deck Plan