



Principal Particulars

| | | |
|------------------|------|--------|
| Length overall | 37.8 | metres |
| Length waterline | 34 | metres |
| Moulded beam | 8.9 | metres |
| Design draught | 1.2 | metres |

Deadweight

| | | |
|--------------------|-------|--------|
| Passengers | 349 | |
| Crew | 4 | |
| Fuel | 6,700 | litres |
| Fresh water | 1,000 | litres |
| Black water | 1,000 | litres |
| Maximum deadweight | 42.9 | tonnes |

Performance & Range

| | | |
|---------------|----|-------|
| Speed | 34 | knots |
| Service speed | 33 | knots |

Machinery

| | |
|--------------|------------------------------|
| Main engines | 4 x MTU 12V2000 M70 @ 788 kW |
| Propulsors | 4 x Hamilton HM521 |

Construction

Aluminium

Design Standard

| | |
|-------|---|
| Class | USCG CFR 46, LR 100A1,SSC,Passenger Catamaran, HSC, G2, LMC |
|-------|---|

| | |
|------|------|
| Flag | USCG |
|------|------|



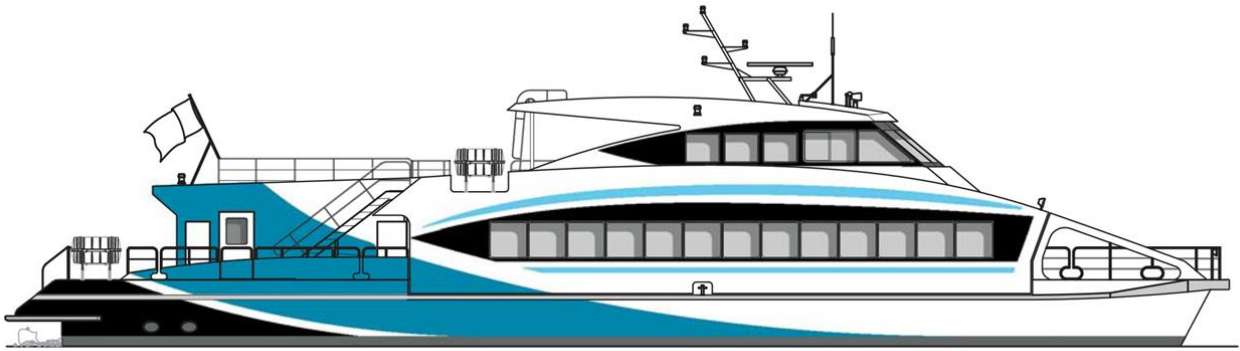
Year launched
2006

Number built
2

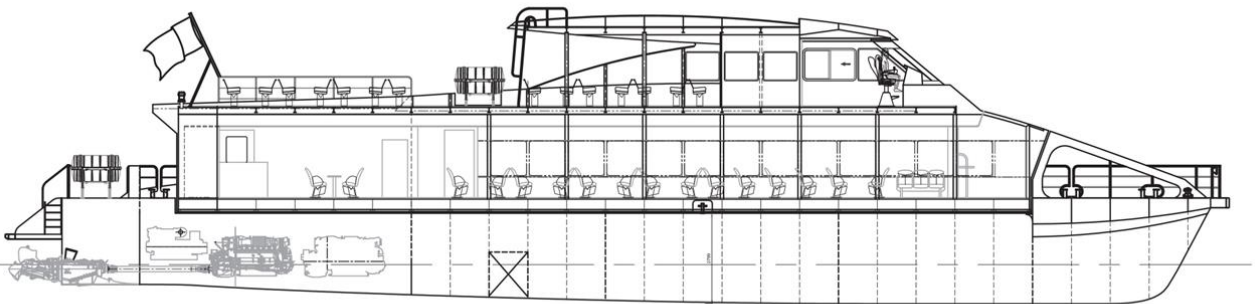
Owner
Bermuda Marine Ports & Services

Project No
NG532

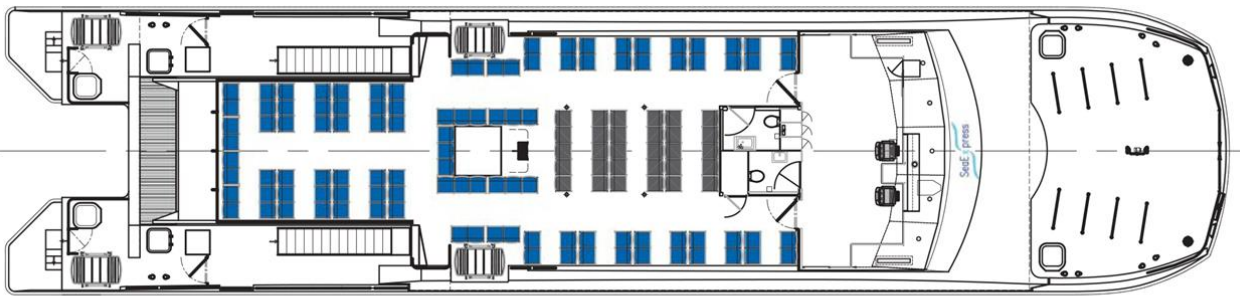
Builder
Derecktor Shipyards



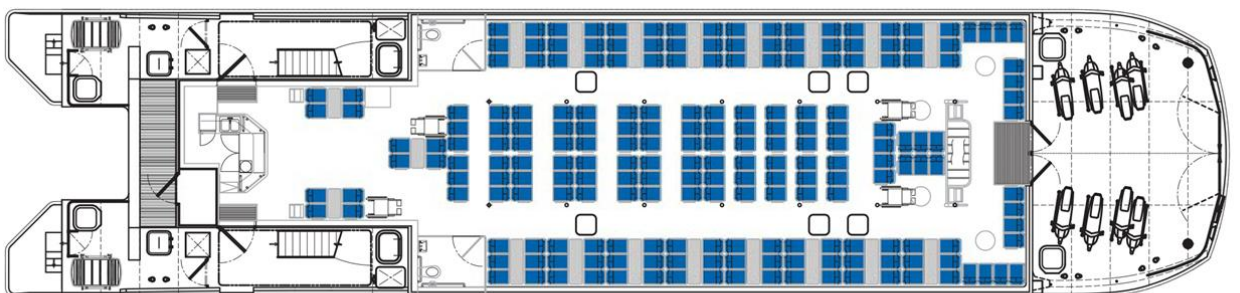
Outboard Profile



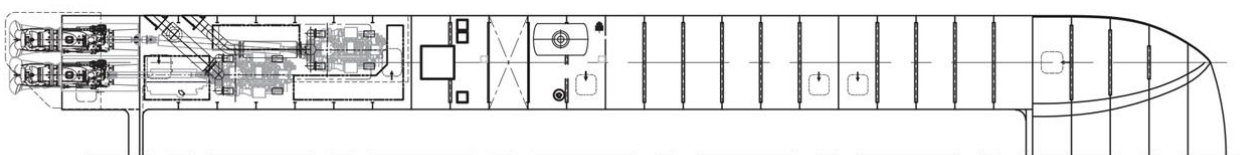
Inboard Profile



Upper Passenger Deck Plan



Lower Passenger Deck Plan



Tank Deck Plan