



## Principal Particulars

Length overall	26.2	metres
Length waterline	24.3	metres
Moulded beam	8.9	metres
Design draught	1.6	metres

## Deadweight

Passengers	24	
Crew	3	
Cargo	20	tonnes
Fuel	29,000	litres
Fresh water	3,000	litres
Black water	500	litres
Maximum deadweight	30	tonnes

## Performance & Range

Speed	27	knots
Service speed	25	knots

## Machinery

Main engines	2 x MAN D 2862 LE463 1029kW	
Propulsors	2 x SERVOGEAR CPP	

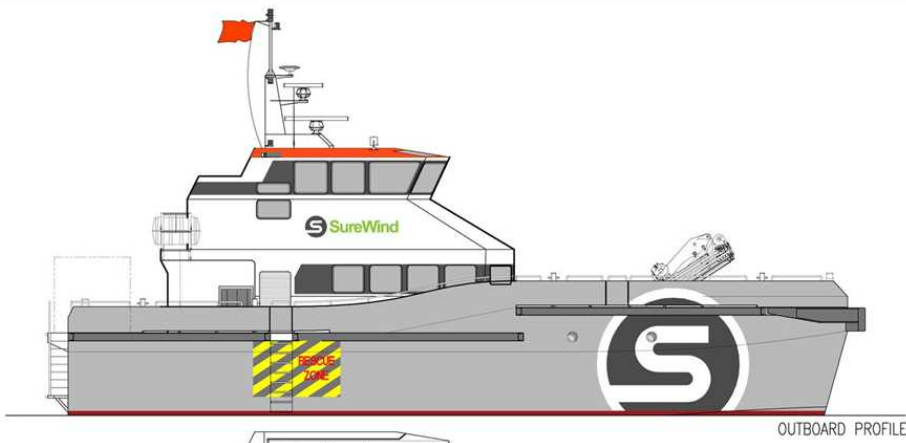
## Construction

Hull	Aluminium
Superstructure	Aluminium

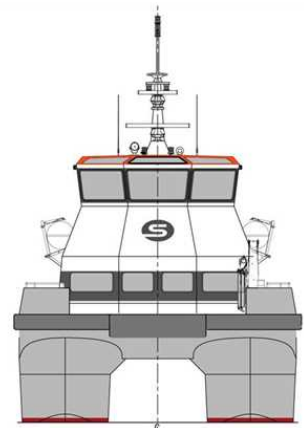
## Design Standard

Class	LRS 100A1, SSC, WORKBOAT, CATAMARAN, HSC, G3
Flag	MCA HS-OSC Code

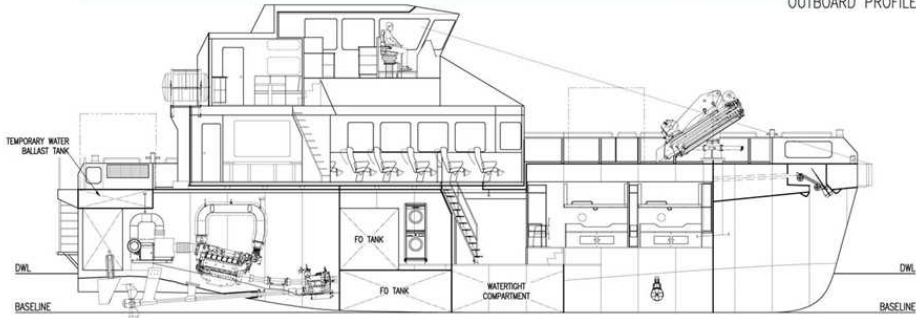




OUTBOARD PROFILE

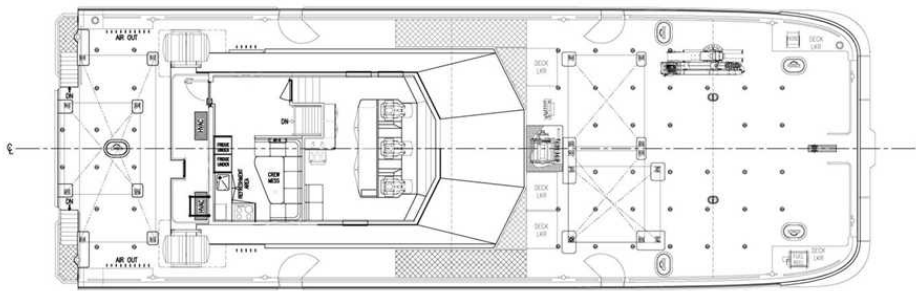


VIEW ON BOW



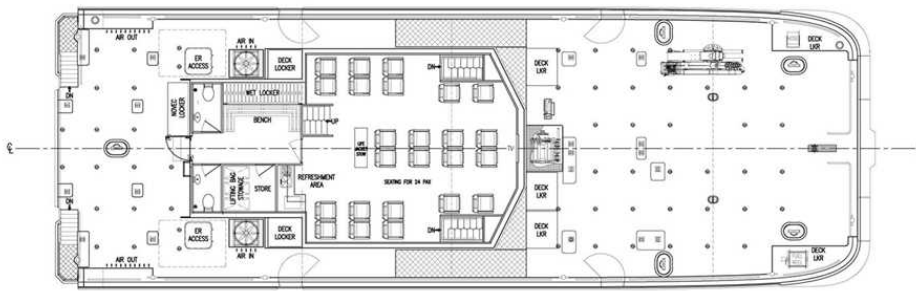
INBOARD PROFILE

FR.0	FR.1	FR.2	FR.3	FR.4	FR.5	FR.6	FR.7	FR.8	FR.9	FR.10	FR.11	FR.12	FR.13	FR.14	FR.15	FR.16	FR.17	FR.18	FR.19	FR.20	FR.21
TRANSOM	1200	2400	3600	4800	6000	7200	8400	9600	10800	12000	13200	14400	15600	16800	18000	19200	20400	21100	22300	23500	24700



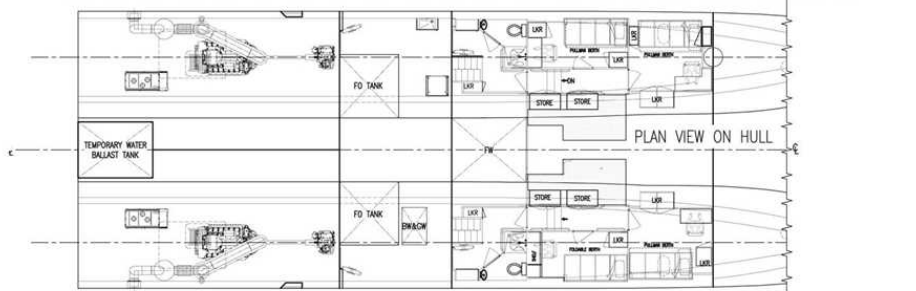
PLAN VIEW BRIDGE

FR.0	FR.1	FR.2	FR.3	FR.4	FR.5	FR.6	FR.7	FR.8	FR.9	FR.10	FR.11	FR.12	FR.13	FR.14	FR.15	FR.16	FR.17	FR.18	FR.19	FR.20	FR.21
TRANSOM	1200	2400	3600	4800	6000	7200	8400	9600	10800	12000	13200	14400	15600	16800	18000	19200	20400	21100	22300	23500	24700



PLAN VIEW ON MAIN DECK

FR.0	FR.1	FR.2	FR.3	FR.4	FR.5	FR.6	FR.7	FR.8	FR.9	FR.10	FR.11	FR.12	FR.13	FR.14	FR.15	FR.16	FR.17	FR.18	FR.19	FR.20	FR.21
TRANSOM	1200	2400	3600	4800	6000	7200	8400	9600	10800	12000	13200	14400	15600	16800	18000	19200	20400	21100	22300	23500	24700



PLAN VIEW ON HULL

