



## Principal Particulars

Length overall	40.9	metres
Length waterline	38.6	metres
Moulded beam	12	metres
Design draught	1.7	metres

## Deadweight

Passengers	260	
Vehicles (bicycles)	20	
Crew	3	
Cargo	3	tonnes
Fuel	5,530	litres
Fresh water	1,400	litres
Black water	1,000	litres
Maximum deadweight	29.1	tonnes

## Performance & Range

Speed	25	knots
Service speed	21	knots

## Machinery

Main engines	2 x CAT C32 970kW @ 2100
Propulsors	2 x Fixed Pitch Propellers

## Construction

Aluminium

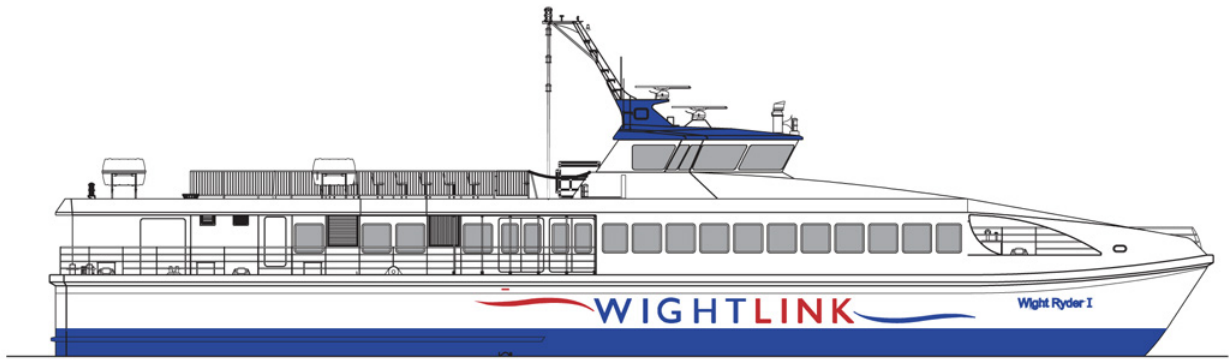
## Design Standard

Class Lloyds Register LR100 A1 SSC G3 MCA / HSC2000 CAT A

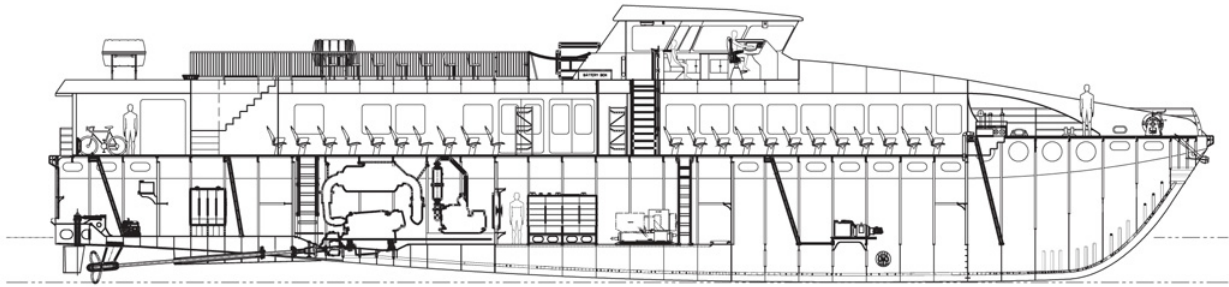
Flag MCA IMO HSC



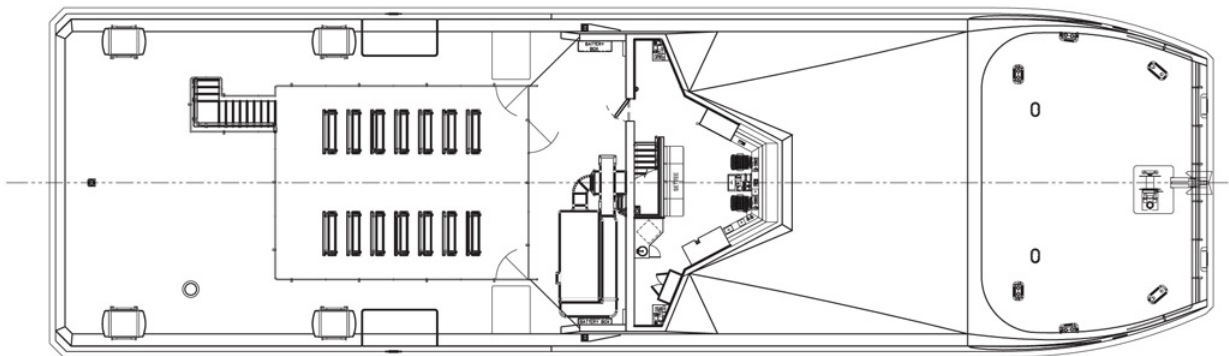
Year launched	Number built	Owner	Project No	Builder
2009	2	Wightlink	NG651	FBMA



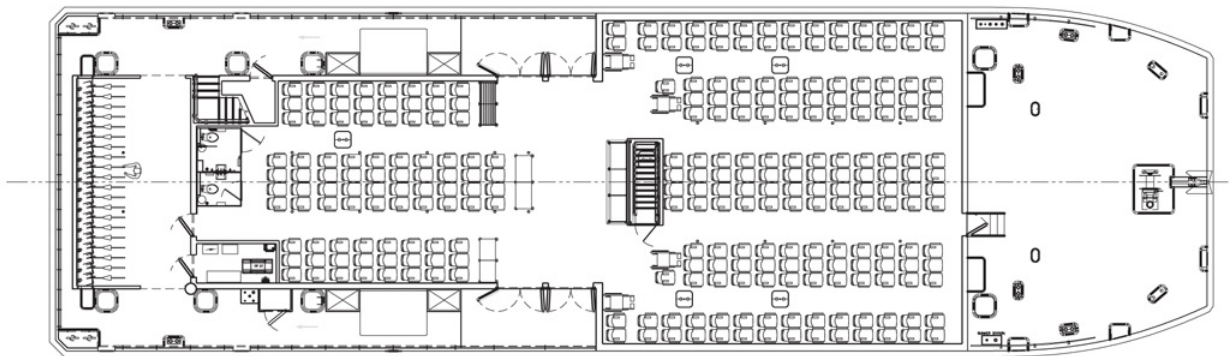
**Outboard Profile**



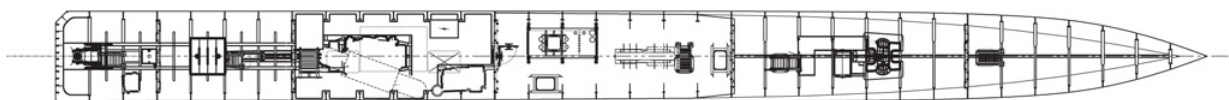
**Inboard Profile**



**Upper Deck**



**Main Deck**



**Below Deck**