



## Principal Particulars

Length overall	31.2	metres
Length waterline	25	metres
Moulded beam	6.7	metres
Design draught	1.3	metres

## Deadweight

Crew	13	
Fuel	12,750	litres
Fresh water	1,500	litres
Maximum deadweight	13.6	tonnes

## Performance & Range

Speed	45	knots
-------	----	-------

## Machinery

Main engines	2 x MTU 16V 4000 M90 @ 2720 kW	
Propulsors	2 x MJP 750 Waterjets	

## Construction

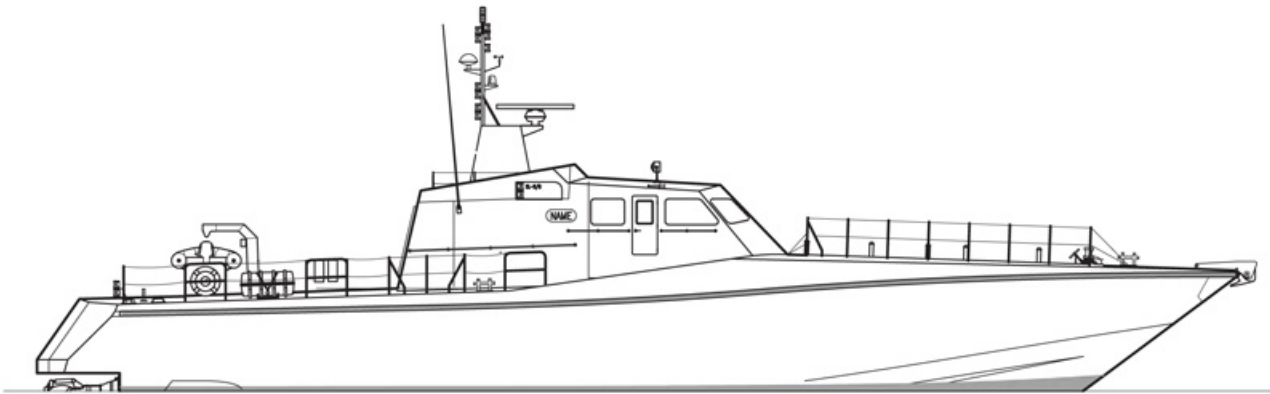
Composite

## Design Standard

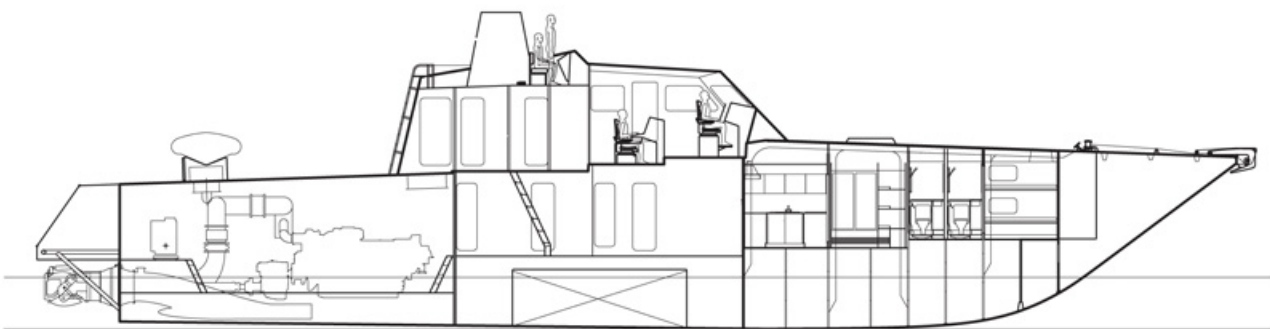
Class	DNV 1A1 HSLC Patrol R2
Flag	National Authority



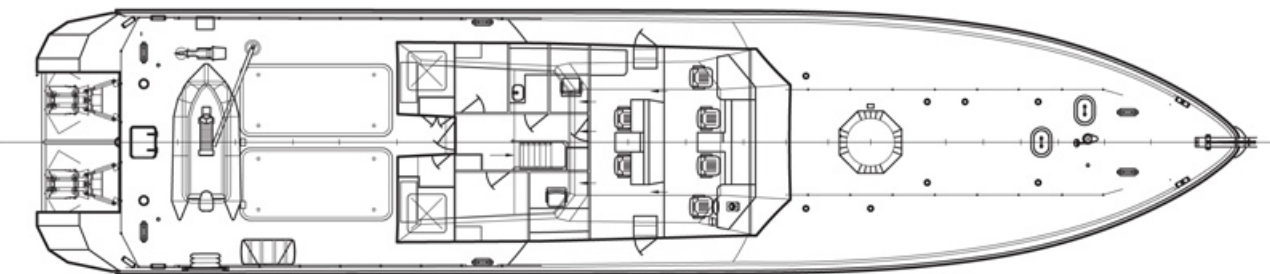
Year launched	Number built	Owner	Project No	Builder
2001	7	Turkish Coastguard	NG309	Yonca-Yurtsan-Onuk JV



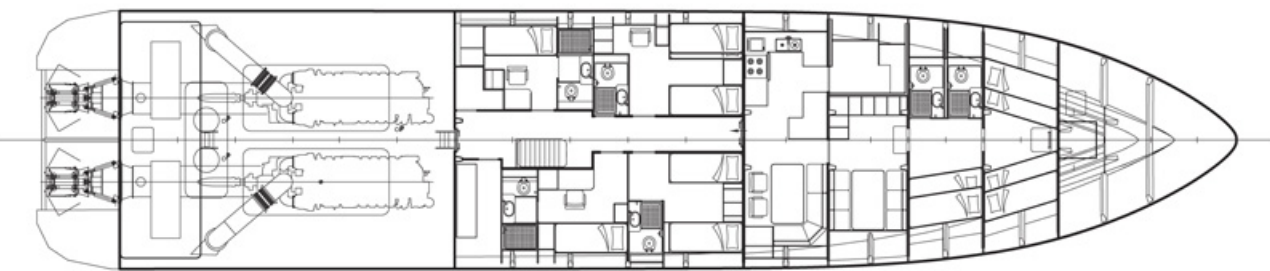
**Outboard Profile**



**Inboard Profile**



**Upper Deck Plan**



**Lower Deck Plan**