

## 34m Patrol Boat



### Principal Particulars

Length overall	34.3	metres
Length waterline	29.4	metres
Moulded beam	7.4	metres
Design draught	1.4	metres

### Deadweight

Officers	7	
Crew	17	
Fuel	20,000	litres
Fresh water	3,100	litres
Maximum deadweight	26.3	tonnes

### Performance & Range

Speed	30.5	knots
-------	------	-------

### Machinery

**Main engines**  
3 x MTU 12V 2000 M84 (3x1220kw)

**Propulsors**  
3 x Rolls Royce 50A3 waterjets

### Construction

Composite

### Design Standard

**Class**  
Turk Loydu

**Flag**  
Qatar Flag

### Owner

Qatar Coastguard

### Project No

NG956

### Builder

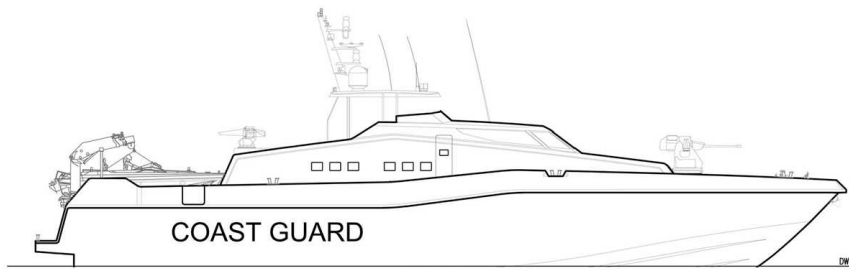
Ares Shipyards Ltd

### Year Launched

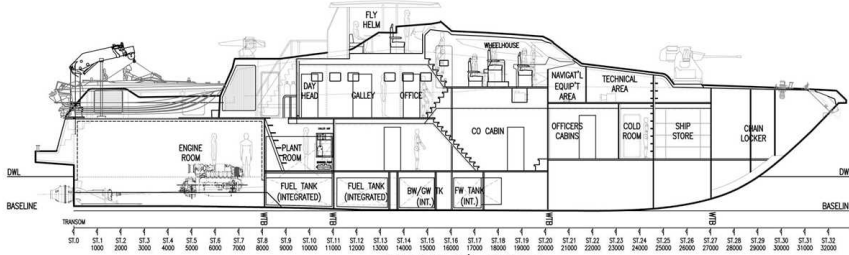
2016

### No Built

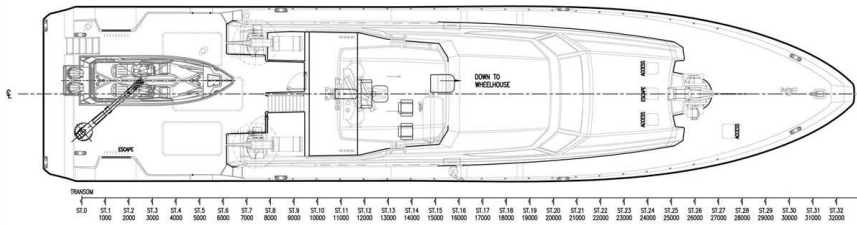
10 under construction



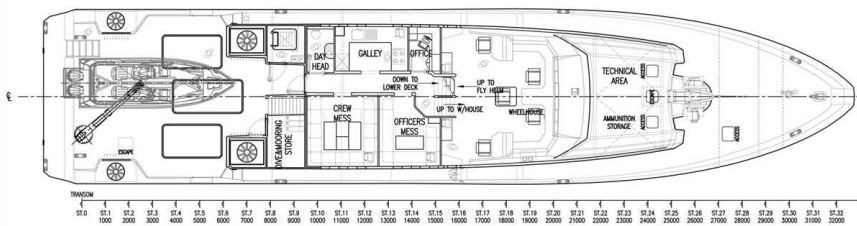
OUTBOARD PROFILE  
LOOKING TO PORT



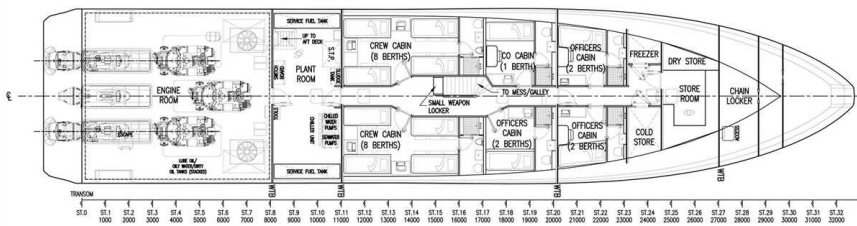
INBOARD C/L PROFILE  
LOOKING TO PORT



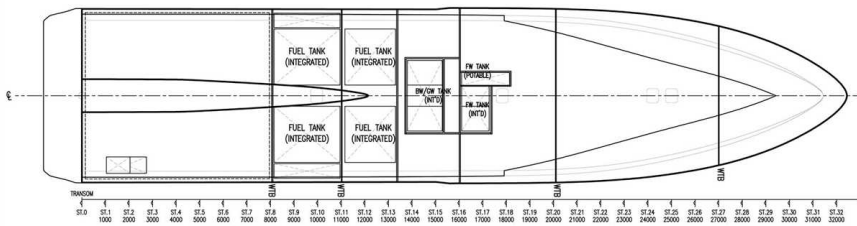
TOP VIEW



MAIN DECK



LOWER DECK



TANK DECK