



Principal Particulars

Length overall	79.9	metres
Length waterline	73	metres
Moulded beam	21	metres
Design draught	2.9	metres

Deadweight

Crew	30	
Fuel	595,000	litres
Fresh water	8,800	litres
Maximum deadweight	700	tonnes

Performance & Range

Speed	55	knots
Service speed	50	knots

Machinery

Main engines	2 x MTU 16V 595 TE90 4,320kW 2 x GE LM2500 Gas Turbines 22.4mW	
Propulsors	2 x Hamilton HM651 Waterjets	

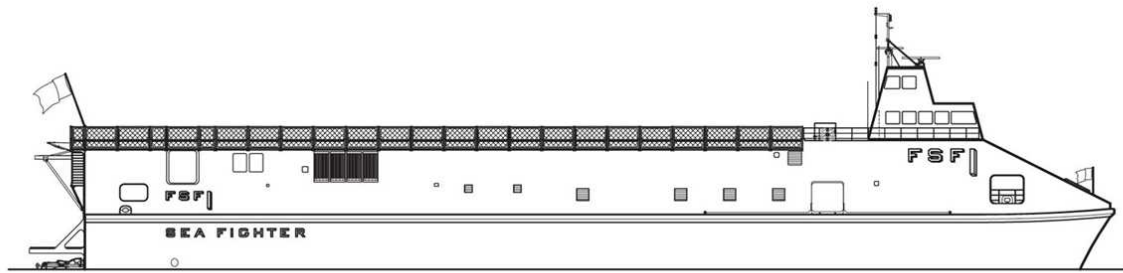
Construction

Aluminium

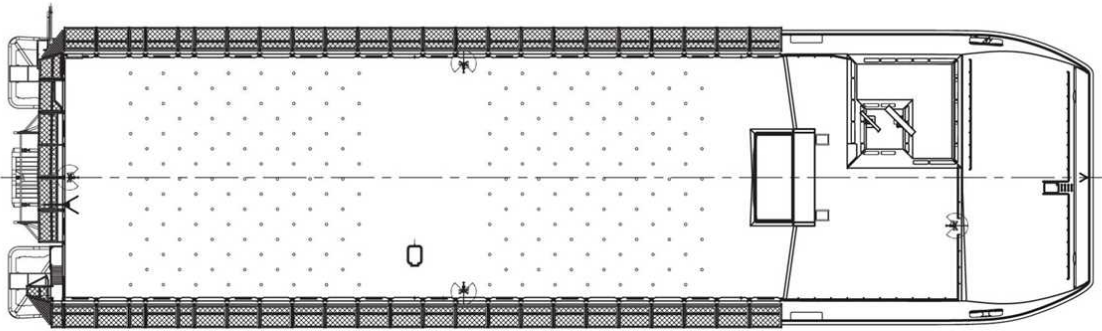
Design Standard

Class	A1 HSC Naval Craft OE, AMS, R2-S
Flag	IMO HSC 2000 Cargo Vessel

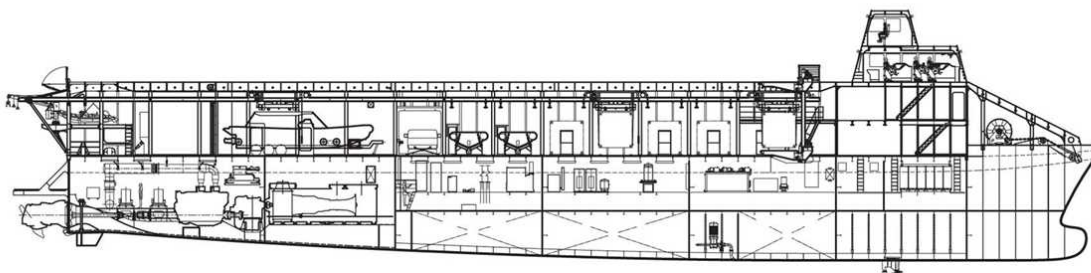




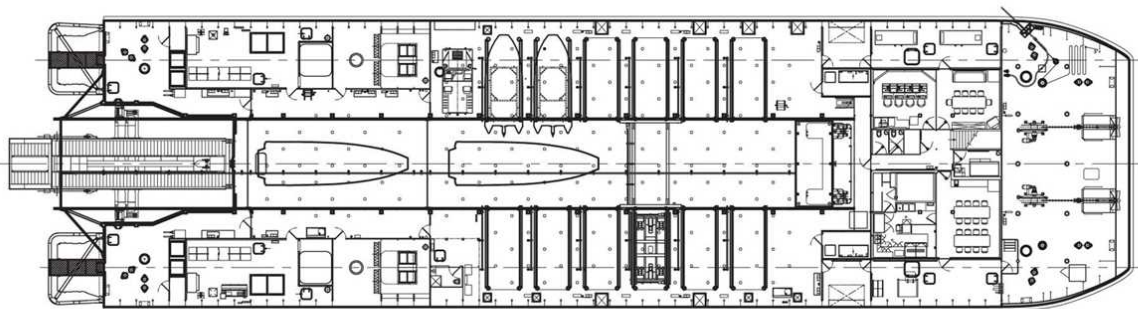
Outboard Profile



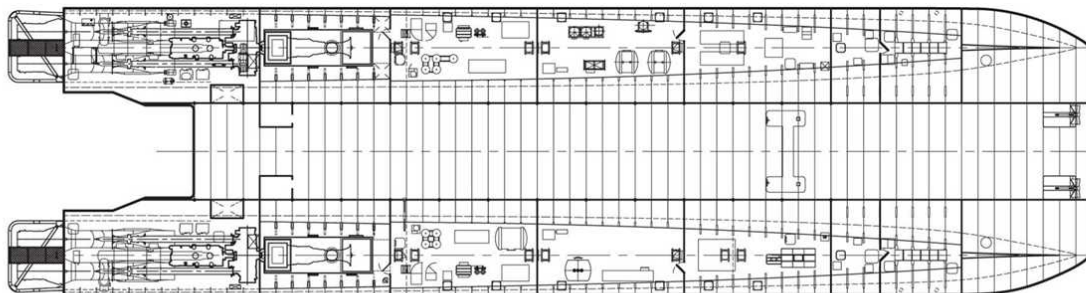
Flight Deck Plan



Inboard Deck Plan



Vehicle Deck Plan



Tank Deck Plan