



## Principal Particulars

Length overall	27.4	metres
Length waterline	23.9	metres
Moulded beam	8	metres
Design draught	1.3	metres

## Deadweight

Technicians	24	
Crew	3	
Cargo	18	tonnes
Fuel	25,000	litres
Fresh water	1,000	litres
Black water	1,000	litres
Maximum deadweight	30	tonnes

## Performance & Range

Speed	27.5	knots
Service speed	25.5	knots

## Machinery

Main engines	2 x MAN D2862 LE463 (1029kW)
Propulsors	2 x Hamilton HM651 Water jets

## Construction

Aluminium

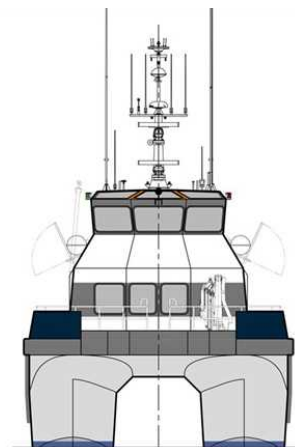
## Design Standard

Class	BV Hull Mach 'Wind Farm Service Ship - S1' Sea Area 2
Flag	UK MCA - The Workboat Code - Area Category 1

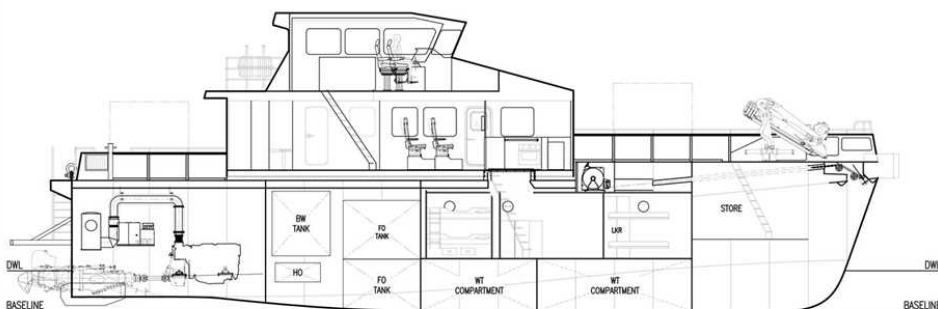




OUTBOARD PROFILE

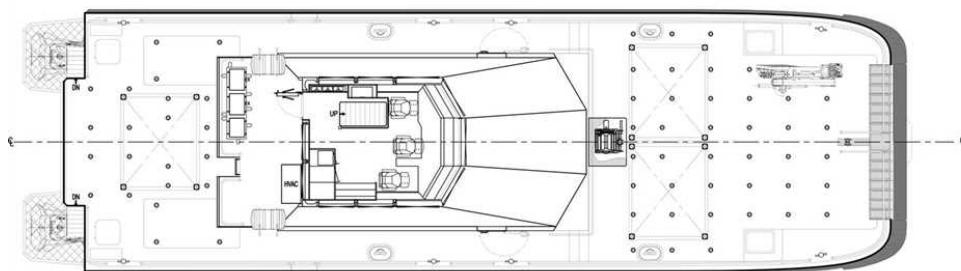


VIEW ON BOW



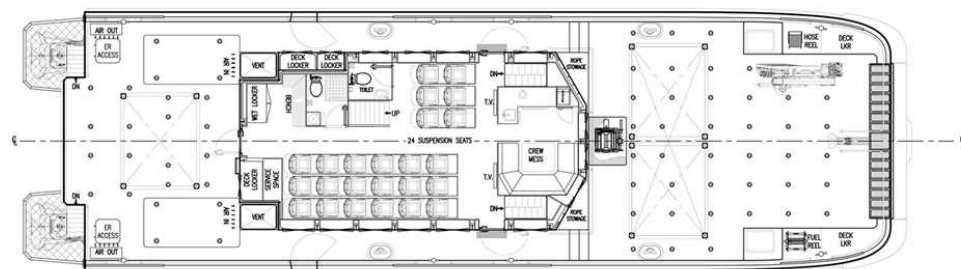
INBOARD PROFILE

TRANSOM												WTB				WTB				WTB				INBOARD P			
FR.0	FR.1	FR.2	FR.3	FR.4	FR.5	FR.6	FR.7	FR.8	FR.9	FR.10	FR.11	FR.12	FR.13	FR.14	FR.15	FR.16	FR.17	FR.18	FR.19	FR.20							
1200	2400	3600	4800	6000	7200	8400	9600	10800	12000	13200	14400	15600	16800	18000	19200	20400	21600	22800	24000								



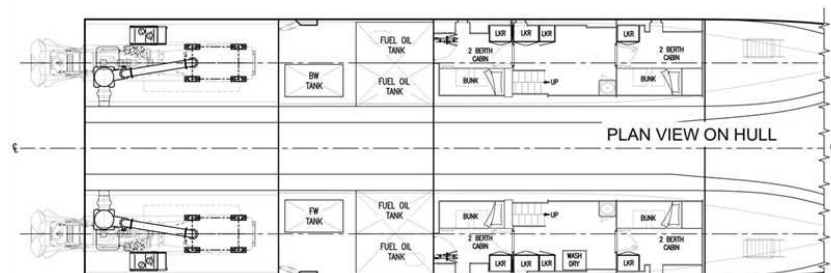
PLAN VIEW BRIDGE

TRANSOM																					WTB		WTB										WTB		PART VIEW	
FR.0	FR.1	FR.2	FR.3	FR.4	FR.5	FR.6	FR.7	FR.8	FR.9	FR.10	FR.11	FR.12	FR.13	FR.14	FR.15	FR.16	FR.17	FR.18	FR.19	FR.20																
1200	2400	3600	4800	6000	7200	8400	9600	10800	12000	13200	14400	15600	16800	18000	19200	20400	21600	22800	24000																	



PLAN VIEW ON MAIN DECK

PLAN VIEW ON MAP																					
TRANSOM						WTS		WTS				WTS									
FR.0	FR.1	FR.2	FR.3	FR.4	FR.5	FR.6	FR.7	FR.8	FR.9	FR.10	FR.11	FR.12	FR.13	FR.14	FR.15	FR.16	FR.17	FR.18	FR.19	FR.20	
1200	2400	3600	4800	6000	7200	8400	9600	10800	12000	13200	14400	15600	16800	18000	19200	20400	21600	22800	24000		



PLAN VIEW ON HULL