



## Principal Particulars

|                  |      |        |
|------------------|------|--------|
| Length overall   | 19.4 | metres |
| Length waterline | 18.8 | metres |
| Moulded beam     | 7    | metres |
| Design draught   | 1    | metres |

## Deadweight

|                    |       |        |
|--------------------|-------|--------|
| Technicians        | 12    |        |
| Crew               | 3     |        |
| Cargo              | 6.0   | tonnes |
| Fuel               | 5,000 | litres |
| Fresh water        | 500   | litres |
| Black water        | 500   | litres |
| Maximum deadweight | 12.7  | tonnes |

## Performance & Range

|       |    |       |
|-------|----|-------|
| Speed | 26 | knots |
|-------|----|-------|

## Machinery

|              |                            |
|--------------|----------------------------|
| Main engines | 2 x MTU10V2000M72 (900 kW) |
| Propulsors   | 2 x Rolls Royce FF 600     |

## Construction

Aluminium

## Design Standard

|       |                                    |
|-------|------------------------------------|
| Class | DNV 1A1 HSLC R2 Windfarm Service 1 |
| Flag  | MGN 280 UK MCA, Cat 2              |



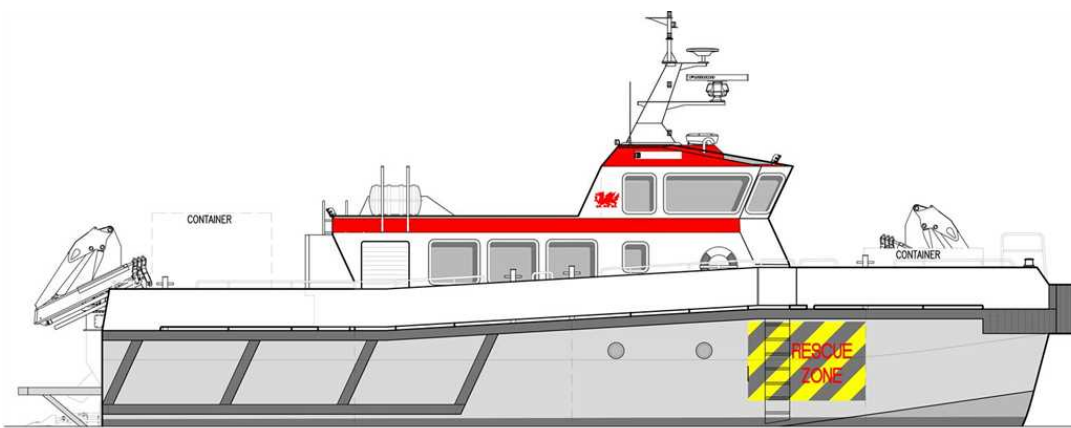
Year launched  
2014

Number built  
1

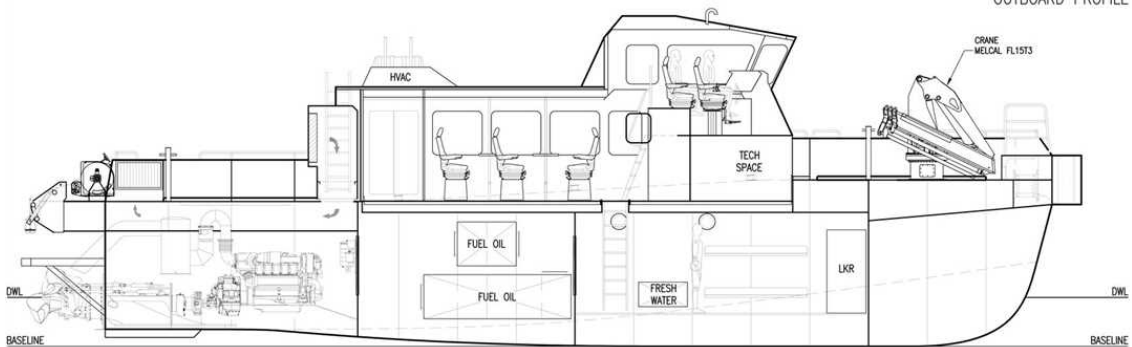
Owner  
Turbine Transfers

Project No  
NG770

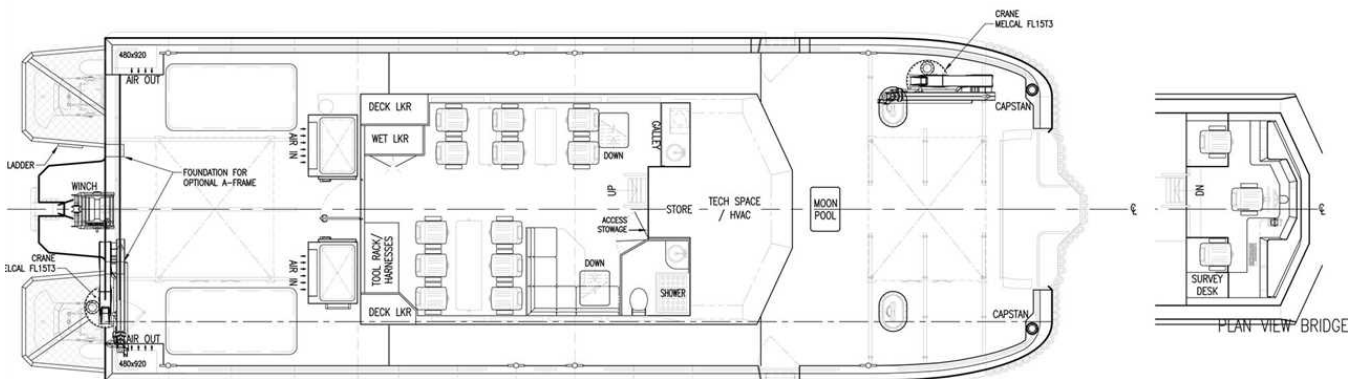
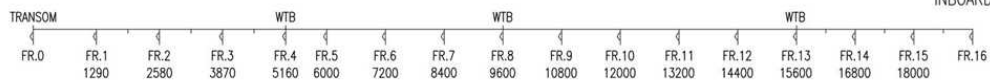
Builder  
Holyhead Marine



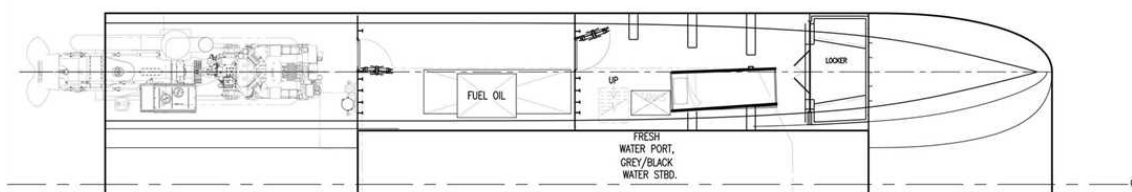
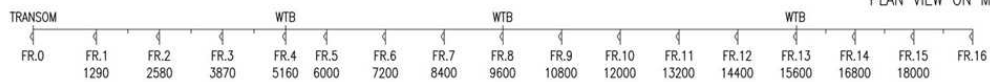
OUTBOARD PROFILE



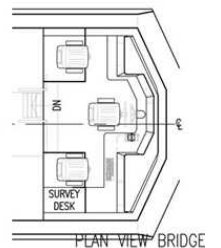
INBOARD PROFILE



PLAN VIEW ON MAIN DECK



HALF PLAN VIEW ON HULL



PLAN VIEW BRIDGE