



## Principal Particulars

Length overall	26.9	metres
Length waterline	24.2	metres
Moulded beam	9	metres
Design draught	1.3	metres

## Deadweight

Passengers	24	
Crew	4	
Fuel	52,000	litres
Fresh water	3,000	litres
Black water	1,500	litres
Maximum deadweight	45	tonnes

## Performance & Range

Speed	27	knots
Service speed	25	knots

## Machinery

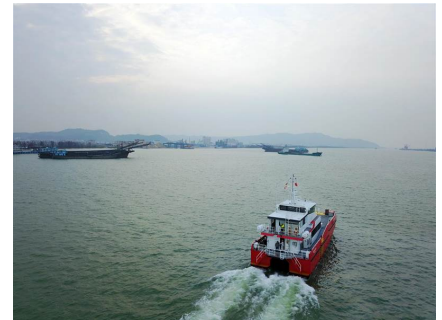
Main engines 4x VOLVO PENTA IPS 900

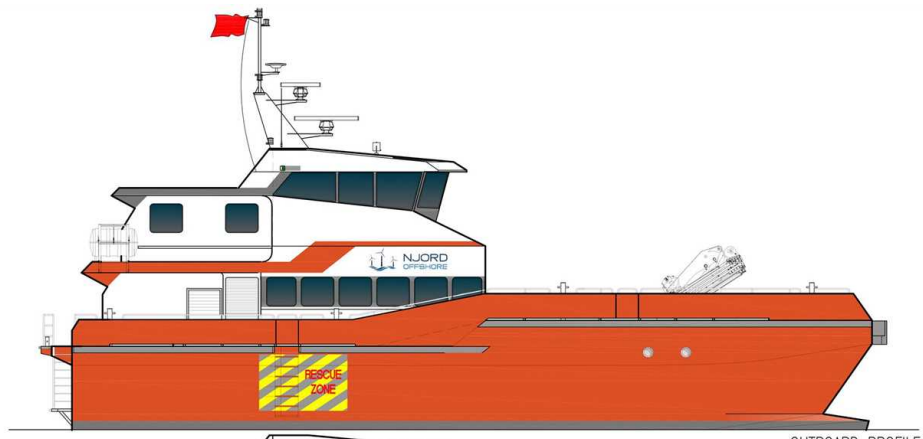
## Construction

Aluminium

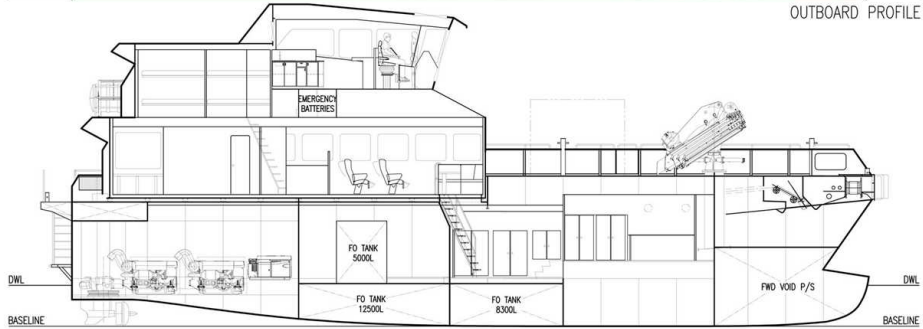
## Design Standard

Class	24 OFFSHORE SERVICE / INDUSTRIAL PERSONNEL OF WHICH 12 CAN BE PASSENGERS: LR 100A1, SSC, WORKBOAT, CATAMARAN, HSC, G3, MCH
Flag	JERSEY (HSC-OSC)



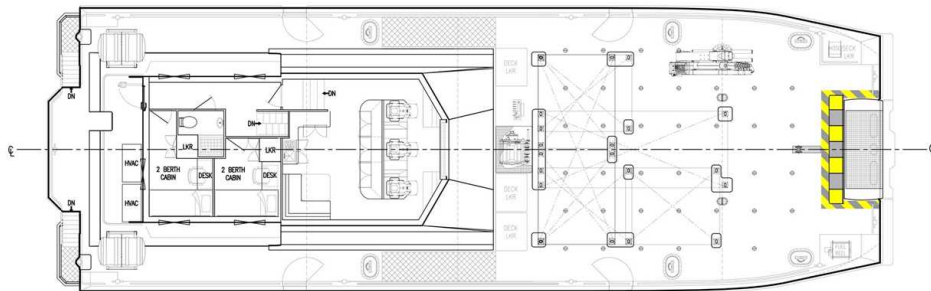


OUTBOARD PROFILE



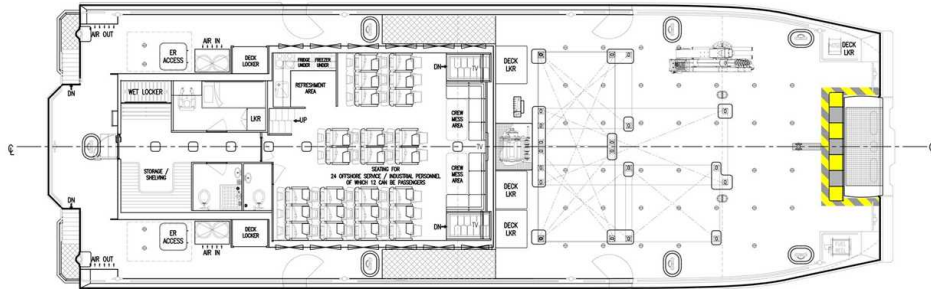
INBOARD PROFILE

GA	OB	1A	WTB					WTB					WTB								
FR.0	FR.1	FR.2	FR.3	FR.4	FR.5	FR.6	FR.7	FR.8	FR.9	FR.10	FR.11	FR.12	FR.13	FR.14	FR.15	FR.16	FR.17	FR.18	FR.19	FR.20	FR.21
TRANSOM	1200	2400	3600	4800	6000	7200	8400	9600	10800	12000	13200	14400	15600	16800	18000	19200	20400	21470	22670	23870	25070



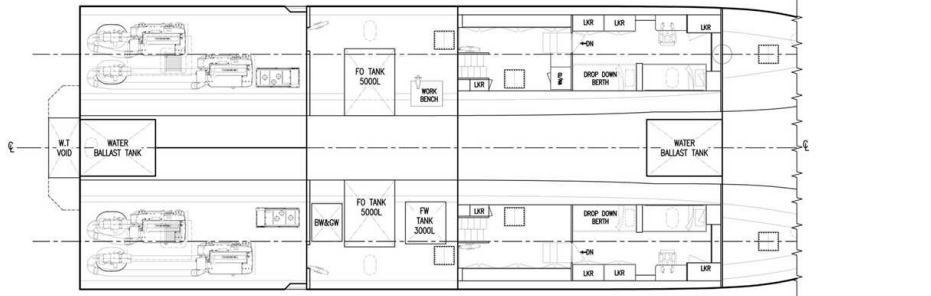
PLAN VIEW BRIDGE

GA	OB	1A	WTB					WTB					WTB								
FR.0	FR.1	FR.2	FR.3	FR.4	FR.5	FR.6	FR.7	FR.8	FR.9	FR.10	FR.11	FR.12	FR.13	FR.14	FR.15	FR.16	FR.17	FR.18	FR.19	FR.20	FR.21
TRANSOM	1200	2400	3600	4800	6000	7200	8400	9600	10800	12000	13200	14400	15600	16800	18000	19200	20400	21470	22670	23870	25070



PLAN VIEW ON MAIN DECK

GA	OB	1A	WTB					WTB					WTB								
FR.0	FR.1	FR.2	FR.3	FR.4	FR.5	FR.6	FR.7	FR.8	FR.9	FR.10	FR.11	FR.12	FR.13	FR.14	FR.15	FR.16	FR.17	FR.18	FR.19	FR.20	FR.21
TRANSOM	1200	2400	3600	4800	6000	7200	8400	9600	10800	12000	13200	14400	15600	16800	18000	19200	20400	21470	22670	23870	25070



PLAN VIEW ON HULL