



Principal Particulars

Length overall	27.5	metres
Length waterline	24.3	metres
Moulded beam	8.9	metres
Design draught	1.5	metres

Deadweight

Passengers	24	
Crew	4	
Cargo	20	tonnes
Fuel	35,000	litres
Fresh water	3,000	litres
Black water	1,500	litres
Maximum deadweight	30	tonnes

Performance & Range

Speed	28.0	knots
Service speed	26.0	knots

Machinery

Main engines	4x SCANIA D16 076M @ 662 kW
Propulsors	4x HAMILTON HM521 Waterjets

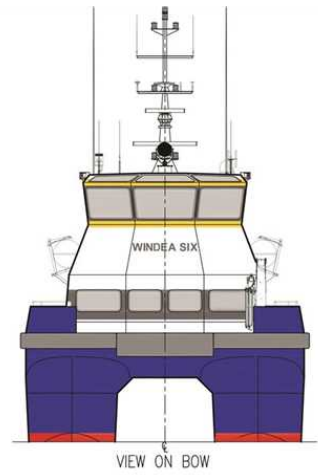
Construction

Aluminium

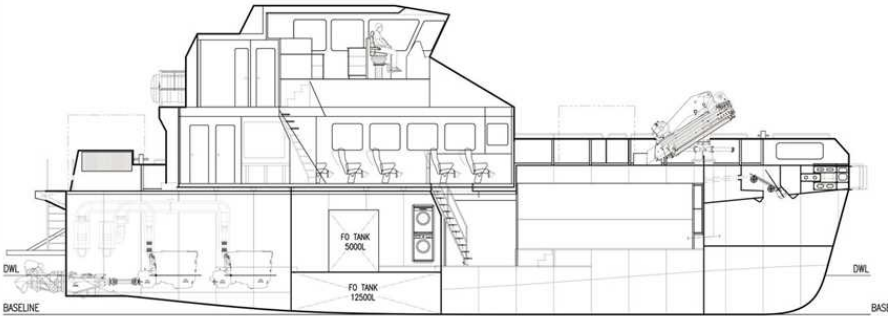
Design Standard

Class	LRS100A1, SSC, WORKBOAT, CATAMARAN, HSC, G3 MCH
Flag	BGV HS-OSC



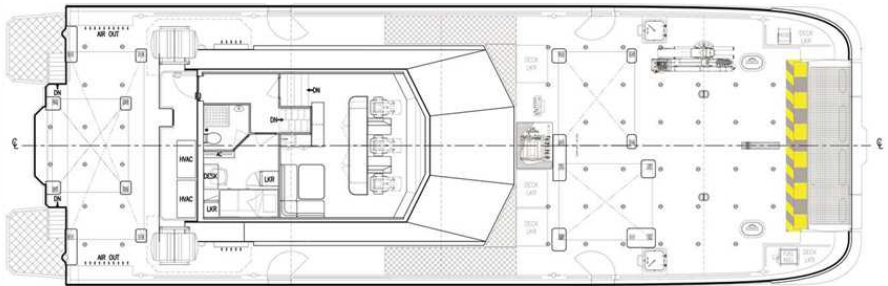


VIEW ON BOW



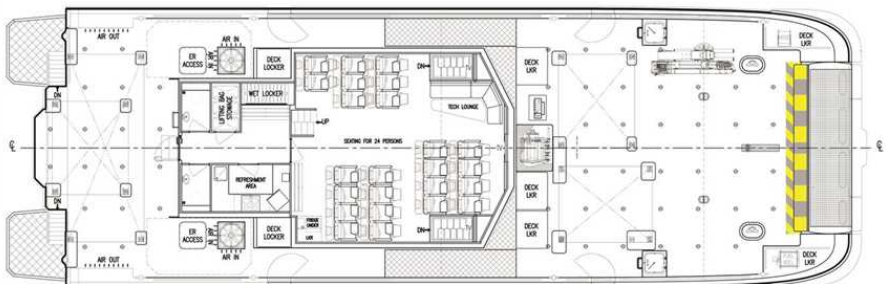
INBOARD PROFILE

FR.0	FR.1	FR.2	FR.3	FR.4	FR.5	FR.6	FR.7	FR.8	FR.9	FR.10	FR.11	FR.12	FR.13	FR.14	FR.15	FR.16	FR.17	FR.18	FR.19	FR.20	FR.21
TRANSOM	1200	2400	3600	4800	6000	7200	8400	9600	10800	12000	13200	14400	15600	16800	18000	19200	20400	21100	22300	23500	24700



PLAN VIEW BRIDGE

FR.0	FR.1	FR.2	FR.3	FR.4	FR.5	FR.6	FR.7	FR.8	FR.9	FR.10	FR.11	FR.12	FR.13	FR.14	FR.15	FR.16	FR.17	FR.18	FR.19	FR.20	FR.21
TRANSOM	1200	2400	3600	4800	6000	7200	8400	9600	10800	12000	13200	14400	15600	16800	18000	19200	20400	21100	22300	23500	24700



PLAN VIEW ON MAIN DECK

FR.0	FR.1	FR.2	FR.3	FR.4	FR.5	FR.6	FR.7	FR.8	FR.9	FR.10	FR.11	FR.12	FR.13	FR.14	FR.15	FR.16	FR.17	FR.18	FR.19	FR.20	FR.21
TRANSOM	1200	2400	3600	4800	6000	7200	8400	9600	10800	12000	13200	14400	15600	16800	18000	19200	20400	21100	22300	23500	24700



PLAN VIEW ON HULL