



Principal Particulars

Length overall	27.4	metres
Length waterline	25.2	metres
Moulded beam	8.9	metres
Design draught	1.5	metres

Deadweight

Passengers	12	
Technicians	24	
Fuel	35,000	litres
Fresh water	3,500	litres
Black water	2,500	litres
Maximum deadweight	40.257	tonnes

Performance & Range

Speed	26.0	knots
Service speed	24.0	knots

Machinery

Main engines	2x CAT C32 (1081 kW)
Propulsors	2x FPP

Construction

Superstructure	Resilient Mounted
----------------	-------------------

Design Standard

Class	BV
Flag	United Kingdom

Additional Information

Crane: PK12000
BMT Active Fender System 2
STBD Superstructure Door



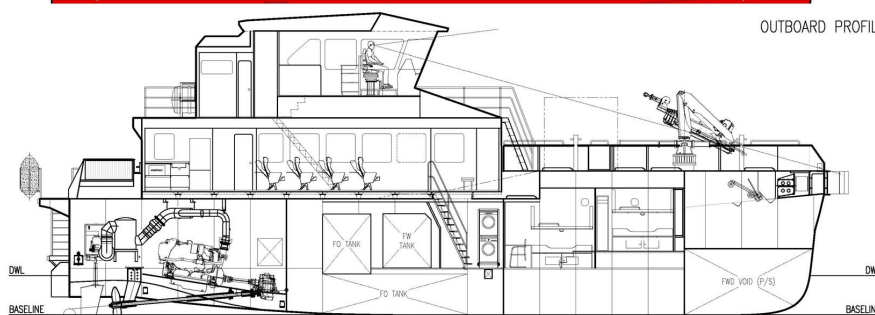
Year launched	Number built	Owner	Project No	Builder
2023	2	Manor Renewables	NG1151	Strategic Marine



OUTBOARD PROFILE



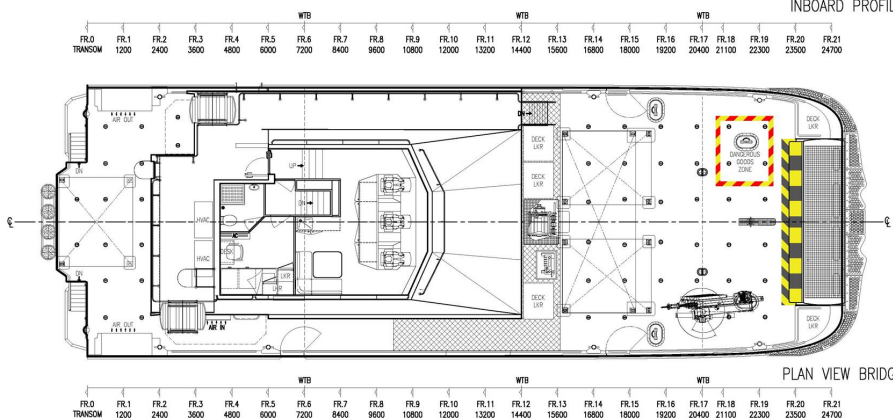
VIEW ON BOW



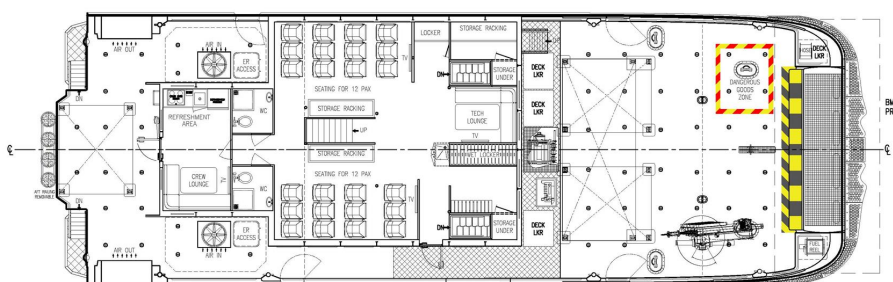
INBOARD PROFILE

FUEL:

FLAG:

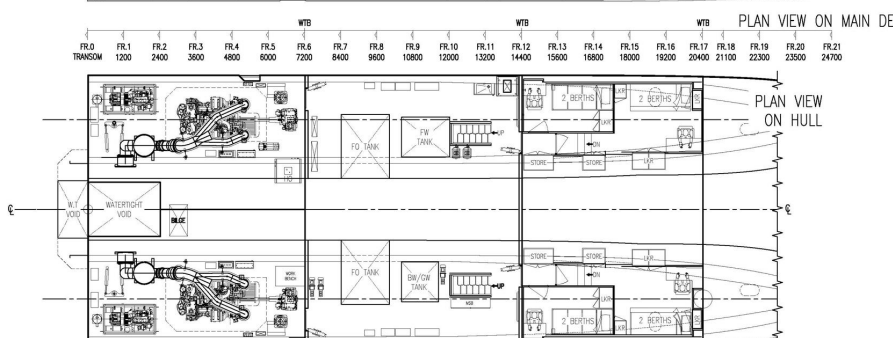


PLAN VIEW BRIDGE



PLAN VIEW ON MAIN DECK

BMT ACTIVE FENDER SYSTEM
PROTECTED BY PATENT No. GB2490252



PLAN VIEW
ON HULL