



Principal Particulars

Length overall	42.5	metres
Length waterline	41.9	metres
Moulded beam	12	metres
Design draught	1.6	metres



Deadweight

Passengers	500	
Vehicles (bicycles)	20	
Crew	4	
Fresh water	1,000	litres
Black water	1,000	litres



Performance & Range

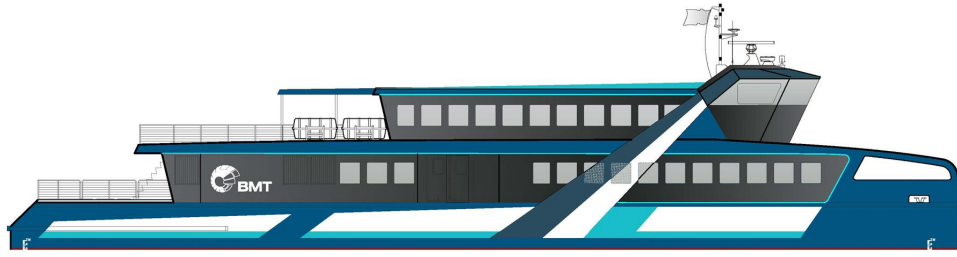
Service speed	18	knots
---------------	----	-------

Machinery

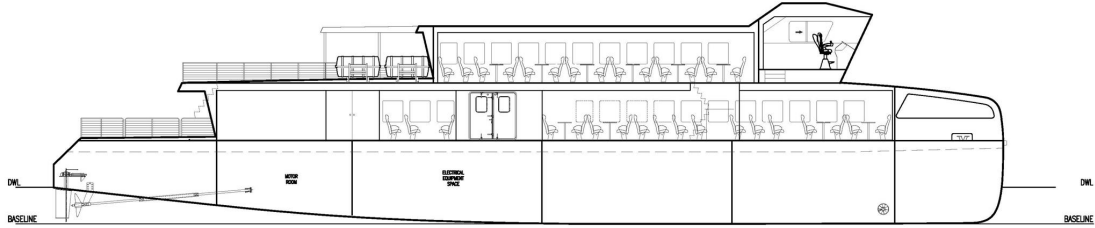
Batteries	2200 kWh
Motors:	2x 770kW

Construction

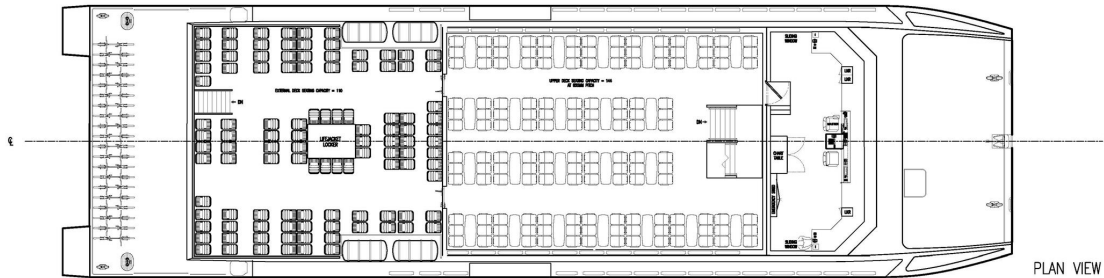
Hull	Aluminium
Superstructure	Aluminium



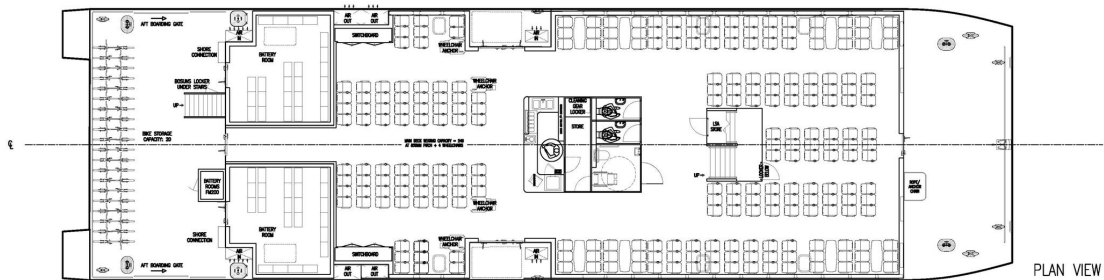
OUTBOARD PROFILE



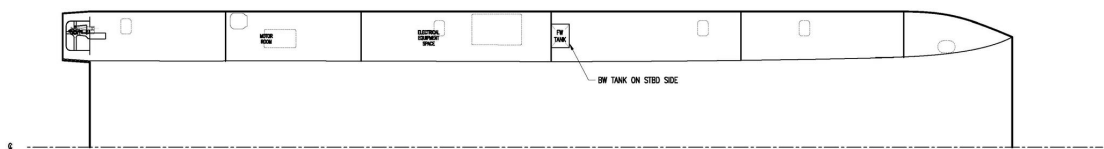
INBOARD PROFILE



PLAN VIEW ON BRIDGE DECK



PLAN VIEW ON MAIN DECK



PLAN VIEW ON HULL