



Principal Particulars

Length overall	49	metres
Length waterline	35.5	metres
Moulded beam	22	metres
Design draught	5.5	metres

Deadweight

Technicians	40	
Crew	16	
Fuel	114,000	litres
Fresh water	28,500	litres
Black water	14,250	litres

Performance & Range

Speed	12	knots
Service speed	10	knots

Machinery

Propulsors	2 x 1,100kW AZIMUTHING PODDED PROPULSORS	
Bow thruster	4 x 22kW	
Generators	4 x 940 kW + 1 x 430 kW	

Design Standard

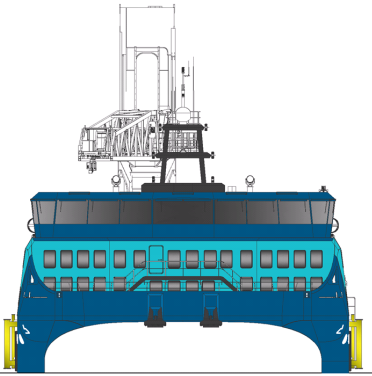
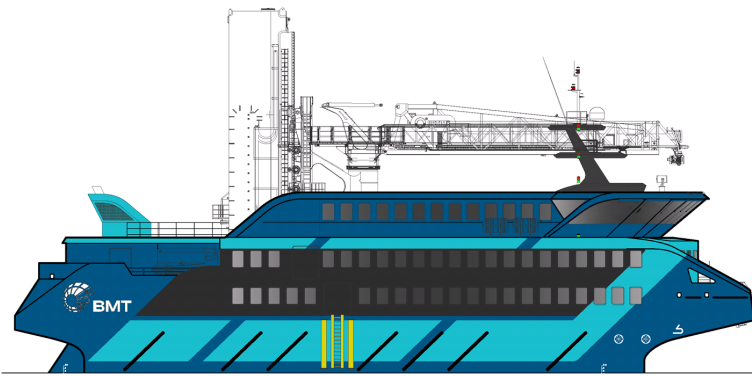
Class	BV
Flag	AUT-UMS, SP56, SDS, DYNAPOS, UNRESTRICTED NAVIGATION, GREEN PASSPORT, CLEANSHIP

Additional Information

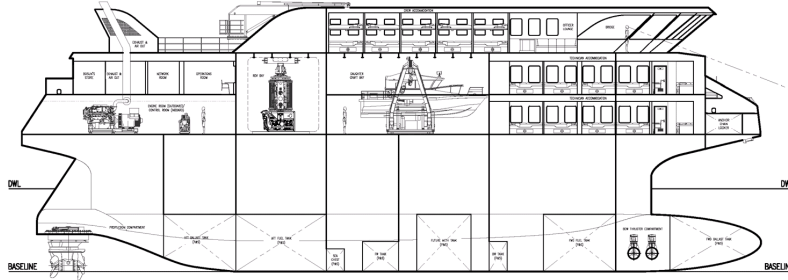
DYNAMIC POSITIONING 2
30m TELESCOPIC GANGWAY
8.5m CREW TRANSFER DAUGHTER CRAFT BAY
ROV BAY

Min Landing Height (angled walkway): 4.6m above waterline
 Max Landing Height (angled walkway): 29.1m above waterline
 Min Landing Height (level walkway): 14.2m above waterline
 Max Landing Height (level walkway): 19.6m above waterline

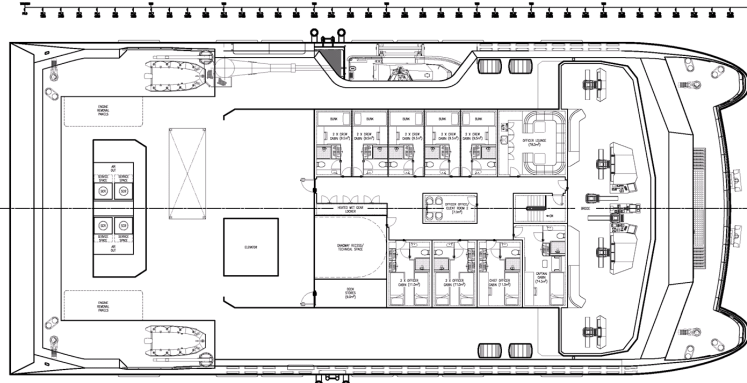




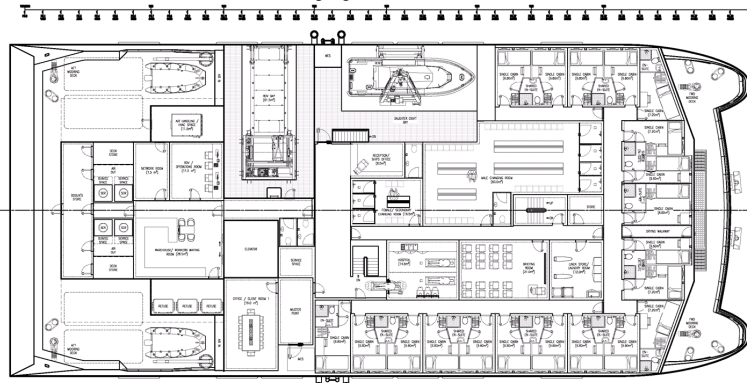
BOW VIEW



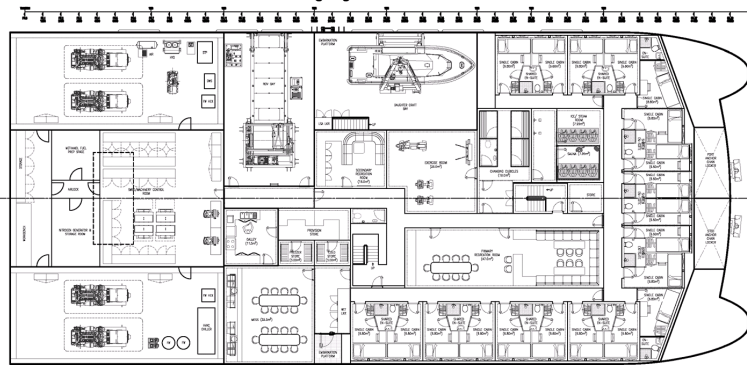
INBOARD PROFILE



BRIDGE DECK



UPPER DECK



MAIN DECK